



FOR CHARTER

C

Unparalleled Family Charter Experience

C is a 54.6m Baglietto superyacht that boasts a high-volume interior, versatile spaces for different age groups, and a fantastic onboard lifestyle. This full-custom masterpiece demands attention in all the right ways.





INTERIOR LIVING

Modern & Luxurious

C's interior design utilises light-coloured woods, brass, lacquered panels, and cool marble alongside calming blue/green tones.

The main saloon is carefully designed to accommodate modern family life and features floor-to-ceiling windows and retracting glass doors that reveal a balcony to one side.

The sophisticated lounge is adorned with bespoke furniture by Italian designers Belvedere, alongside customised Minotti pieces. Every detail has been meticulously curated, from the plush new soft furnishings to the custom-designed carpets. On the upper deck, guests will find another glamorous lounge space with a projector for movie nights.





C MAIN SALON



C MAIN SALON





C UPPER SALON

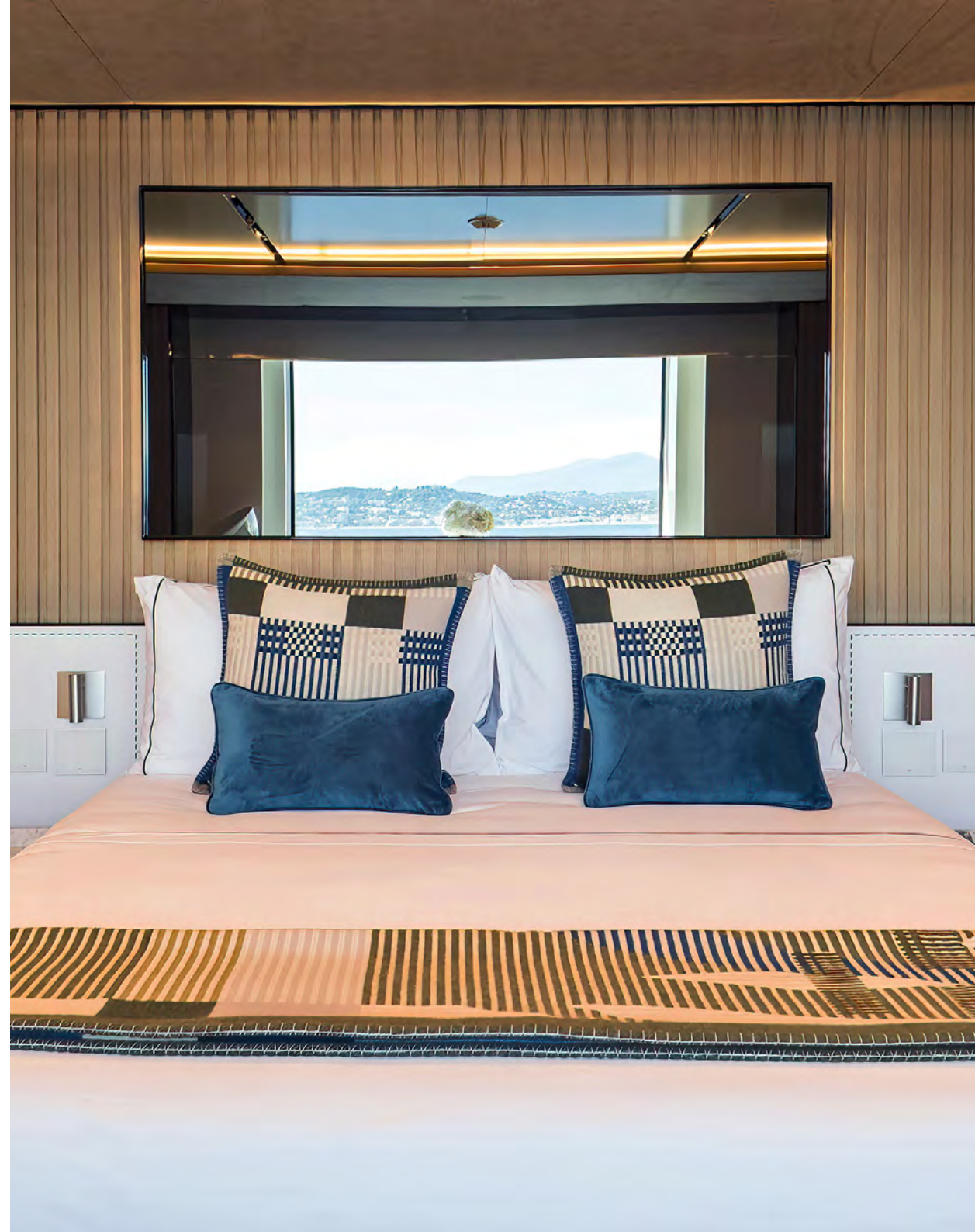


© UPPER SALON

ACCOMMODATION

Relaxed & Stylish

C can comfortably accommodate up to 12 guests across seven suites with incredible flexibility. The yacht has two matching elegant master suites and two VIP suites located on the main deck, and a large double cabin, twin cabin with trundle beds and pullman bunks, and a dedicated playroom/ children's cabin on the lower deck.





C MASTER SUITE



C MASTER SUITE



C MASTER SUITE



C MASTER SUITE



C MASTER SUITE



C VIP SUITE





C VIP SUITE



C VIP SUITE



C DOUBLE CABIN



C TWIN CABIN





© CHILDREN'S CABIN / PLAY ROOM

EXTERIOR LIVING

Your Own Personal Oasis

Guests can expect a totally pampered experience aboard motor yacht C, with 13 crew ready to welcome them aboard.

When it comes to exterior spaces, C has an amazing glass jacuzzi pool on the main deck, two convertible dining tables offering multiple dining arrangements on the upper deck, as well as a circular seating area and second jacuzzi pool on the sundeck.

One of C's standout features is her breezy beach club, open on three sides to allow for maximum airflow and light, it's equipped with chic furnishings for stylish afternoons at the water's edge. The beach club also boasts a well-equipped gym, massage room, and hammam.





C SUNDECK



C SUNDECK





C FORE DECK



C UPPER DECK



C UPPER DECK



C MAIN DECK



C MAIN DECK





C BEACH CLUB

TENDERS & TOYS

What's On Board

Tenders:

- Novamarine BS120 12.5m luxury chase tender
- Survitec 4.50m rescue tender

Gym equipment:

- Peloton Treadmill
- Peloton Bike
- Technogym Kinesis Gym
- Dumbbell Sets
- Fitness Adjustable Bench
- Wellness Balls
- Exercise Mats





TENDERS & TOYS

What's On Board

Toys:

- Sea-Doo GTR-X RS300 (2 person)
- Sea-Doo Wake 170 iDF with sound system (2 person)
- 3x SeaBob F5 SR Cam System with 2 integrated cameras
- 1x Seabob F5
- 2x Lift eFoils
- 4x inflatable stand up paddle boards (two with windsurf set up)
- Oceandreams floating beach (4x2m)
- Oceandreams anti jellyfish pool (4x2m)
- Selection of wakeboards and skis
- Nautiboy Inflatable swim platform extender

TENDERS & TOYS

What's On Board

Towables:

- Jobe chaser banana (4 person)
- Jobe Sea-esta sofa (3 person)
- Jobe kickflip (2 person)
- Jobe crusher donut (1 person)

Snorkelling Equipment:

- 6x Adult sets
- 6x Childrens sets





C

SPECIFICATION

BUILD

Baglietto

YEAR

2021

LENGTH

54.2m (177' 10")

BEAM

10.4m (34' 1")

DRAFT

2.6m (8' 6")

GUESTS

12

CABINS

7

CREW

13

GROSS TONNAGE

901

CRUISING SPEED

12 Knots

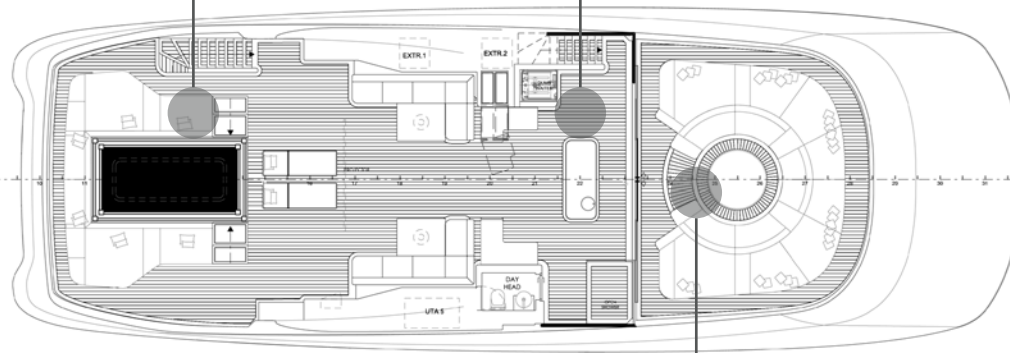


SUNDECK

POOL - EXTERIOR SPACE



EXTERIOR SPACE



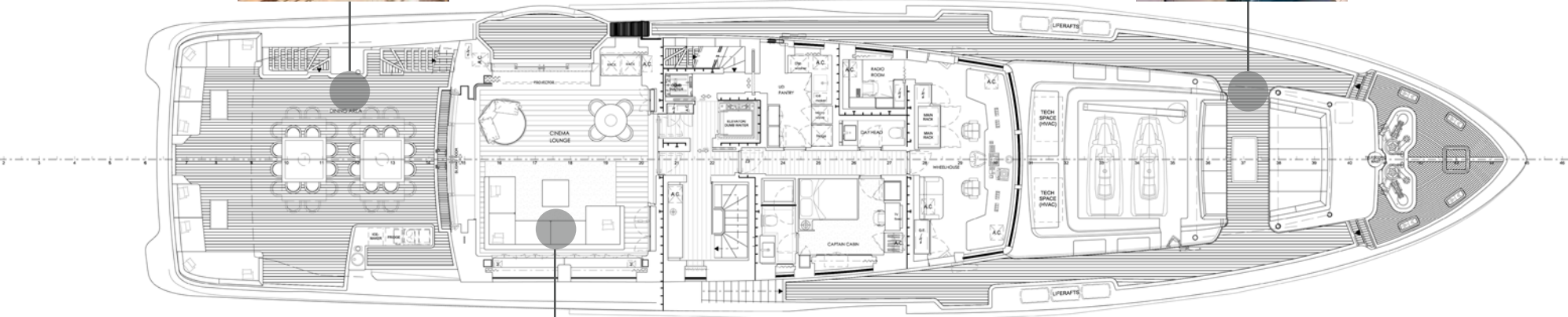
EXTERIOR SPACE

UPPER DECK

EXTERIOR DINING



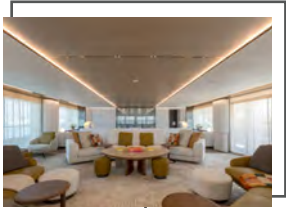
FORE DECK



UPPER SALON

MAIN DECK

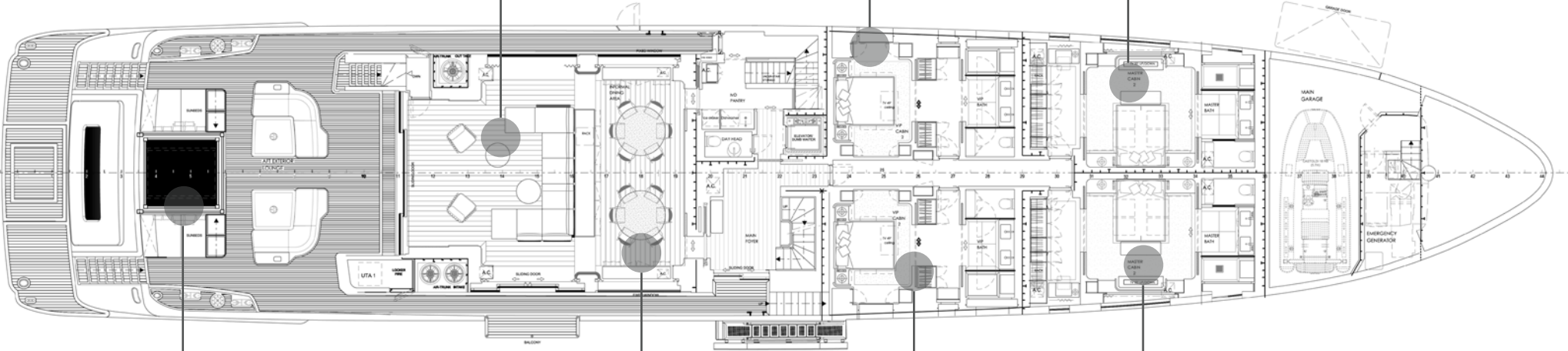
MAIN SALON



VIP SUITE



MASTER SUITE

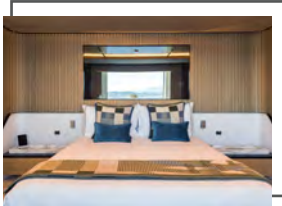


POOL - EXTERIOR SPACE



DINING

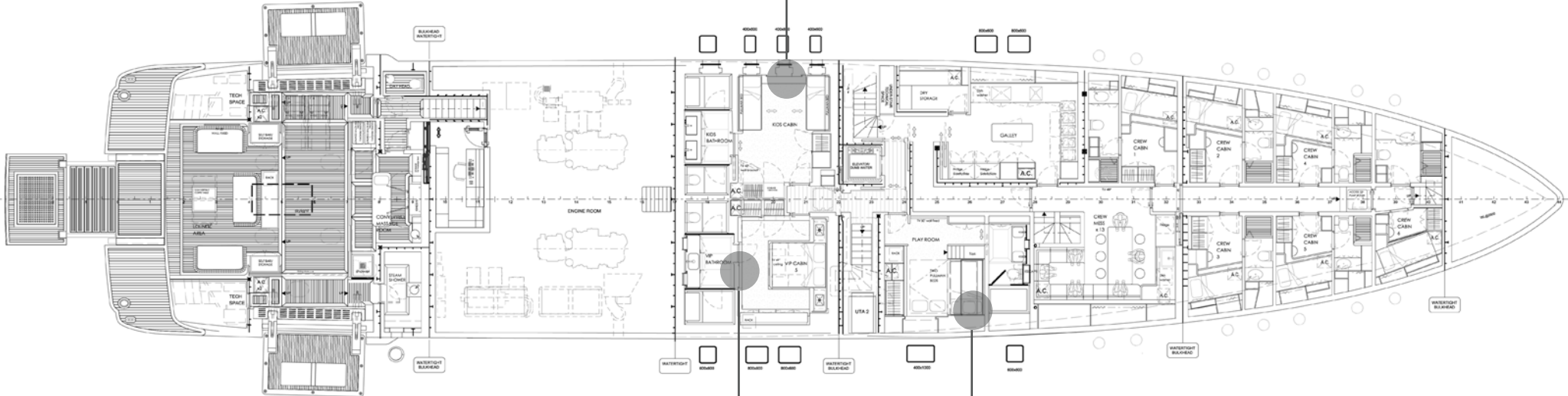
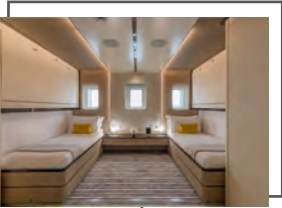
VIP SUITE



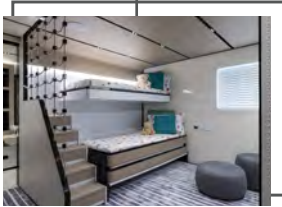
MASTER SUITE

LOWER DECK

TWIN CABIN



DOUBLE CABIN



CHILDREN'S CABIN /
PLAY ROOM



FOR CHARTER