



CHARADE

FOR CHARTER

CHARADE

38.1M | BENETTI | 2018

 LENGTH 38.1m BEAM 8.22m NO. OF GUESTS 10 MAX SPEED 24kts GUEST CABINS 5 RANGE 1750 nm

CHARADE's stand-out contemporary interiors were lovingly crafted by British studio, RWD. Emphasis was placed on creating a serene, yet lush and light interior feel. Very much a calm haven that in no way takes away from her sporty and sharp exterior coined by Stefano Righini.

With stabilisers both at zero-speed and underway, powerful twin MTU engines and an ability to cruise between 17.5 and 22 knots, CHARADE promises a tranquil, smooth passage from location to location, with no compromise on speed.

CHARADE invites you to bask in the inviting embrace of abundant natural light that streams through the expansive floor-to-ceiling windows, enveloping the yacht's main living spaces. Meticulous attention to lighting during the design phase has resulted in the use of elegant slim light panels throughout the yacht's interior. Moreover, the exterior RGB lighting system awaits your command, ready to cast the yacht in a captivating array of colours, setting the perfect mood for your journey.





C H A R A D E

Fresh from a generous 2023 refit, Benetti's 6th hull from their incredibly sought-after Fast 125 series hits the charter market for the first time.

INTERIOR

At the heart of the main salon is a seating area composed of plush, off-white sofas and armchairs, all of which are adorned with decorative cushions that introduce accents of navy blue, complementing the maritime surroundings. The upholstery is of a high-quality textured fabric, chosen for both comfort and durability. A sleek, white lacquer coffee table sits at the centre, reflective and modern, contributing to the interior's luminous feel.

Moving through the main deck, a bespoke steel and glass aerial stairway crafted by RWD, complete with backlit stone step tops, leads to the cosy sky lounge on the upper deck. Calling all technology-buffs, CHARADE boasts high speed starlink internet, IPTV in the sky lounge, airplay and Apple TV with all streaming services available at the touch of a button.

For those who appreciate dining and relaxation with breath-taking views, the yacht boasts multiple al fresco dining and lounge areas. Whilst in the main salon, CHARADE offers a sheltered interior dining for up to 10 guests, upper deck aft you can find a large round table, which can be serviced by an exterior counter, sink and fridge. Finally, her sundeck welcomes a much more laid-back opportunity with plush duck-egg blue sofas and expandable tables.

INTERIOR CONTINUED

CHARADE offers comfortable accommodation for up to 10 guests across five beautifully appointed cabins. The highlight is the expansive full-beam owner's suite, featuring a generous walk-in wardrobe, and a bathroom featuring both his and her sinks. Below deck, you'll discover two elegant VIP double cabins and two charming twin cabins, ensuring a restful and enjoyable stay for all. All cabins continue the interior selection of soft blue and violet tones, against a base of ecru and beige which means the lower deck feels just as light and airy as the upper decks. Each bathroom offers Molton Brown toiletries.

EXTERIOR

For those looking for a dip in the ocean, CHARADE offers a convenient fold-down transom, which transforms into an open-air beach club, creating a seamless connection between guests and the water.

Alternatively, guests are welcome to use the Jacuzzi on the foredeck, making an excellent use of space on the bow, typically unused in other models of the Fast 125 series.

CHARADE is perfectly positioned to cruise the Western Mediterranean at leisure, be it the azure waters of Capri or the glamorously vibrant Saint Tropez.











SUN DECK





















MAIN DECK AFT STAIRWAY





MAIN DECK SALON







MAIN DECK STAIRWAY



MAIN DECK FULL BEAM MASTER CABIN



MAIN DECK FULL BEAM MASTER CABIN





MAIN DECK FULL BEAM MASTER CABIN DRESSING





LOWER DECK STAIRWAY















LOWER DECK TWIN CABIN 1





LOWER DECK TWIN CABIN 2



LOWER DECK TWIN CABIN 2 BATHROOM



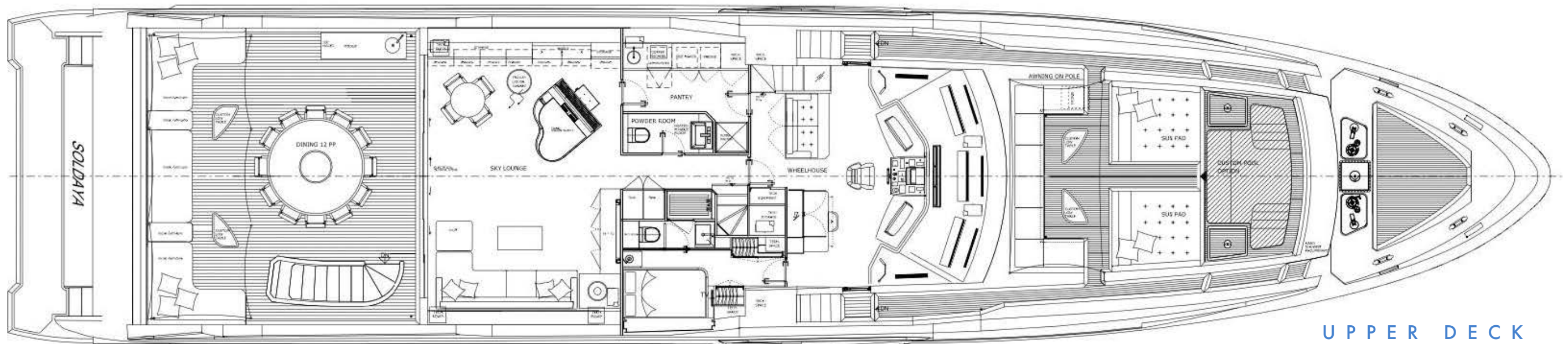
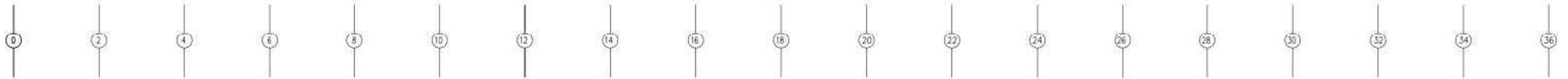
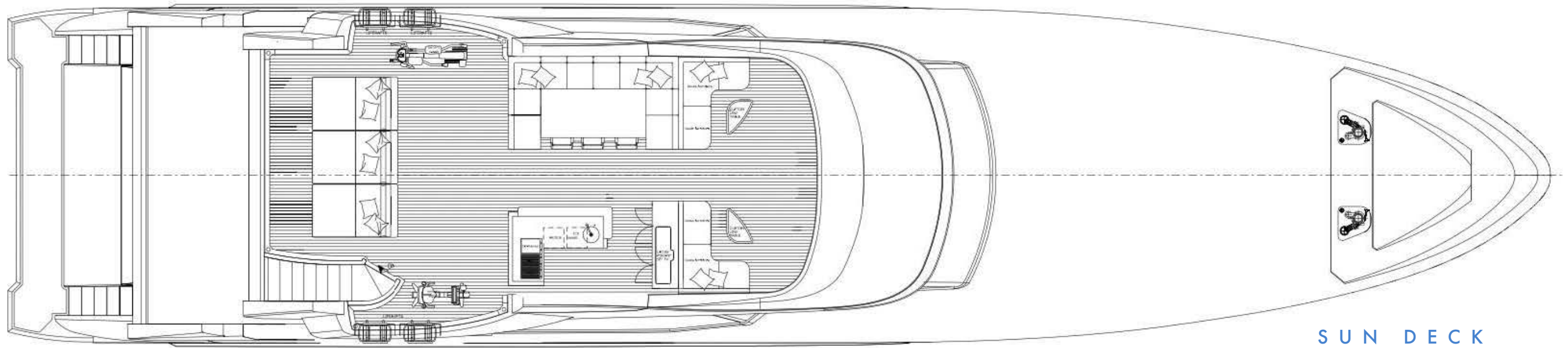
T E N D E R S A N D T O Y S

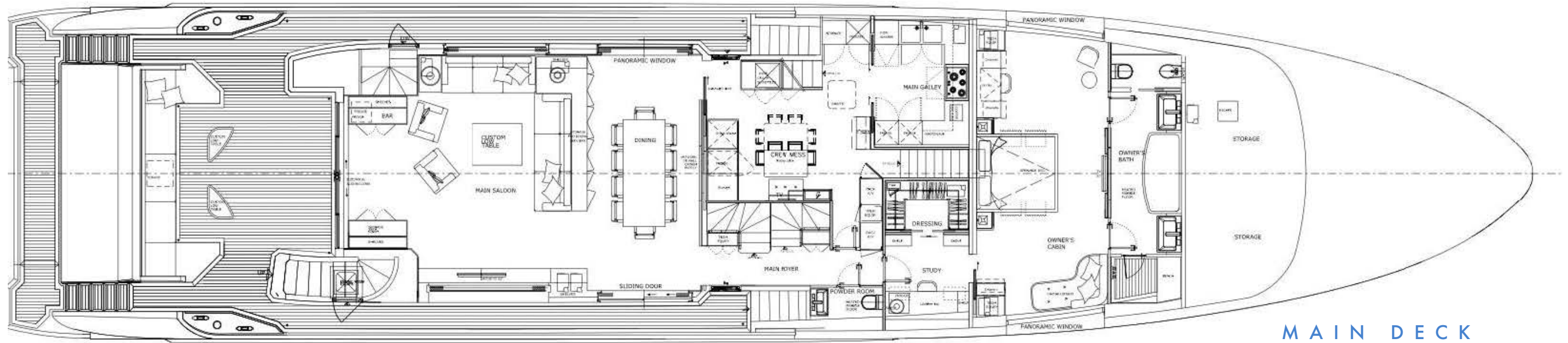
- Williams 565 Dieseljet Tender
- 2 x Seadoo Spark Jetskis (guests must have appropriate licence)
- 4 x Sea bobs
- Water skis for adults and kids
- Wakeboards for adults and kids
- Inflatable tow sofa
- 2 x Paddle boards
- 1 x E-flight



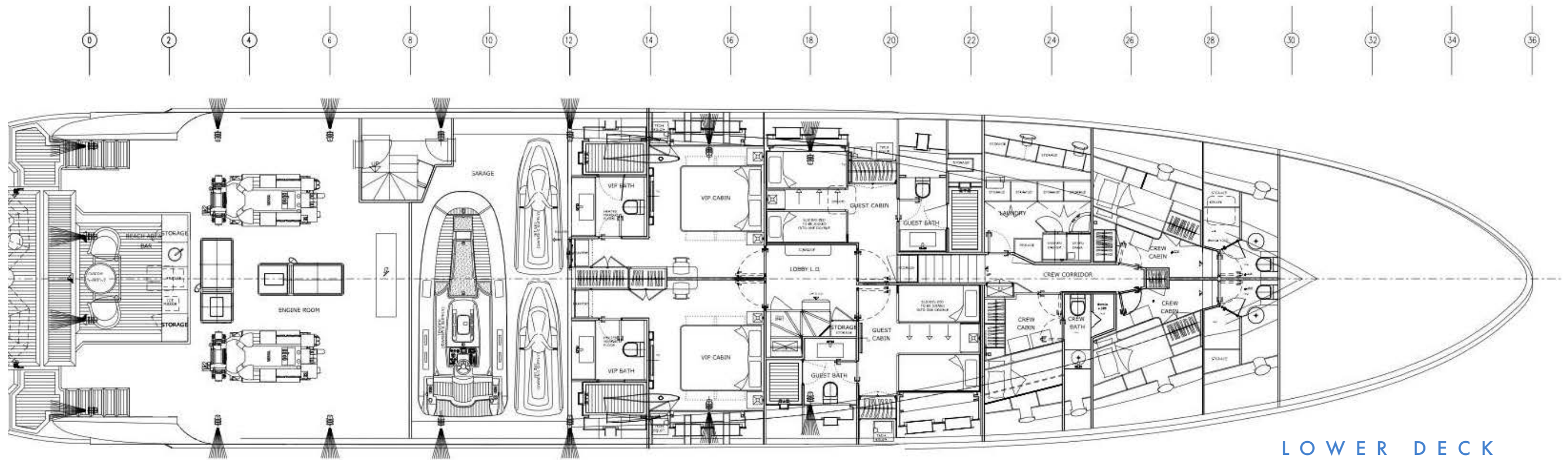








MAIN DECK



LOWER DECK

DISCLAIMER While every effort has been made to ensure that the information contained within this presentation is as up-to-date and accurate as possible at the time of going to press, this cannot be guaranteed. All rights reserved. No part of this publication may be reproduced or used in any form without prior written permission.