



LA PELLEGRINA 1

EXCLUSIVELY FOR CHARTER

LA PELLEGRINA 1

The perfect way to discover the beauty of Greece

La Pellegrina 1 was built in 2012 by the renowned French shipyard - Chantier Naval Couach. La Pellegrina 1's sturdy and unyielding exterior is complemented by a luxurious interior designed done this year by A.M.P. Interiors.

Recent works and upgrades have brought La Pellegrina 1 in line with some of the finest yachts available for charter. Along with various mechanical enhancements, new carpets have been fitted throughout the main deck and upper deck, new fabrics adorn the saloon and dining area, there are now smart screen televisions in the guest cabins, and a central Creston control system for lights and audiovisual amenities. On deck, the exterior furniture has been repainted, the cushions and upholstery replaced, and new teak decks run on the main deck aft.





INTERIOR LIVING

Chic & Contemporary

Natural light floods in through the floor-to-ceiling windows in the open-plan saloon, guiding your eyes to the yacht's elegant and impeccable furnishings. The bright space is chic and contemporary, and leads to a formal dining area.

Following the recent interior refreshment a new artwork selection has been made, complemented by some custom made for the yacht.





LA PELLEGRINA 1 MAIN SALOON



LA PELLEGRINA 1 MAIN SALOON



LA PELLEGRINA 1 DINING

ACCOMMODATION

Unique & Spacious

The opulence of this 50m motor yacht is further highlighted in the six cabins accommodating up to 12 guests. All cabins have their own entertainment centre and the finest marble in each en suite bathroom. Not to mention the master suite on the bridge deck, with its own private deck space and gym equipment, and the VIP suite located on the main deck forward, providing a 180-degree sea view.





LA PELLEGRINA 1 VIP CABIN



LA PELLEGRINA 1 MASTER CABIN



LA PELLEGRINA 1 MASTER CABIN



LA PELLEGRINA 1 DOUBLE CABIN



LA PELLEGRINA 1 GUEST CABINS

EXTERIOR LIVING

Refreshing Splash

La Pellegrina 1's outdoor areas also have noteworthy features that make her stand out in the charter market. An outdoor dining and entertaining area can be found on the sheltered, expansive aft deck. More al fresco dining can be enjoyed on the sundeck where there are three settees, or take in some rays on the comfortable sunbeds after a refreshing splash in the spa Jacuzzi.

La Pellegrina 1's hull was constructed using a Kevlar Carbon infusion process, giving her a strong, robust aesthetic along with a transatlantic range.

This is a pedigree yacht equipped with everything you need during a charter. She is the perfect platform to discover the beauty of Greece and its surrounding islands.





LA PELLEGRINA 1 UPPER DECK



LA PELLEGRINA 1 SUNDECK



LA PELLEGRINA 1 SUNDECK



LA PELLEGRINA 1 MAIN DECK





LA PELLEGRINA 1 MAIN DECK

TENDERS & TOYS

What's On Board

TENDER:

- 18' (5.4m) Novurania Equator EQR 600

WATER TOYS:

- 2x SEADOO SPARKS 90Cv (2020)
- 2x KNEE BOARDS
- 2x WAKEBOARDS
- 3x WATER SKIS
- 2x F5S SEA BOBS
- 2x 10ft JOBE SUPS (2020)
- 3 SEATER JOBE BANANA (2020)
- Inflatable 2 persons sofa
- Fishing Equipment
- 3x Jobe Infinity Seascooters
- Extension inflatable deck
- BBQ Set up
- Beach Set up









LA PELLEGRINA 1

SPECIFICATION

BUILD

Couach Yachts

YEAR

2012 (2024)

LENGTH

50m (164' 1")

BEAM

9.30m (30" 6')

DRAFT

2.50m (8" 2')

GUESTS

12

CABINS

6

CREW

10

GROSS TONNAGE

498

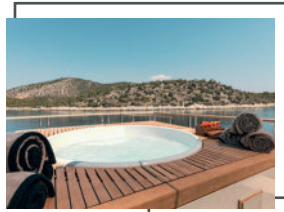
CRUISING SPEED

16 Knots

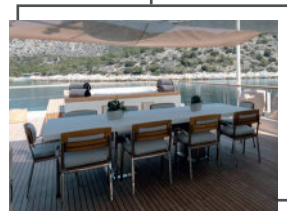
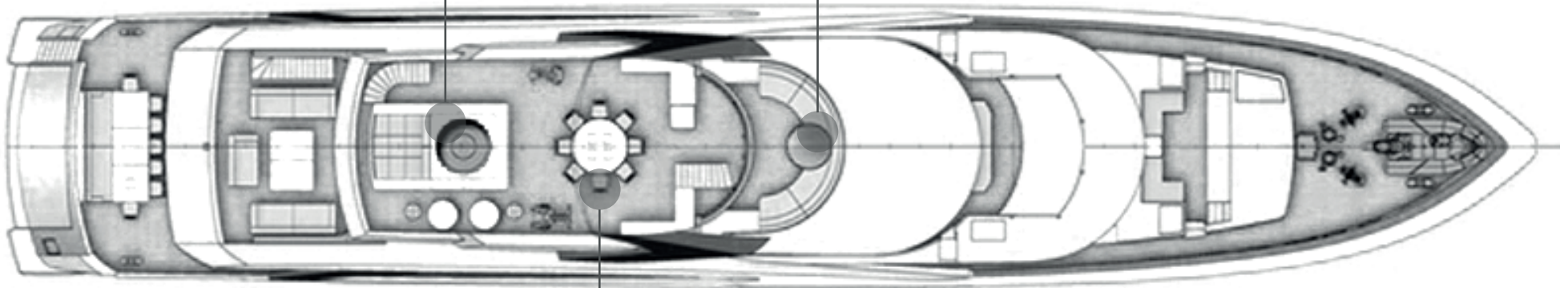
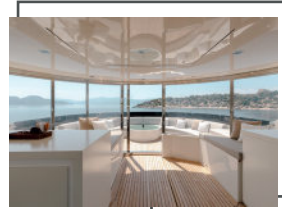


SUNDECK

JACUZZI



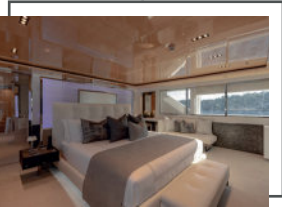
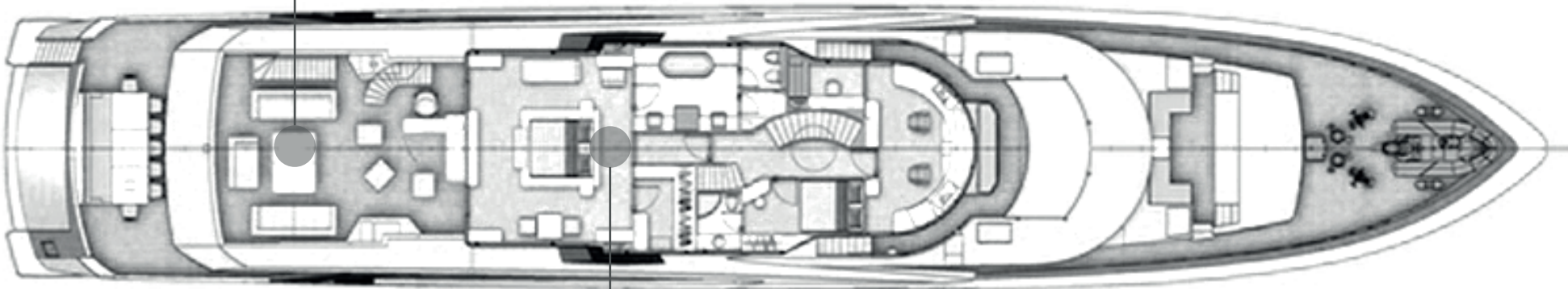
EXTERIOR SPACE



EXTERIOR DINING SPACE

UPPER DECK

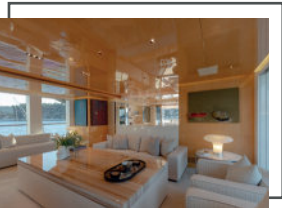
EXTERIOR LOUNGE AREA



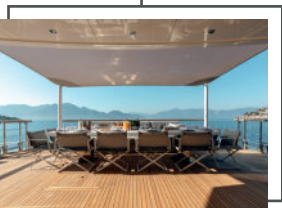
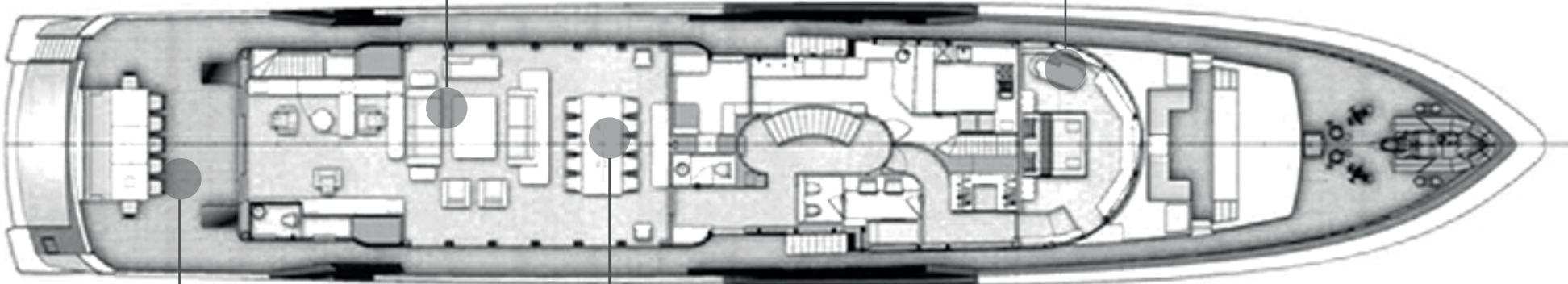
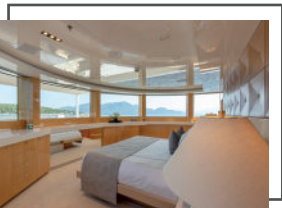
MASTER CABIN

MAIN DECK

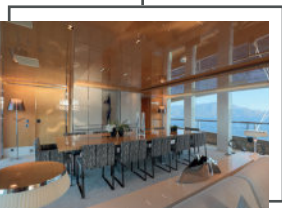
MAIN SALOON



VIP CABIN



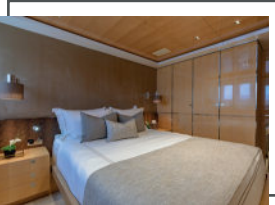
EXTERIOR SPACE/DINING



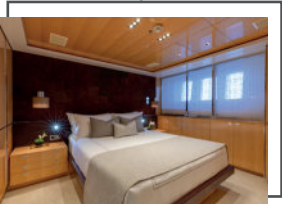
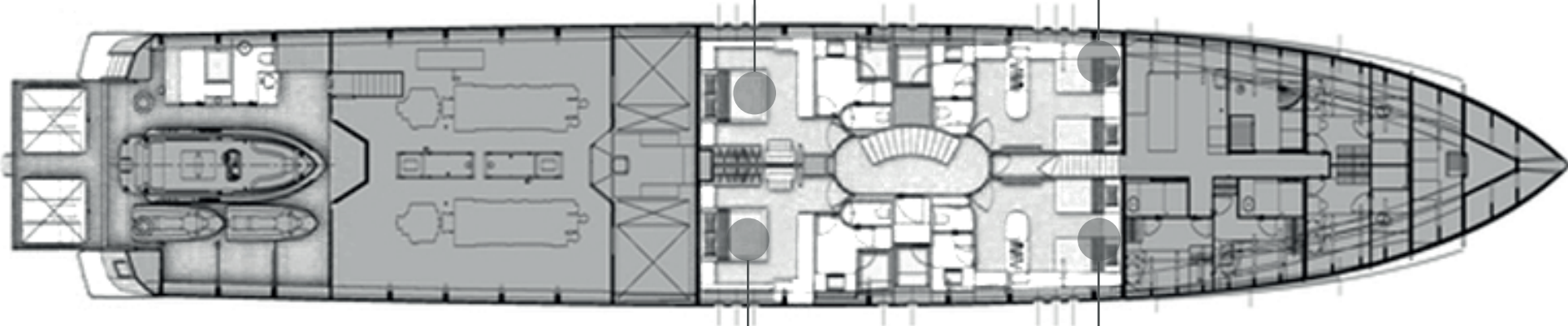
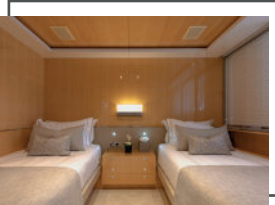
DINING

LOWER DECK

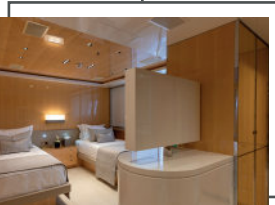
DOUBLE CABIN



TWIN CABIN



DOUBLE CABIN



TWIN CABIN





LA PELLEGRINA 1

EXCLUSIVELY FOR CHARTER