



DB9

171' 10" (52.36m) | Palmer Johnson | 2010

DB9

BASIC SPECIFICATIONS

BUILDER

Palmer Johnson

BEAM (ft/m)

28' 7" (8.7m)

CRUISING/MAX SPEED

22 / 30 Knots

CREW

11

RANGE

3400 nm

LENGTH (ft/m)

171' 10" (52.36m)

DRAFT (ft/m)

5' 3" (1.6m)

FUEL CONSUMPTION

830 Litres/Hr

ACCOMMODATION

10 guests in 5 cabins

INTERIOR DESIGNER

Nuvolari Lenard

BUILT/REFIT

2010 / 2025

GROSS TONNAGE

495 GT

ENGINES

2 x MTU 4613 hp

ARRANGEMENTS

5

DB9

KEY FEATURES

- › STABILIZERS AT ANCHOR AND UNDERWAY.
- › STUNNING HEAD TURNING PROFILE.
- › EXPANSIVE OPEN MAIN SALON WITH ELEGANT CONTEMPORARY INTERIOR AND LARGE WINDOWS ALLOWING NATURAL LIGHT TO FLOOD IN.
- › SPECTACULAR BACK LIT WHITE QUARTZ BAR IS ENHANCED BY VAULTED CEILING AND 3 TIERED CRYSTAL CHANDELIER.
- › THREE SEPARATE POOL AREAS WITH STRIKING 8M SWIMMING POOL ON BOW PLUS 2 JACUZZI'S LOCATED AFT AND ON SUNDECK.
- › SUNDECK FEATURES AN OPEN AIR CINEMA AND JACUZZI.
- › OPEN AFT DECK WITH AIR CONDITIONING TO KEEP GUESTS COMFORTABLE.
- › PROFESSIONAL ATTENTIVE CREW.

DB9

WATER TOYS

- › 6.4M/21' CASTOLDI JET TENDER
- › 4 X PADDLE BOARDS
- › WATERSKIS
- › SELECTION OF TOWABLES
- › 2 X SEA DOO 300 GTX LIMITED JET SKIS
- › INFLATABLE KAYAK
- › WAKEBOARDS
- › JELLY FISH POOL
- › 2 X FS SEABOBS
- › LIFT E-FOIL
- › KNEEBOARDS





DB9







DB9



DB9







DB9









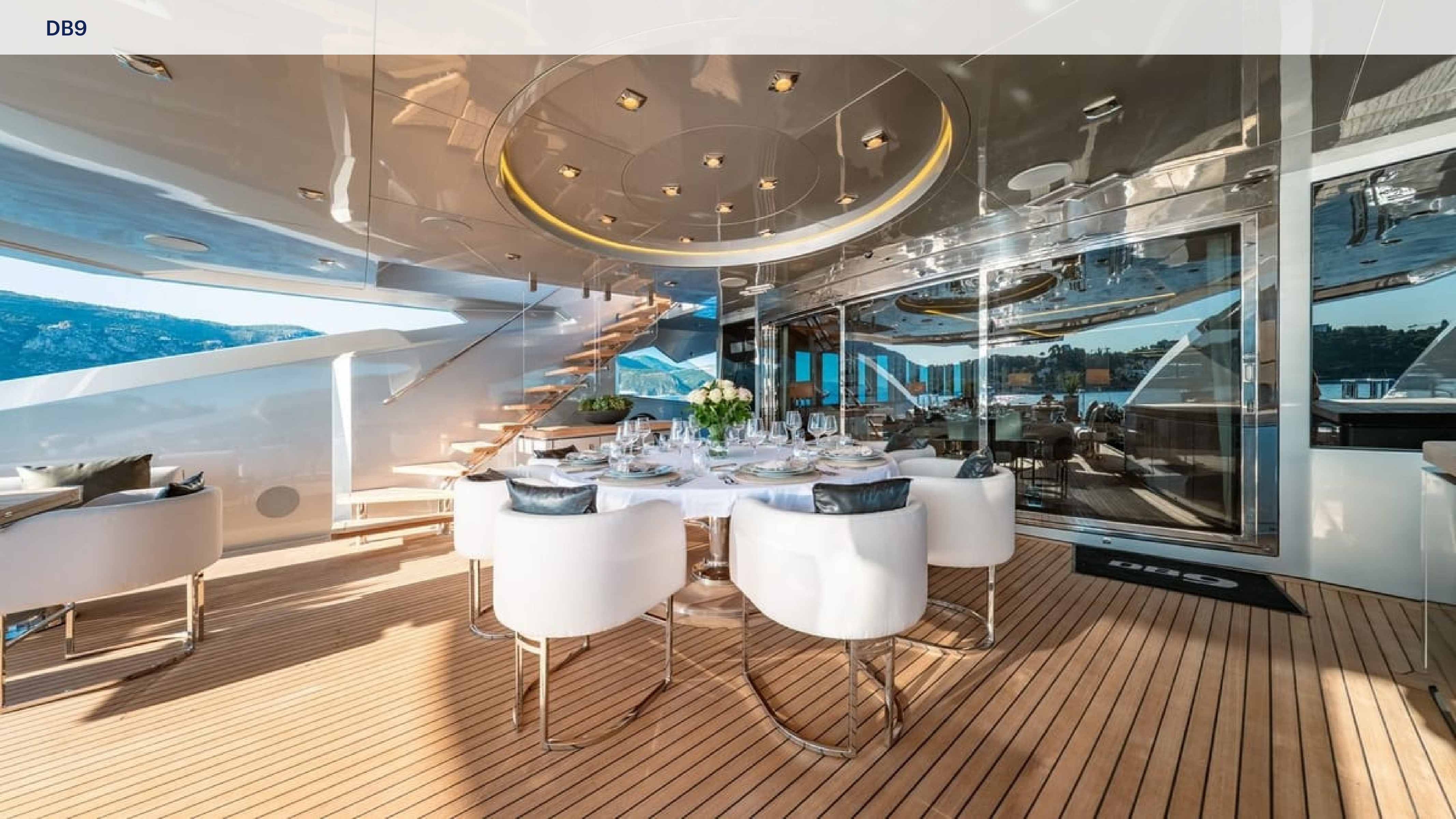


DB9









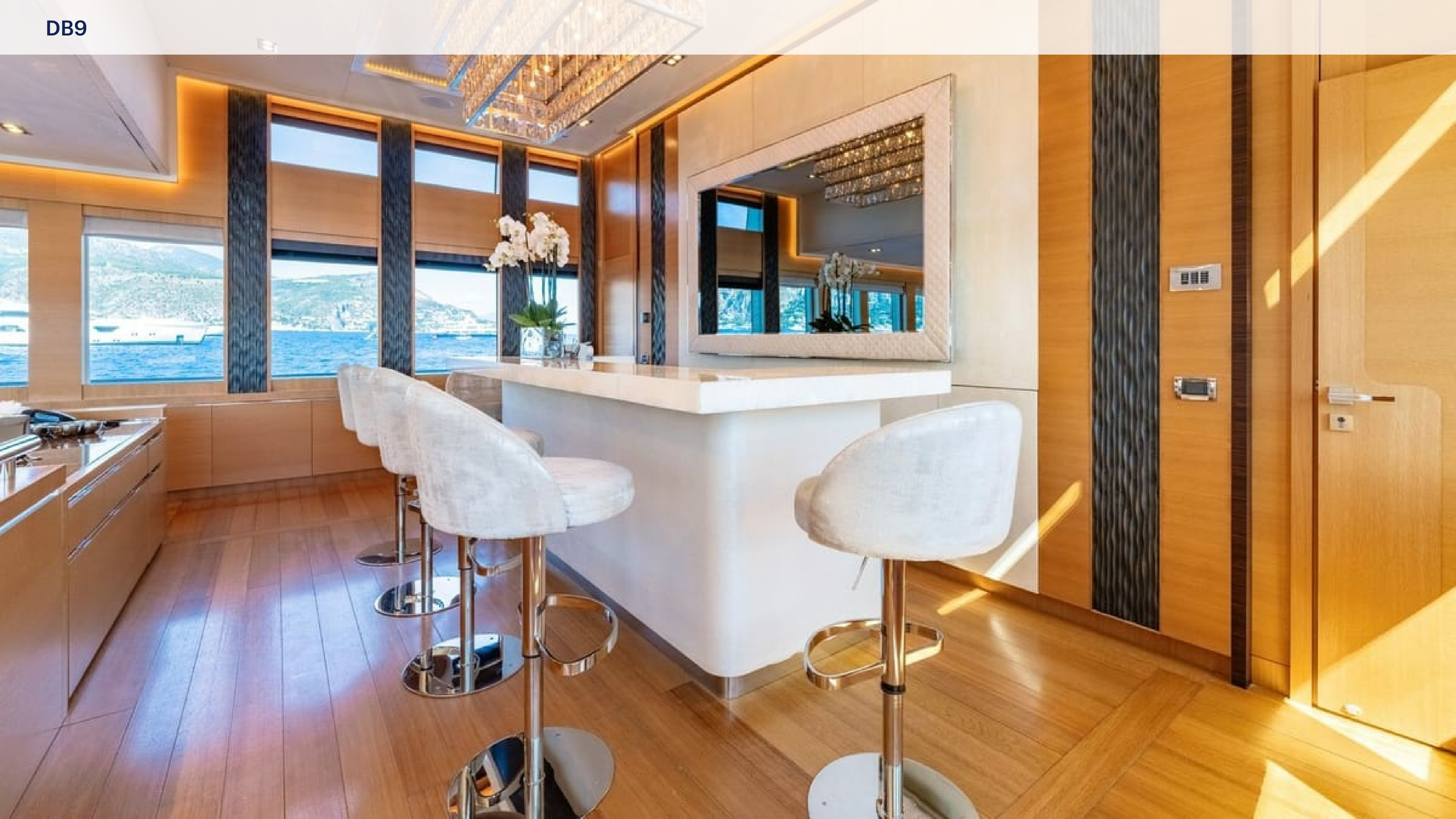


















DB9

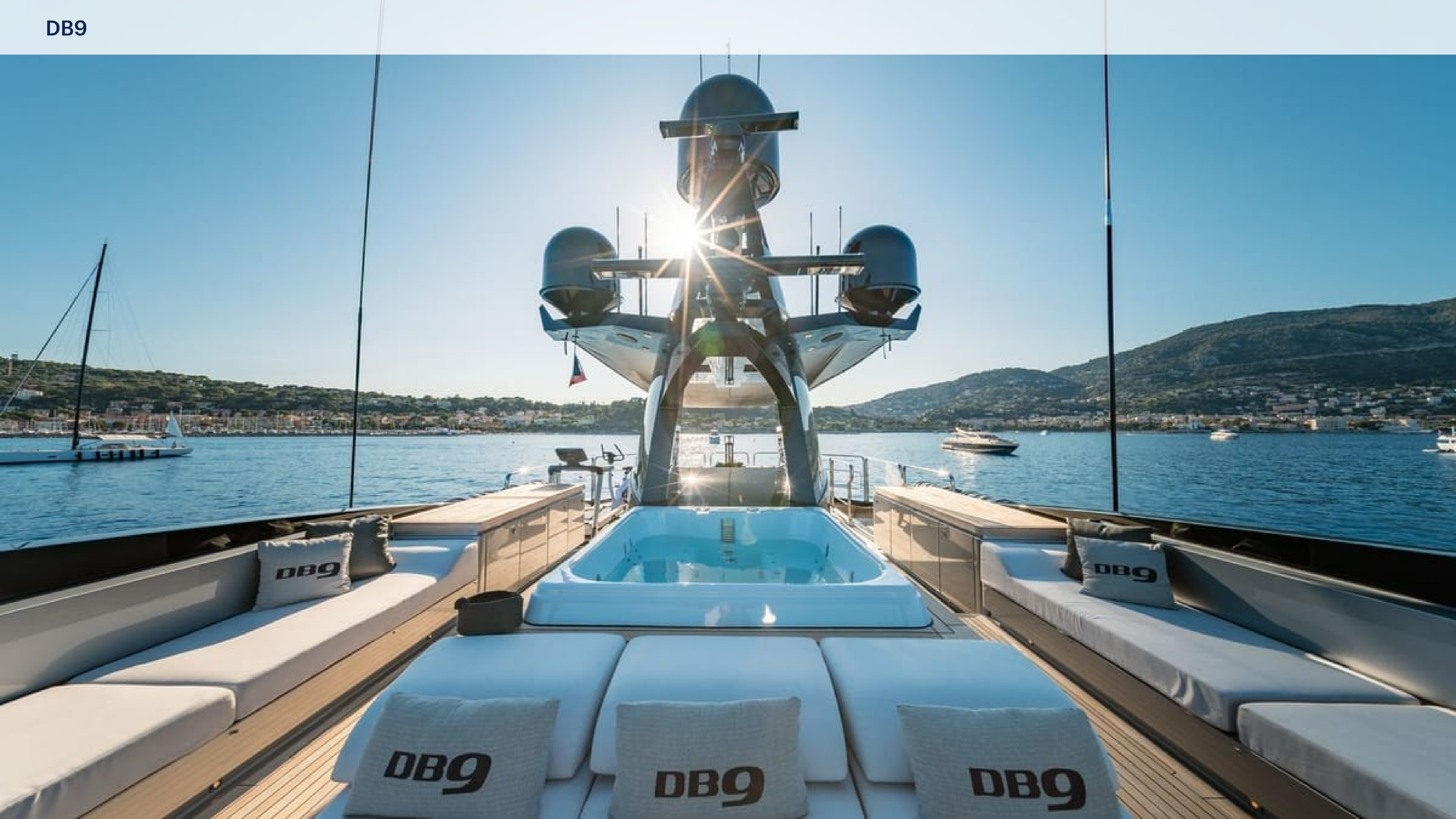


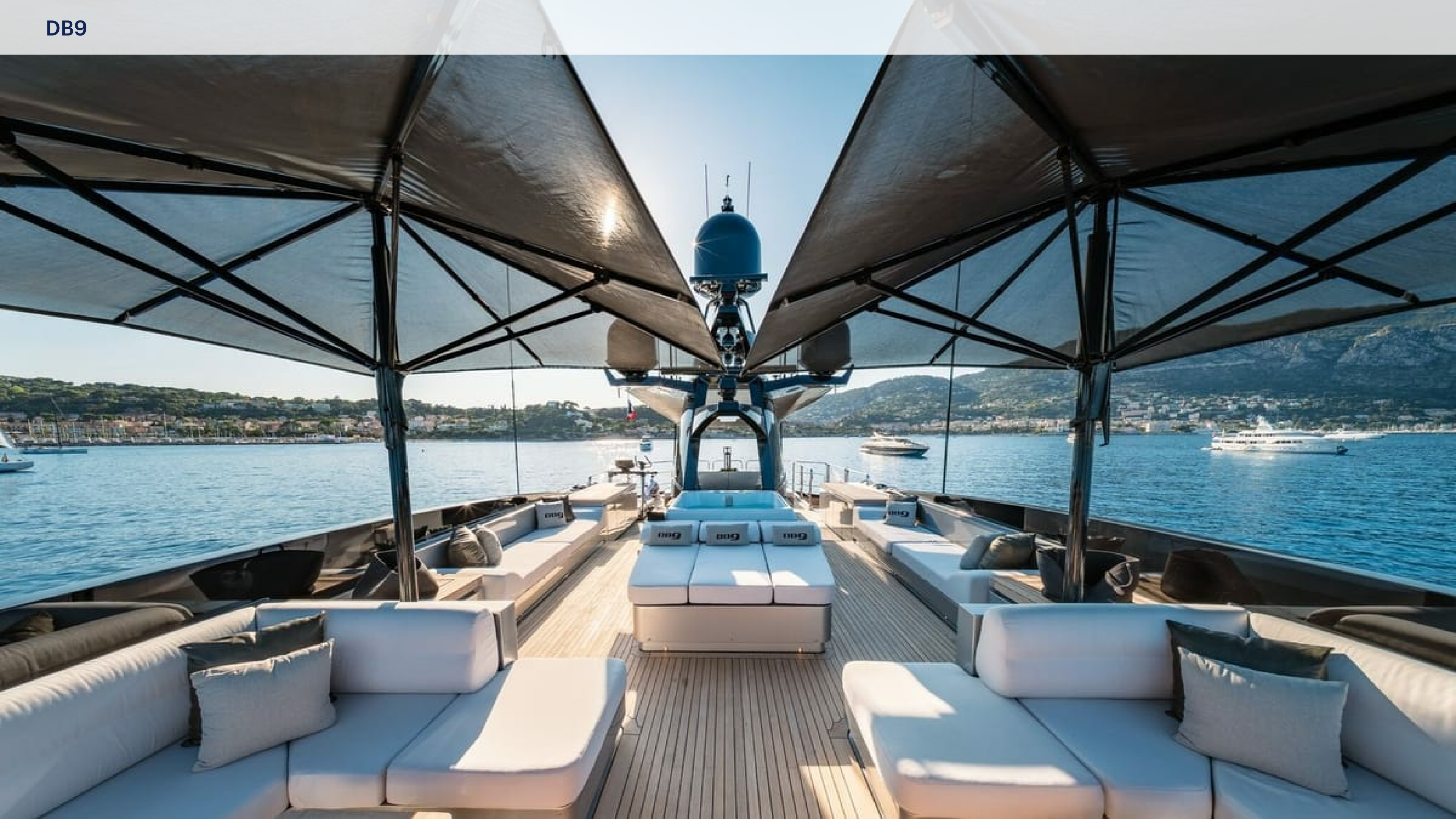


DB9



DB9





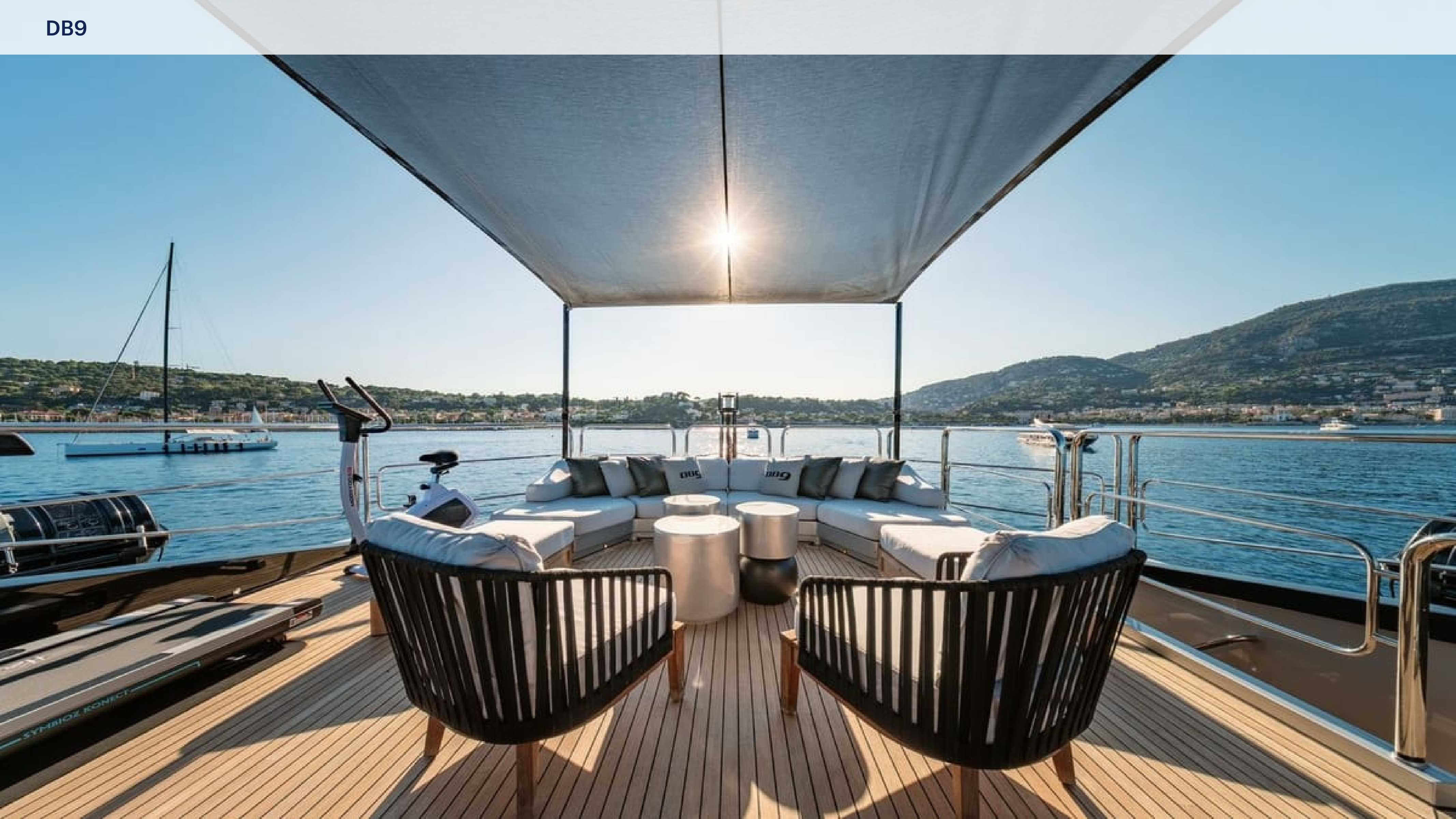
DB9



DB9





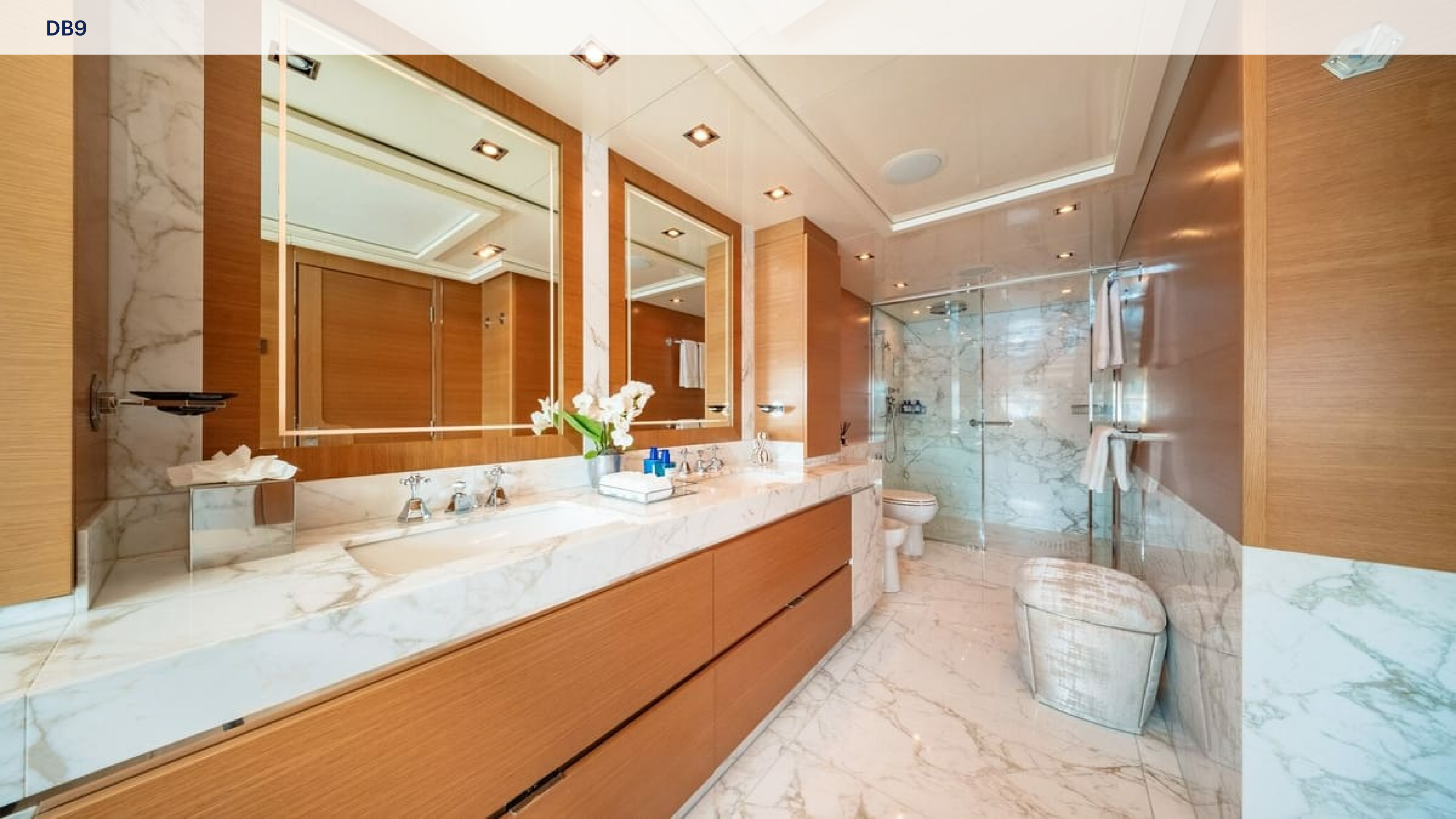




































DB9



DB9





DB9









DB9









DB9



DB9





