



FLYING FOX

CONTENT

Introduction	6
Lower deck	30
Main deck	52
Bridge deck	76
Upper deck	114
Sun deck	136
Roof deck	150
General Arrangement	160
Specification	162





INTRODUCTION

FLYING FOX was completed in March, 2019, by the renowned German shipyard Lürssen in Bremen. Founded in 1875, the Lürssen yard draws on a long history of building many of the world's finest yachts. Measuring 136m she is one of the largest yachts in the world and has achieved her own distinction through her innovative, bold and curvy design by award winning Espen Øino.





At 136 metres in length and
PYC compliant, her 22.5 m
wide beam boasts a massive volume
and ensures a comfortable living
space together with a unique design of
both exterior and interior. The yacht's
proportions are well balanced, allowing
for expansive exterior decks and
more intimate formal areas. Cutaway
bulwarks on the bridge deck and upper
deck allow plenty of natural light to
flood in through the floor-to-ceiling
windows.



FLYING FOX

FLYING FOX is built with a steel hull and an aluminium superstructure. The shapely curves proved an enormous, yet satisfying, challenge for the welders. Perhaps even more amazing is her performance: FLYING FOX is capable of 20 knots flat, with a cruising speed of 15 knots.











FLYING FOX



Like a mirror – the perfectly varnished outer skin of the hull reflects the white foam pattern of the water below. On each side of the bridge deck, a lifeboat is hidden behind the grid so the harmony of the outer lines are not disturbed. In order to launch the boat, a 1.2 ton piece of the bulwark swings up and the lifeboat, hanging under two beam cranes, can move out.



conic form – the outwardly curved side decks make the hull wider and offer a better view ahead.



LOWER DECK





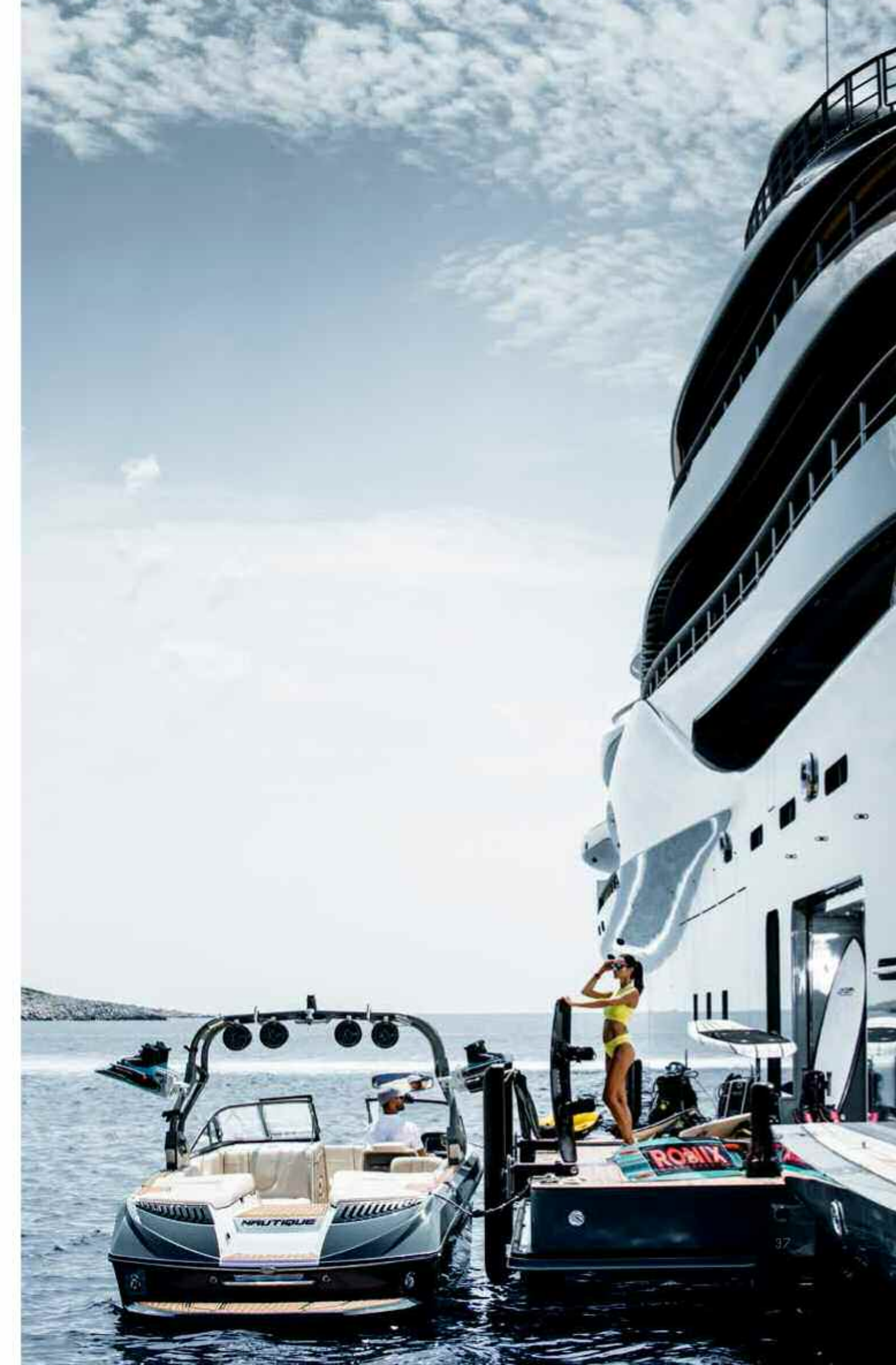
Thanks to the bow and stern thruster, FLYING FOX can turn on a sixpence. The relaxation lounge area on starboard has its own fold-down balcony.




WATER SPORTS



All platforms are integral parts of the aft beach club, which occupies the entire area aft of the tender garage and is well provided with more wellbeing facilities. From here there is direct access leading to the stern bathing platform.





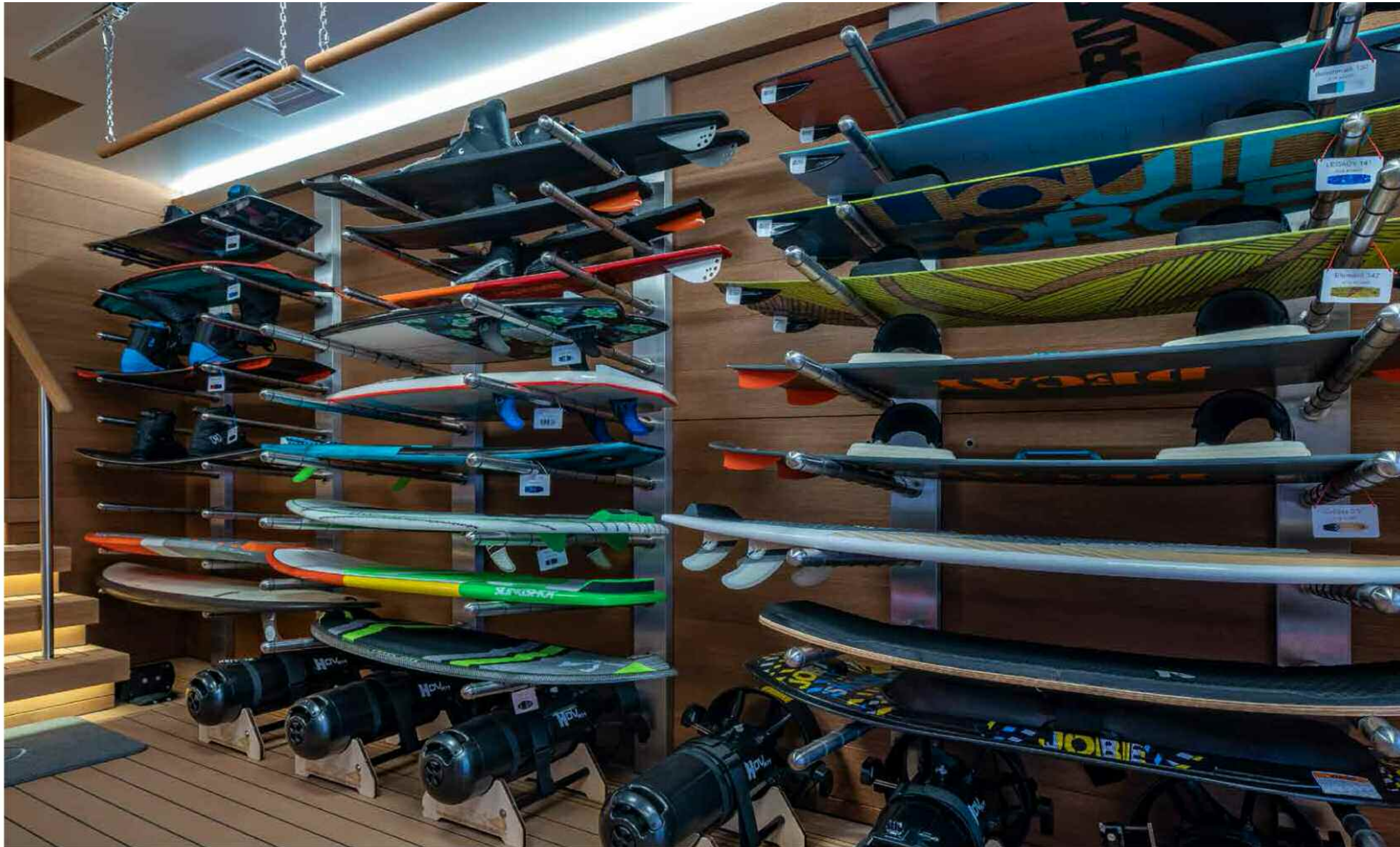
At anchor – the sea terrace enables easy water access for a huge range of water sport activities. A large selection of water sports equipment and matching tenders is available.

KITE & DIVE STORE

Only the best for water sports enthusiasts – the dive store with compressor pumps and its own folding platform as a starting point for underwater adventures. For experienced divers a professional double lock decompression chamber IHC1600mm with three places is available, which is considered among the best available today.

A great variation of diving suits and even the latest generation of underwater cameras is offered - everything is of the highest available quality.





A surfers and divers paradise that leaves absolutely nothing to be desired - a kite store with a ceiling tracking system for the ultimate in water sports equipment. Guests will find a huge selection of surfboards with all sorts of kites and equipment, as well as wake boards, stand-up paddling, sea-bobs, kayaks and much more. The water world is waiting....





T rue luxury - enjoy the evening sun on the stern bathing platform.





SEA LOUNGE

For those taking a break from the sun, or relaxing after a sauna session, the pool of the Sea Lounge awaits.

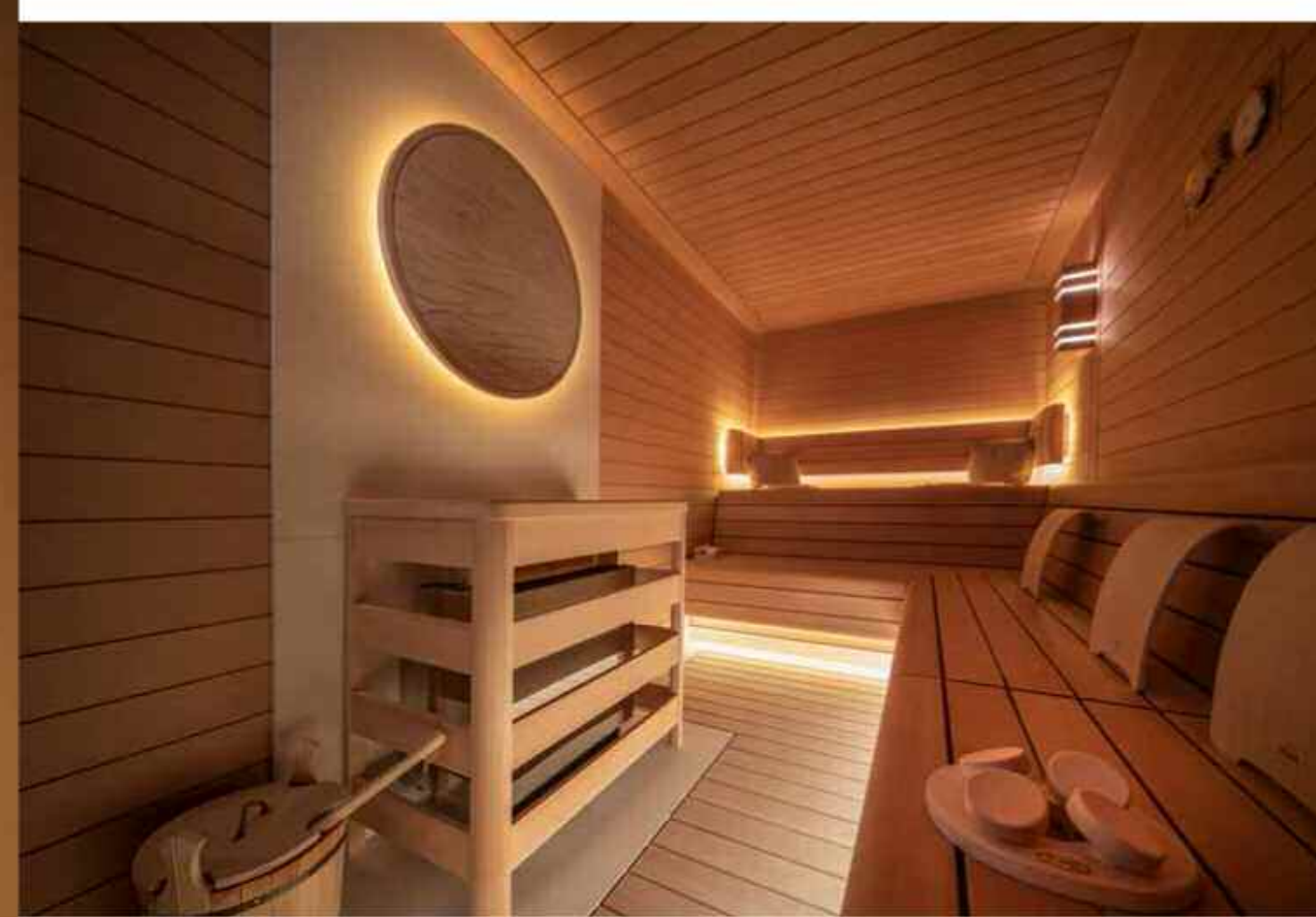
Comfortable sofas invite you to chill and talk in small groups.



This intimate pool on the lower deck allows you to choose your ambience thanks to a sliding glass roof.

Stairs flanked by sofas and evergreen plants lead to the stern bathing platform.





HAMMAM & SAUNA

Recover after the exhilaration of water sports, or start your day the best way possible with this perfect hammam, Finnish sauna, cryo sauna, and relaxation area with its own sea terrace.



MAIN DECK



GEORGE TOWN



THE POOL



Unique - the 12-metre swimming pool, which runs transversely on the aft main deck is a first for a superyacht of this size and a technological challenge unlocked. The sun cushions invite you to dream.

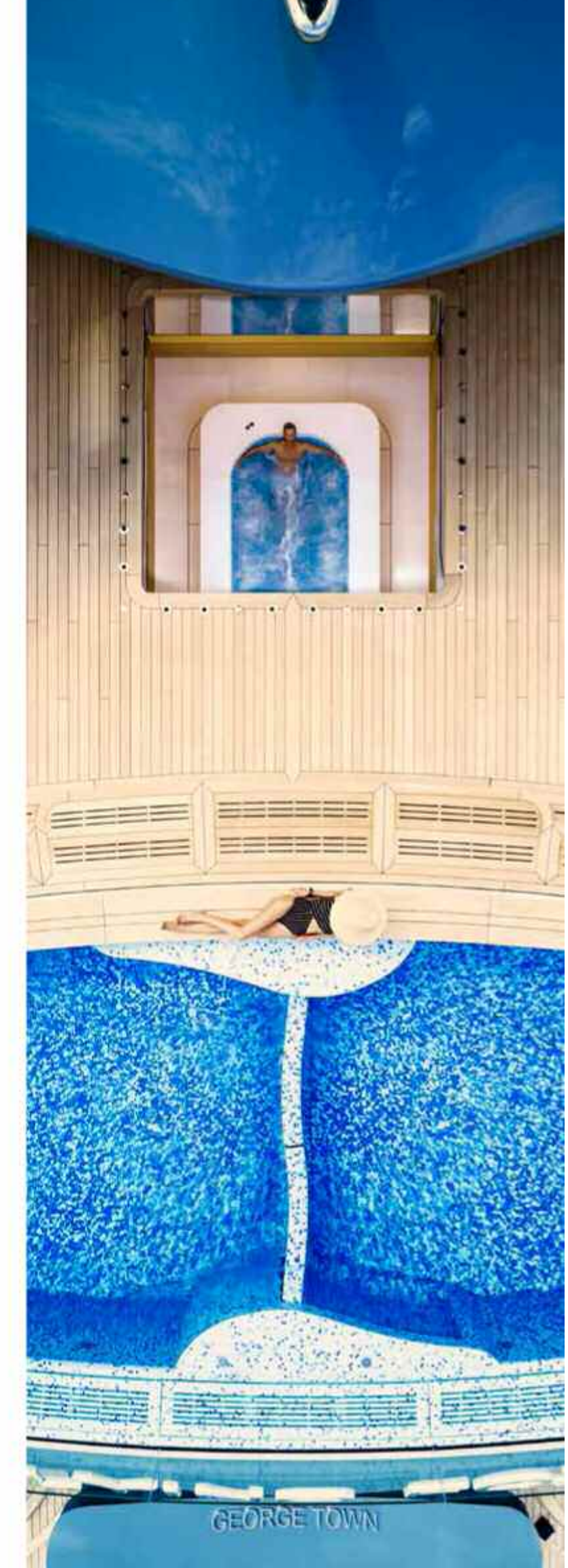




FLYING FOX



Extensive, open and half open deck areas offer a variety of retreat options without forgoing the sight of the open sea.





GUEST CABINS

- VIP Suite 10 "Lobster"
- VIP Suite 9 "Clownfish"
- VIP Suite 8 "Whale"
- VIP Suite 7 "Crab"
- VIP Suite 6 "Walrus"
- VIP Suite 5 "Turtle"
- Central Staircase
- VIP Suite 4 "Octopus"
- VIP Suite 3 "Hammer Head"
- VIP Suite 2 "Starfish"
- VIP Suite 1 "Sea Horse"

Unlike most large yachts, emphasis was placed on the same design of all suites on Flying Fox - there are no differences in the quality or equipment of the cabins.





VIP SUITES

The Mark Berryman interior offers ten suites for 22 guests on the main deck, all with private sea view terraces. The innovation in shape and comfort with a modern yet high level of outfitting create a calm atmosphere enhanced by the use of warm and natural textiles and neutral decorations.





Furniture, floors and decorative showcases are made of bamboo, teak and oak while the white carpets are made of tufted silk. Artificial skylights stretch across the entire ceiling bathing the living rooms and bathrooms in a pleasant even light.



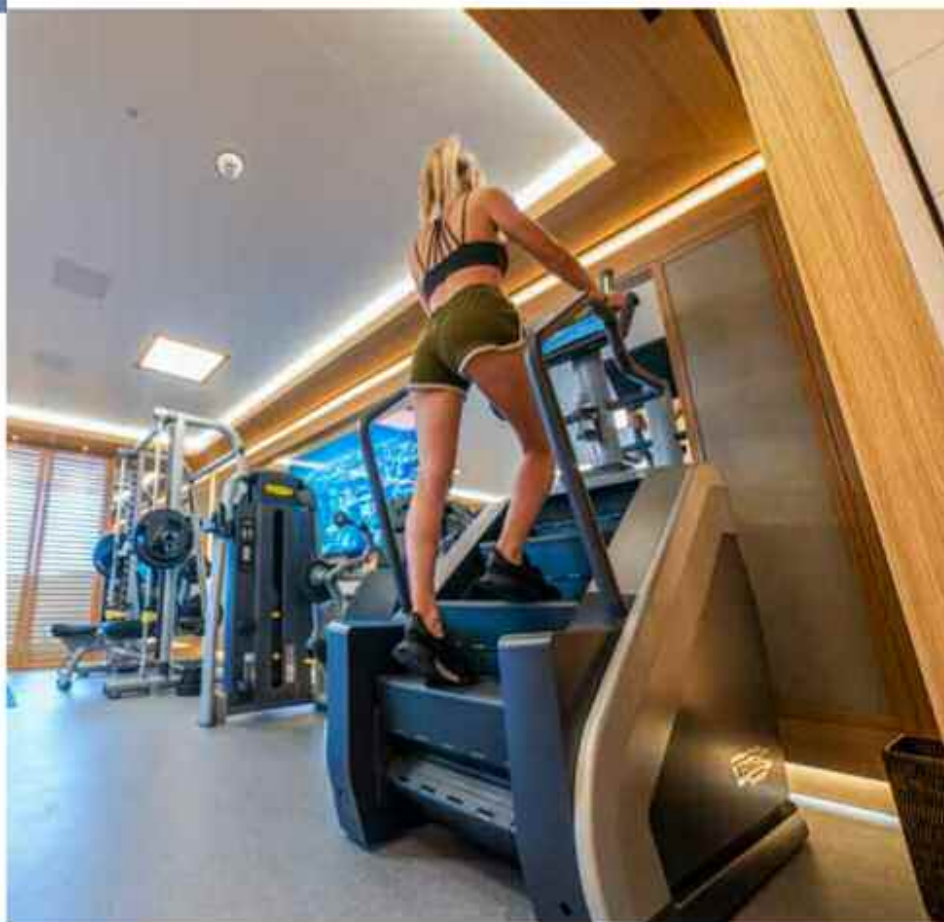


BEAUTY AND GYM

Designed for all, the beauty center offers everything that the body needs to feel good. From hair and skin care to manicure and pedicure, massages and spa treatments, you'll find everything you need to feel relaxed and attractive.



The gym on Flying Fox is a special feature. It is rare to find one of this enormous size on a yacht. With more than 90 square meters, it offers more than most professional sports clubs. You will find the newest high tech equipment available to bring your body into great shape.

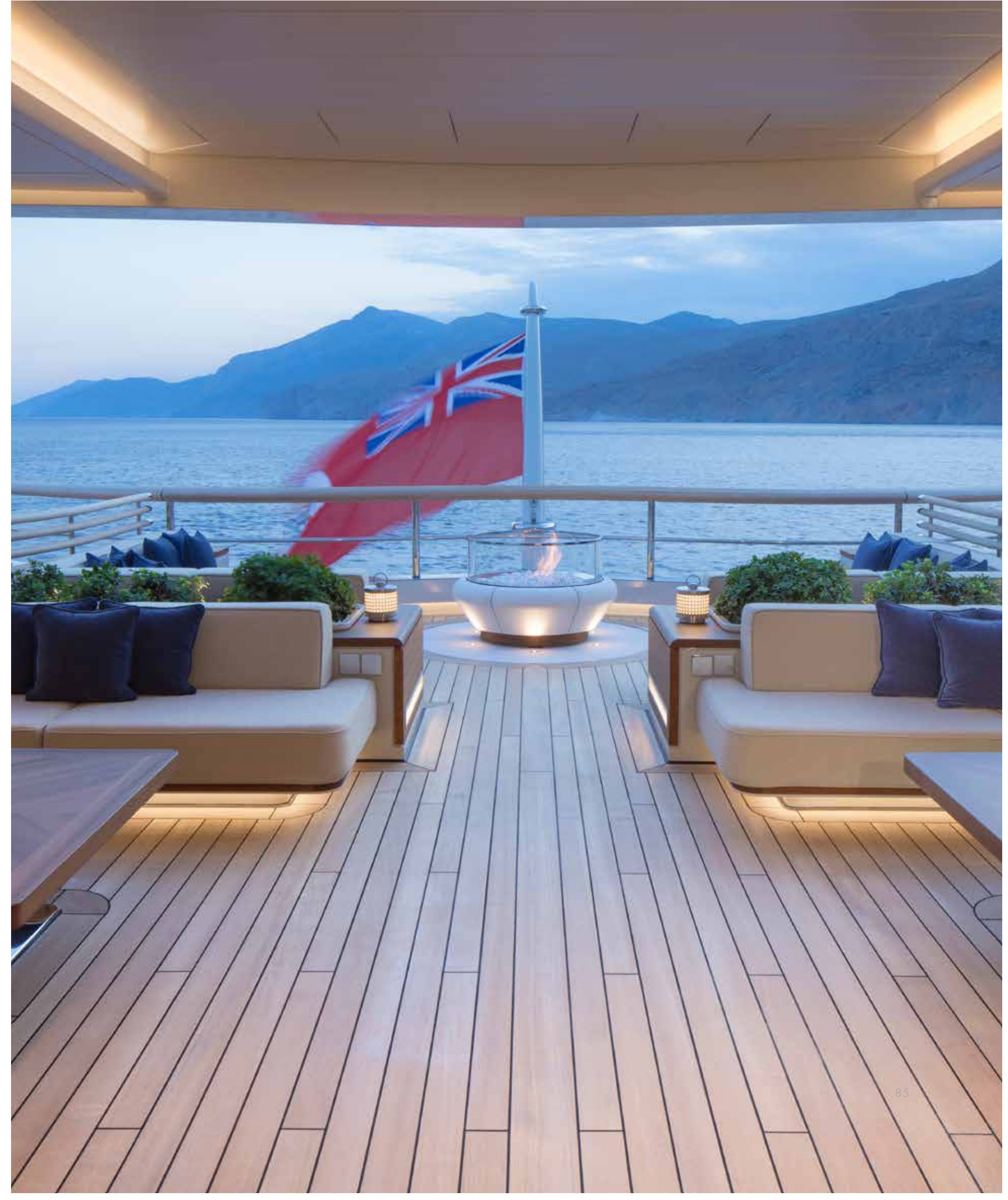




BRIDGE DECK







OUTSIDE DINING

The sumptuous seating on the aft bridge deck creates an elegant and comfortable atmosphere with formal dining surrounded by casual sofas. You can choose between airy outdoor living or an indoor feeling thanks to the sliding glass windbreakers on both sides.





The formal dining table is well protected from the elements and can seat 22 people.



Each guest can enjoy any kind of cuisine imaginable, with all kinds of appliances including a Teppanyaki grill, rotisserie oven, BBQ, spit roast, or tandoori oven. Two wet bars ensure the supply of all your favourite drinks.







MAIN SALOON

Impressive and unique is the 2-floor salon with fireplace, a maxi TV screen and a cuddly sofa on the starboard side's ground floor.







DINING

Opposite to port, partitioned by an artificial coral aquarium, you find a remarkable 22 seat dining table. Groups of selected plants provide a refreshing natural environment.



MAIN STAIRCASE

The central staircase which extends from the main deck to the bridge deck impresses with huge trees and an Etruscan style mosaic on the floor.







HELI PLATFORM

Arrive or depart efficiently and in privacy from the main helipad on the bow platform.







Right before touch down:
A sightseeing tour of
FLYING FOX on the helicopter to
see the impressive dimensions
and shapes of the yacht from
angles that are not possible
from the tender or from the shore.





CINEMA

For those who prefer true cinema enjoyment, enjoy the luxurious cinema with comfortable armchairs and a wide selection of films available.



WHEELHOUSE

FLYING FOX'S bridge is far from a normal command centre, clad in grey leather. This bridge radiates the same light and warm atmosphere as the living rooms. Interested guests can watch the bridge personnel at the ship's command.



UPPER DECK





UPPER DECK AFT

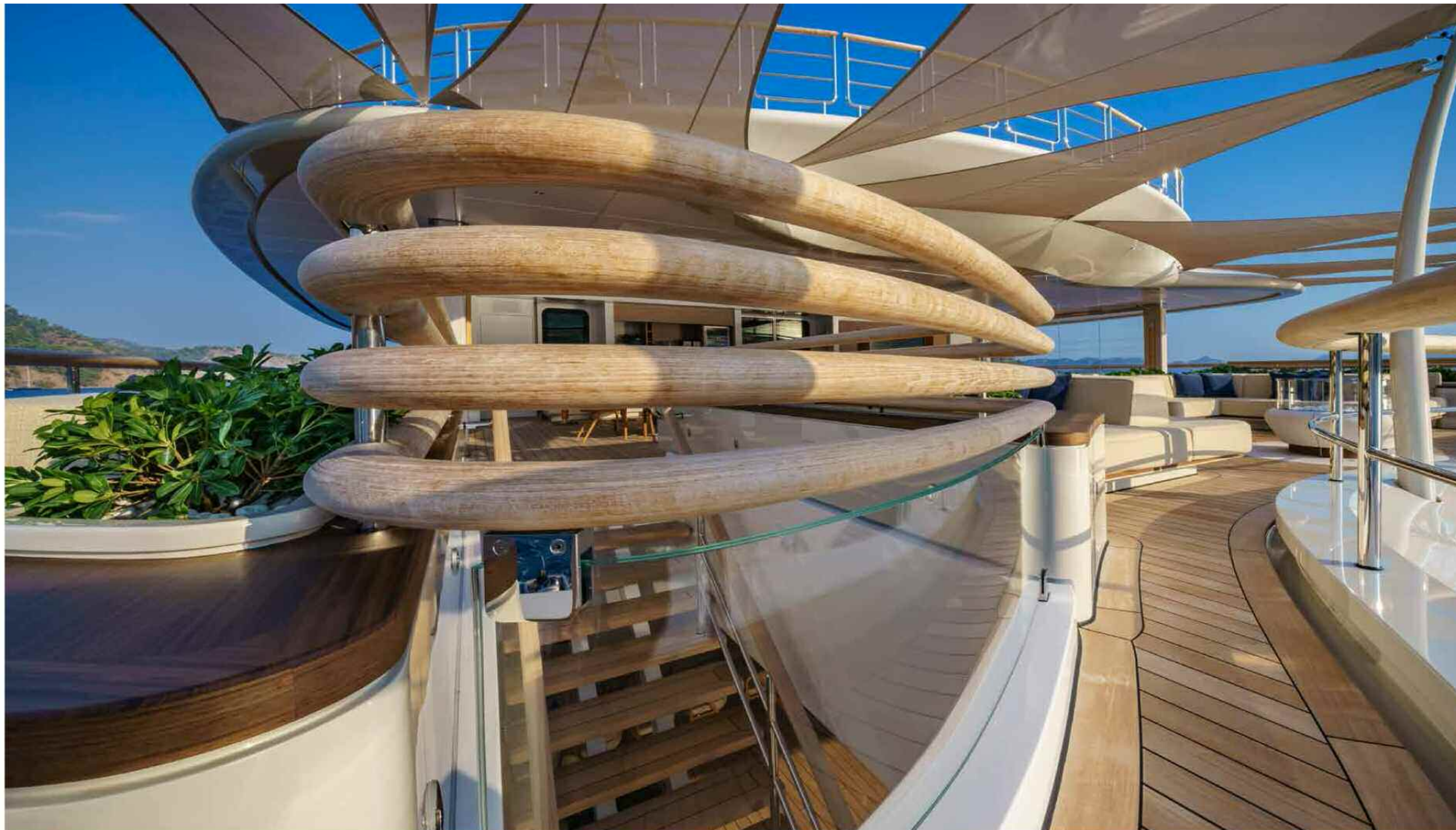
The upper deck boasts an opulent wetbar and a table for ten to port, a large TV lounge to starboard and a fireplace at the balustrade.





The shapes of the decks make you instinctively think of beautiful music, warm gentle sea breezes and complete relaxation. The filigree awnings let sunlight sparkle through, creating a symphony of light and shadow.





A look through a fisheye lens reveals the harmonious interplay of shapes, colours, materials and different surfaces. Untreated wood shows its natural charm when sun and salt water take their influence on it.



MASTER SALOON

Direct connection - stairs lead from the main saloon to a balustrade and the master saloon on the upper deck. Behind the bridge there is a conference room adjacent to the first officer's office.



A vertebra of a whale, a comfortable seating round and a dining table for only ten give the master saloon its special touch.





MASTER CABIN "SHELL"



The Master stateroom offers contemporary lines, with a breakfast table opposite to the king size bed on port.





Clear rectangular shapes define the sofa and coffee table in front of the gas-fuelled fireplace.



DRESSING ROOM

Large and well-lit, the mirrored dressing room offers ample storage as well as a seated vanity area.



MASTER BATHROOM



The en-suite bathroom with a central bath, double shower, two toilets, relaxing greenery and a view of the sea.

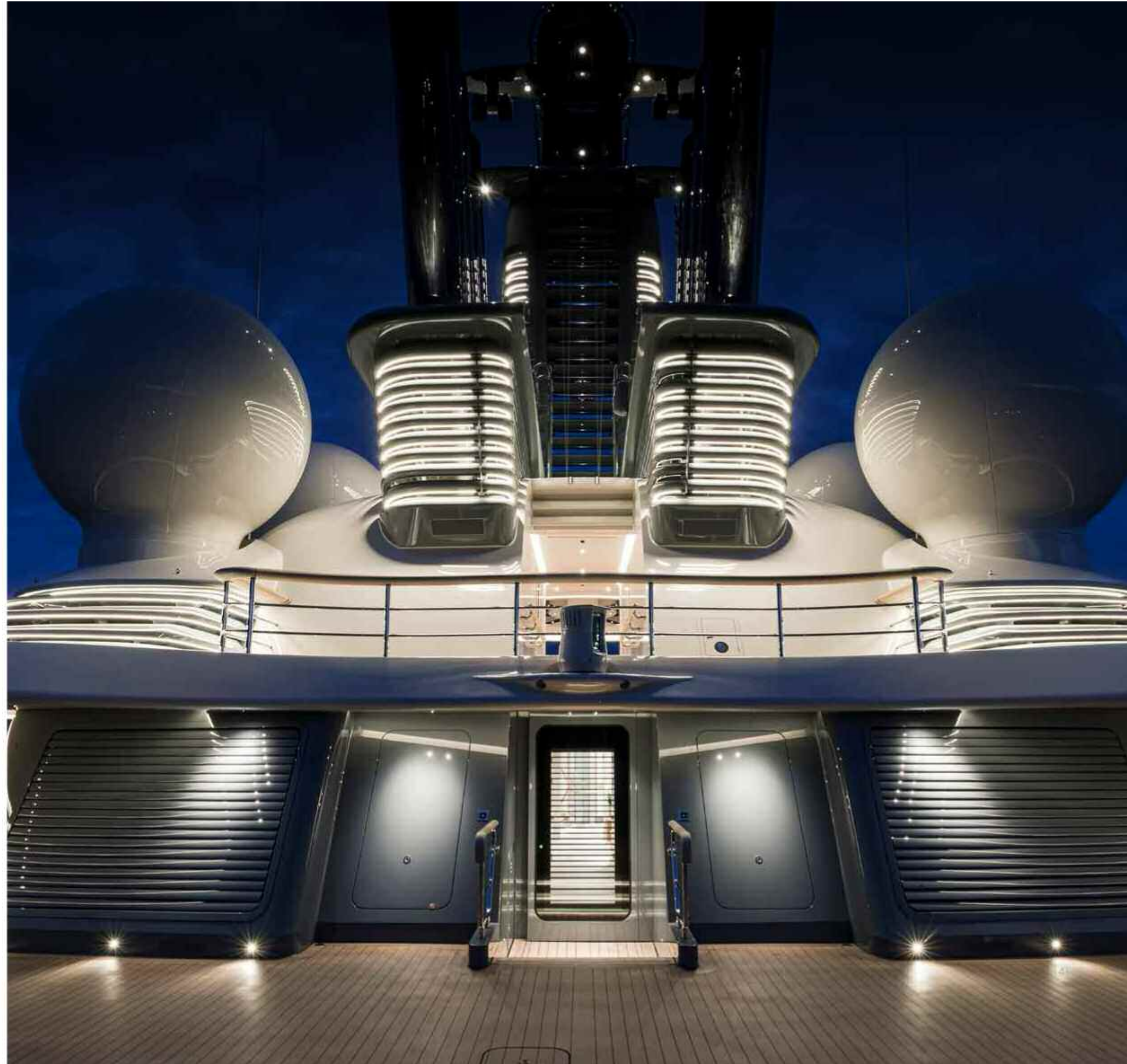


SUN DECK





This is far more than naval architecture or styling. This is sovereign modern art, impressively staged with light, stainless steel and teak – in perfect symmetry.





The dimensions of this huge yacht can only truly be appreciated in person.





Never seen before on a yacht:
The perfectly curved bulwarks
of the side decks. Here we clearly
see how far they protrude and how
much area is gained through it.





WINTER GARDEN

Flooded with light – three oversized circular skylights and floor-to-ceiling panoramic windows enchant the winter garden.



The gentle geometry of circular design is complemented by the colors of nature in the woods and fabrics, which are illuminated by the light of the skylights. A space that invites leisure or lively discussions with a breathtaking view. For evening, a small intimate bar provides relaxation.





ROOF DECK



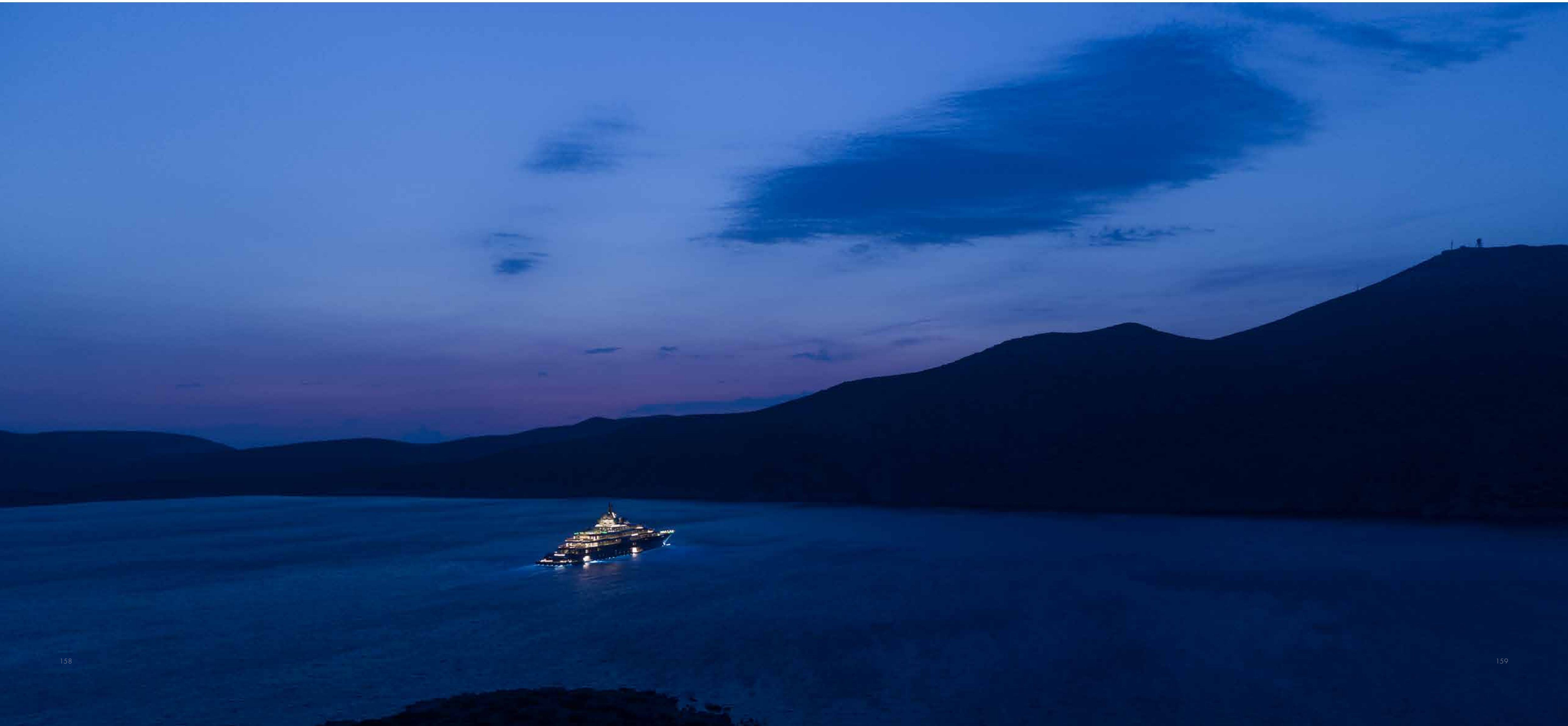
ELEVATOR



Thanks to the central skylight, natural daylight falls through the elevator shaft, down to the bottom of the lower deck.



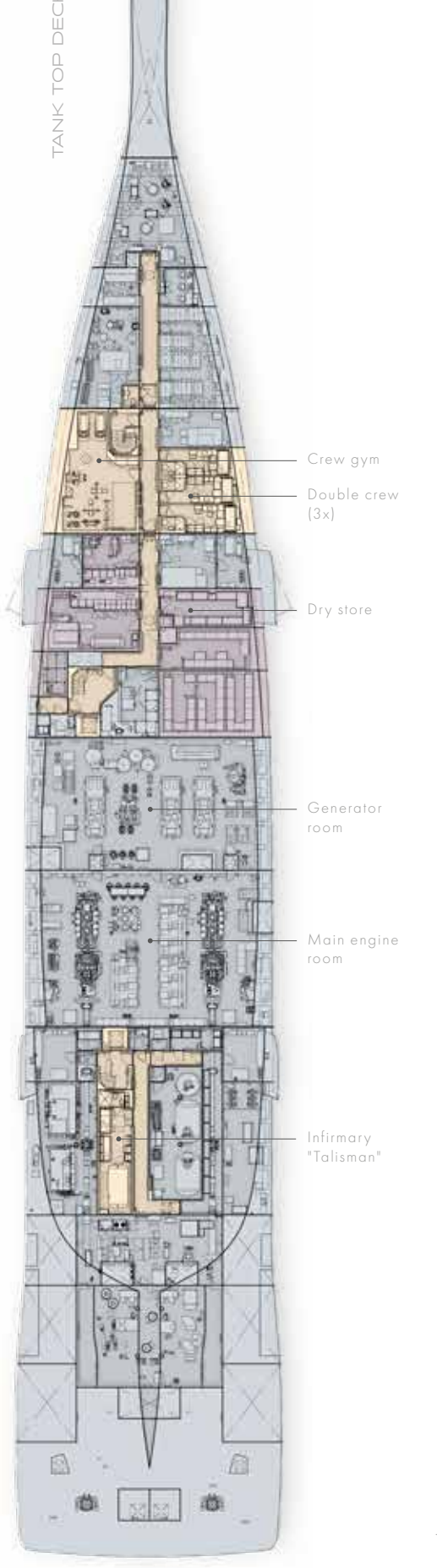
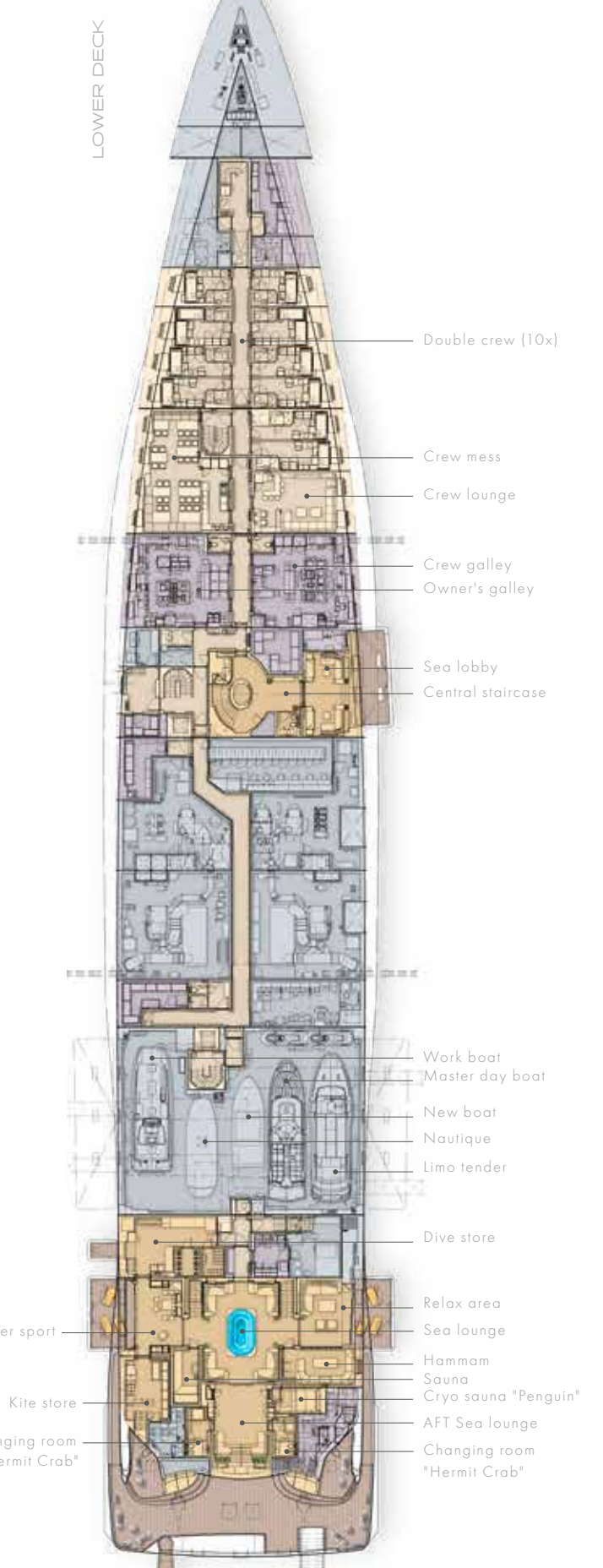
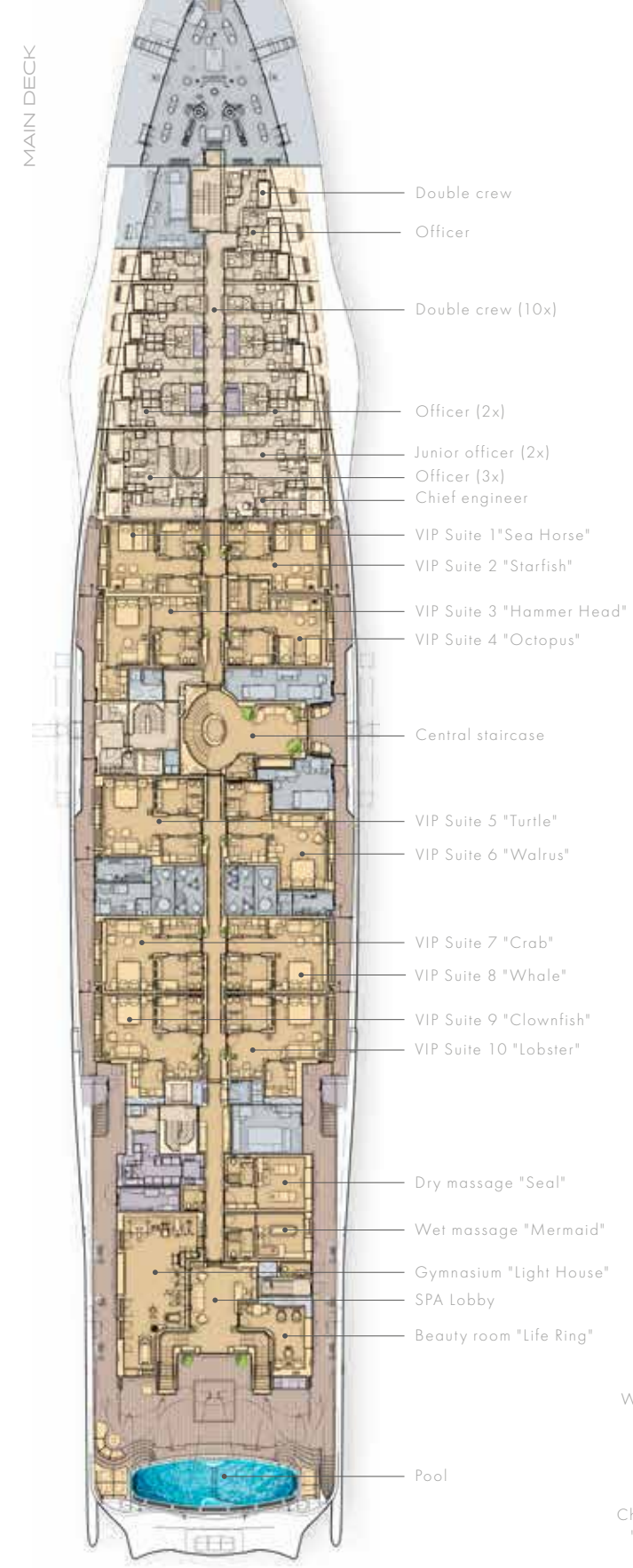
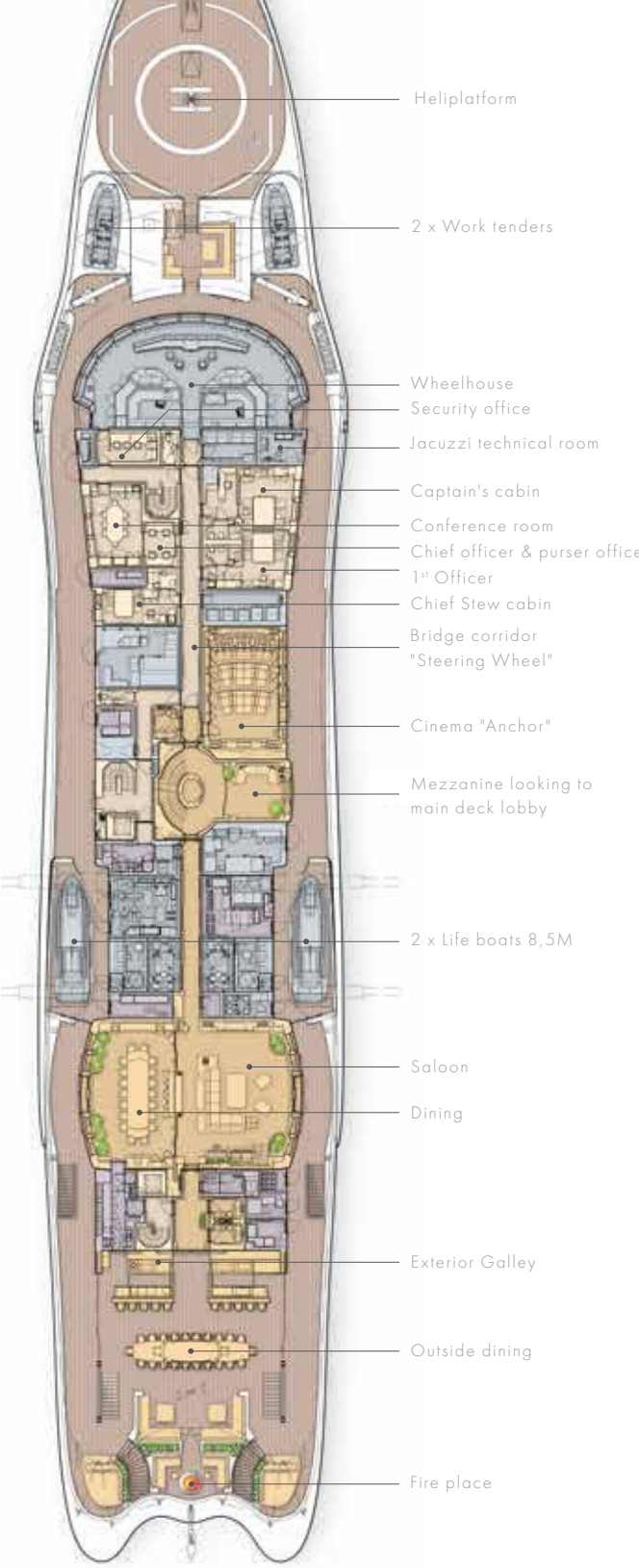
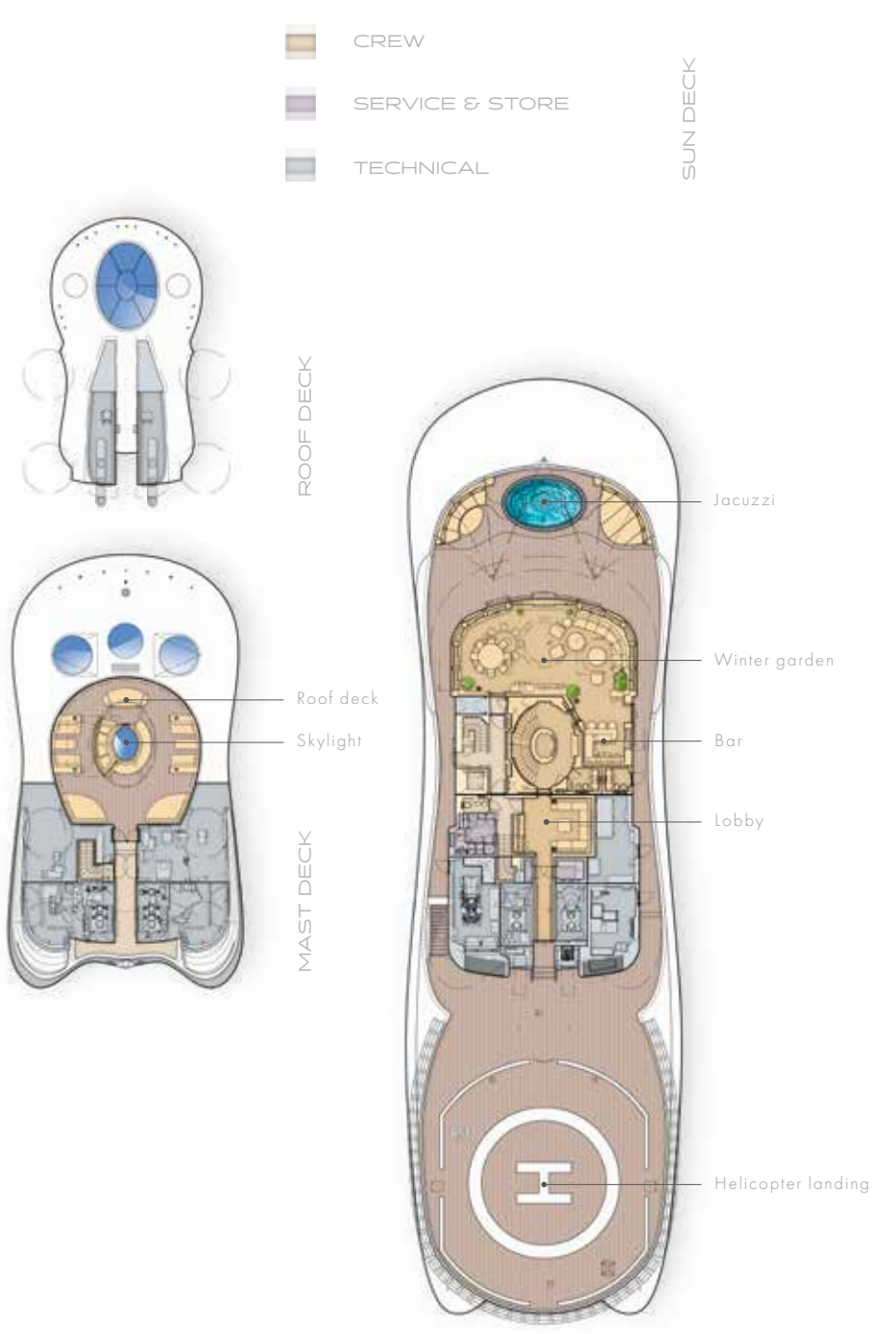






- OWNER
- GUESTS
- CREW
- SERVICE & STORE
- TECHNICAL

GENERAL ARRANGEMENT



SPECIFICATION

Shipyard: Lürssen
 Year: March 2019
 Exterior Design: Espen Øeino
 Interior Design: Mark Berryman
 Length Overall: 136.00m
 Length Waterline: 124.20m
 Beam: 22.50m
 Draught: 5.00m
 Construction: Steel Hull, Aluminium Superstructure
 Gross Tonnage: 9022GT
 Guests: 36 cruising / 22 sleeping (plus 3 additional Pullman beds, total 25)
 Crew: 54
 Maximum Speed: 20 knots
 Cruising Speed: 15 knots
 Range: 6,500 Nautical Miles

Main Engines: MTU 16V 1163 M84 twin CPP 5 blades
 Generators: MTU 12V 4000 M33F
 Stabilisers: Quantum QC 3600 XT Zero Speed (Forward)
 Quantum QC 3600 Zero Speed (After)

Stern Thruster: Brunval FU45 LRC 1375
 Bow Thruster: Brunval FU63 LRC 1750
 Fuel Capacity: 682,500L
 Classification: DNV / GL Passenger Yacht code

Guest Accommodation: Large staterooms with office, bathroom, walk in wardrobe and beauty salon.
 All Guest suites have their own balcony
 10 Guest suites on Main deck, 7 with double beds,
 3 twin. All Main deck suites have either a pulman bed or single sofa bed which
 can be transformed into a double bed.

2 Helipads: One on Sun deck aft (D-Value 18m), fitted for Airbus EC175 helicopter
 One on Bridge deck forward (D-Value 14m).

Tenders: 12.5m Custom Compass Enclosed Limousine Tender
 11.8m Custom Windy Open Limousine Tender
 10.5m Compass Beach Landing Craft
 8.5m G25 Super Air Nautique Coastal
 6.8m Pascoe Jet Drive RHIB Work Tender
 6.8m Pascoe Stern Drive RHIB Work Tender
 2 x 8.5m Fassmer SEL-RT Life Boats

Water Sports: 2 x Sea-Doo GTX LTD 300 Jet-Skis
 1 x Sea-Doo GTX LTD 260 Jet-Ski
 2 x Mansory Custom Sea-Doo Jet Skis
 1 x Sea-Doo 260 RD Jet-Ski
 04 x F55 Seabobs
 Zapata-Racing Legend Flyboard
 Zapata-Racing Hoverboard
 Kayaks
 Stand-up Paddleboards
 Large Selection of Kitesurfing Equipment
 Large Selection of Diving Equipment
 Onboard Doublelock Decompression Chamber (IHC 1600 mm, 3-seats)
 Wakesurfing Equipment
 Waterskiing Equipment
 Large Selection of Towing Inflatables
 Wetsuits
 Protective Equipment
 Fishing Equipment

Communications: VSAT, GSM Comprehensive Vessel-Wide WIFI Network for Internet
 Entertainment: Bespoke AVIT system, Satellite TV, Large Music Selection
 Large TV, Movie-, Radio Selection and Security system



©FLYING FOX 2019 - all rights reserved.

This brochure is produced for marketing purposes only.

Items depicted are shown for illustration purposes only.

Any charter of this yacht is subject to contract.