

FOR CHARTER

# GALLEN



Embrace the wild side of yacht charter on board Galene. Discover a world of excitement beyond the beach and the boutiques, guided by Galene's adventurous crew. Surf the summer mistral or push yourself to eye-popping speeds on a jetski. With a range of state-of-the-art water toys and the expert crew know-how to help you get the most from them, you'll find something different to do every day.

# ADVENTURE IS CALLING

By day, you're a daredevil. By night, a connoisseur. As the sun sets, unwind on Galene's spacious sun deck and decompress from a day of action. If it's down time you need, Galene's light, peaceful interior oozes calm. Understated, chic and with a subtle art-deco flavour, her accommodation is the perfect contrast to the high-octane pace you can experience outside on the water.

FOR CHARTER



GALENE

# SPECIFICATION



**BUILDER**

AMELS

**GUESTS**

12 IN 5 CABINS

**LENGTH**

55M (180'5")

**DRAFT**

3.4M (11'2")

**BUILT**

2020

**CREW**

13

**BEAM**

9.4M (30'10")

**MAX SPEED**

15.5 KNOTS

FOR CHARTER

GALENE



GALENE

FOR CHARTER

GALENE



Chic, understated spaces offering the perfect blend of sophistication and comfort define the interior of Galene.

# SERENE AMBIENCE

Neutral shades accented by warmer tones and subtle textures create a serene ambience which offsets the thrills to be found outside on the water. As the evening draws in, Galene's interior provides the perfect stage to relax and reflect on the day's escapades.







DINING AREA

GALENE





BRIDGE DECK SALON

GALENE



BRIDGE DECK SALON



GALENE



BRIDGE

GALENE

Galene can accommodate 12 guests in five luxurious cabins.

# AN OASIS OF CALM

On the main deck, a large, full beam master suite offers a super king bed, his and hers bathrooms and wardrobes as well as a private fold-down balcony. Two double VIP suites, and two convertible cabins with Pullman beds provide an oasis of calm on the lower deck.







PRINCIPAL CABIN



GALENE



PRINCIPAL CABIN BALCONY

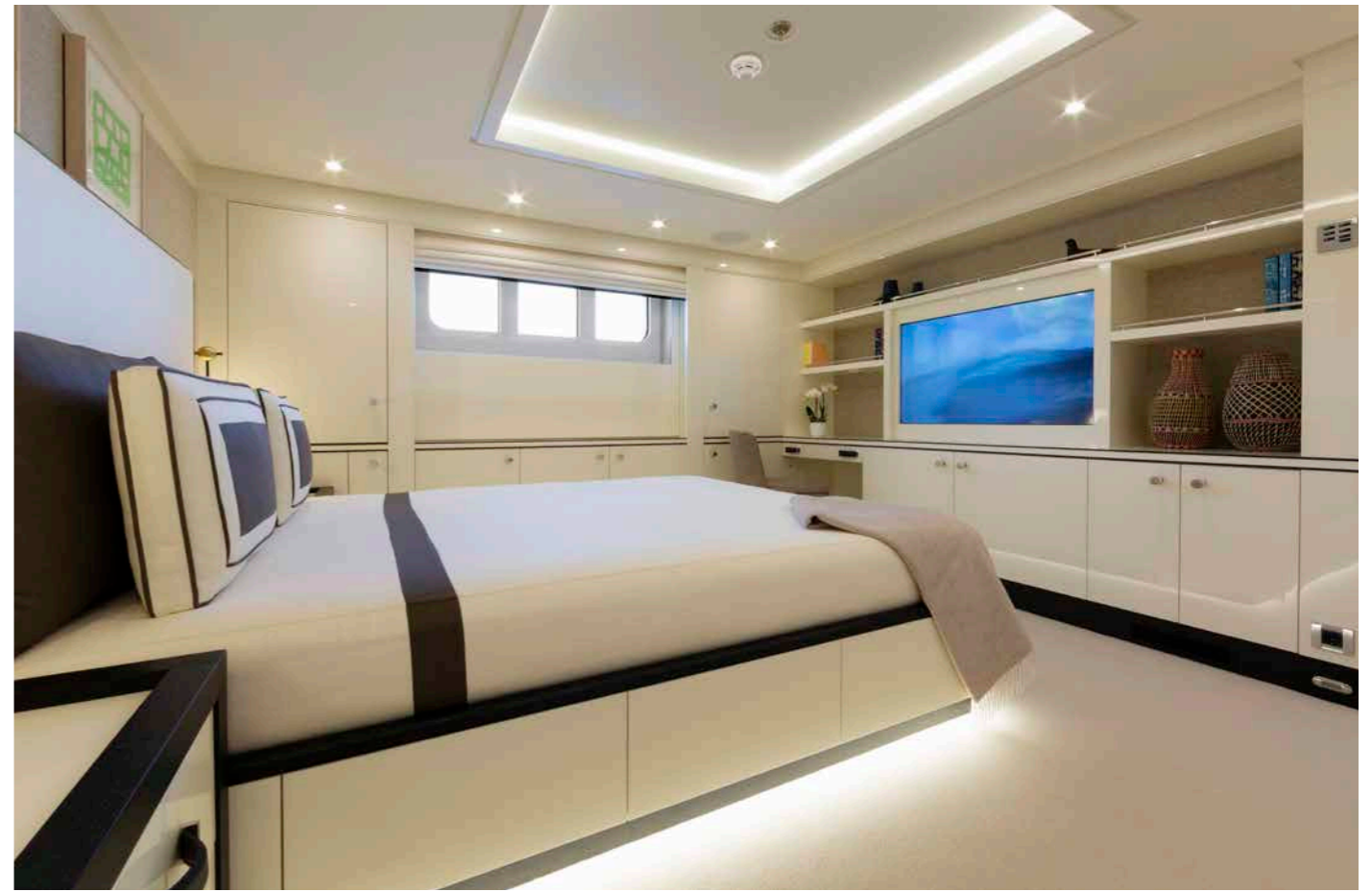
GALENE



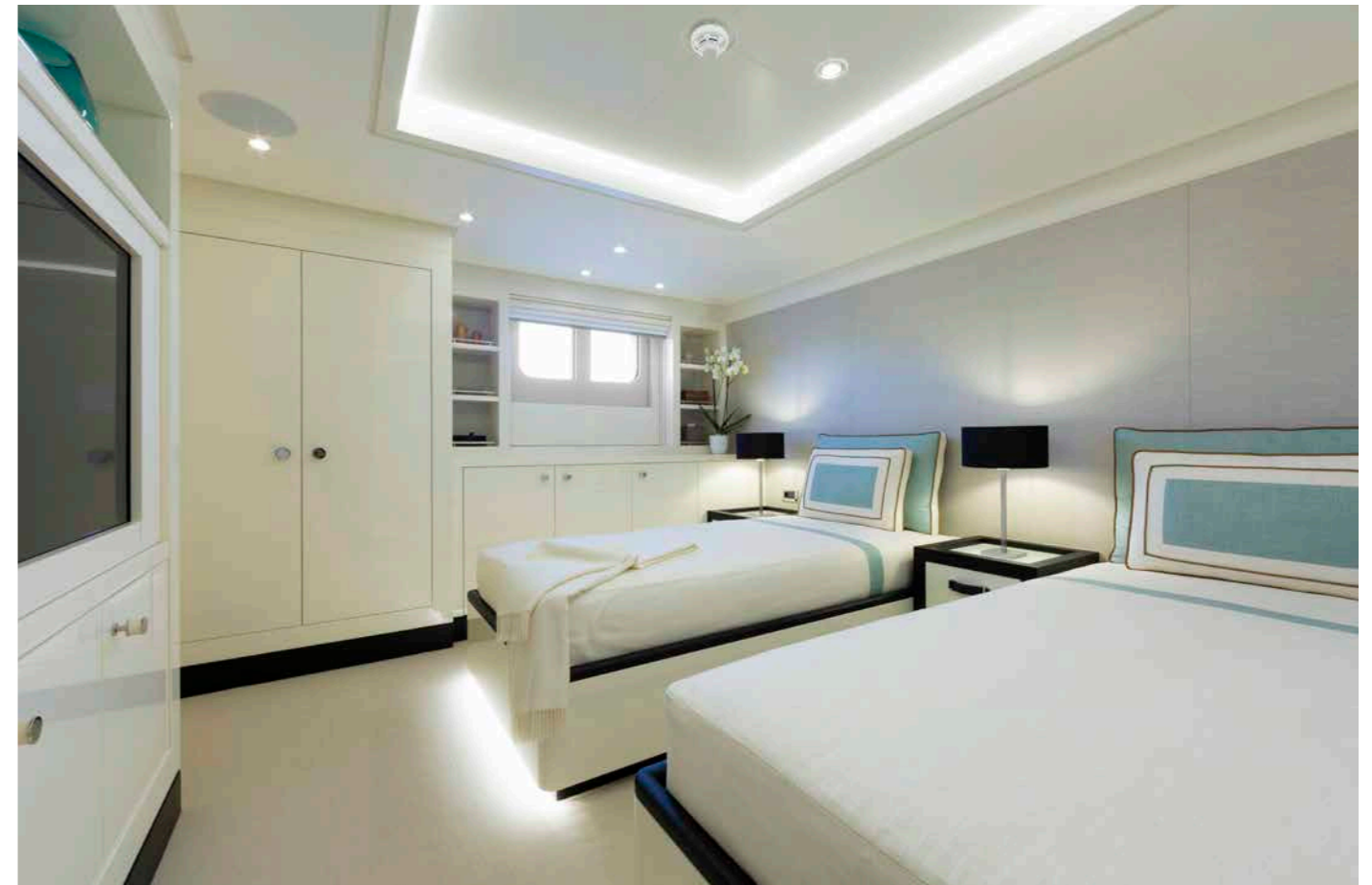
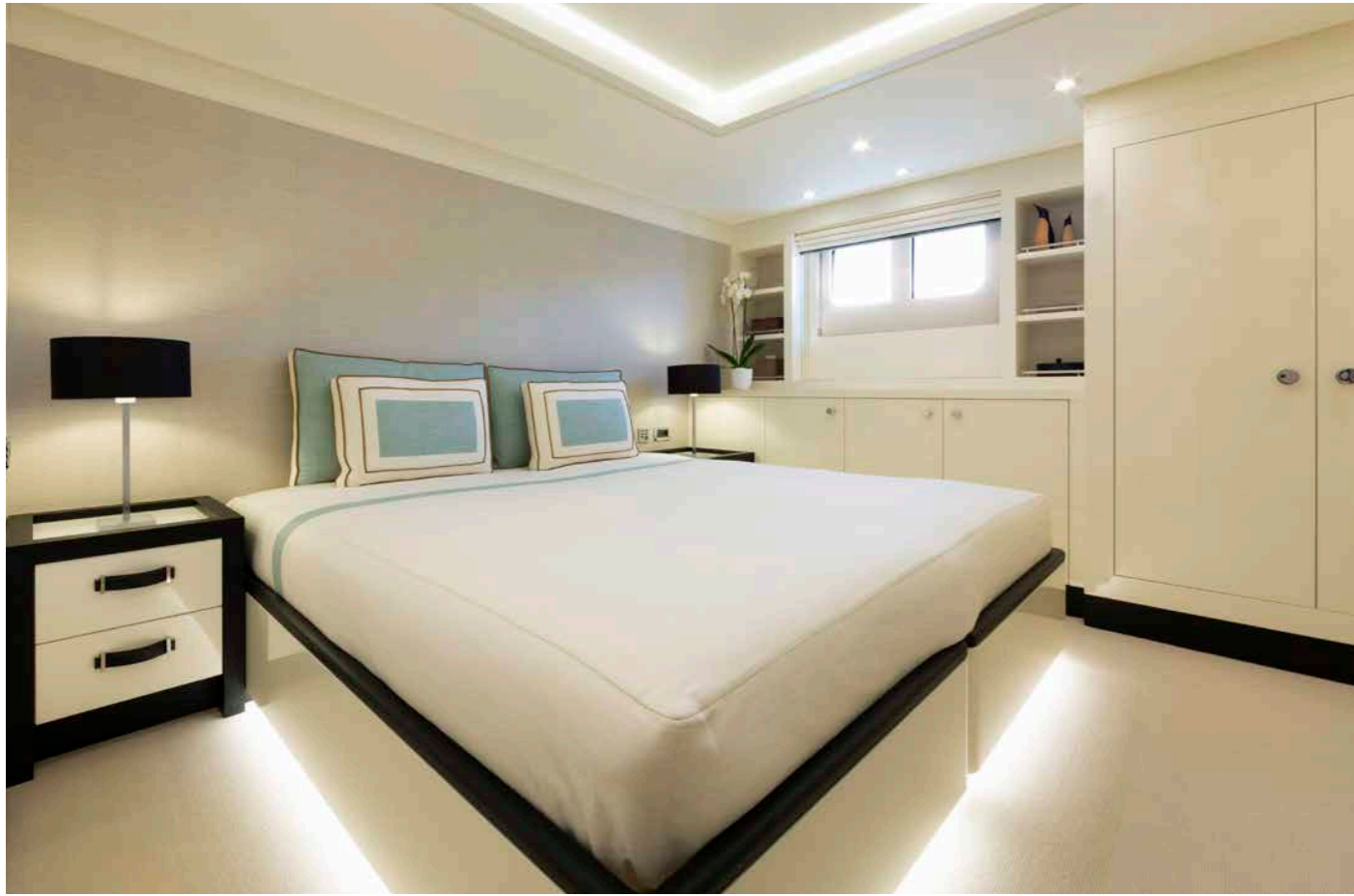




VIP GUEST CABIN



GALENE



GUEST CABINS

GALENE



At the forefront of Galene's incredible deck spaces is her vast sun deck. Featuring a covered bar, lounge area with optional awnings, and a large jacuzzi with an indulgent sunbathing area, this is the ultimate place to soak up the views.

# AS GOOD AS IT GETS

Witness a stunning sunset whilst enjoying a spectacular evening meal around the 12-person dining table on the bridge deck, relax with a coffee on the main deck or get straight to it by diving in from the swim platform. Outdoor living on Galene is as good as it gets.



---

SUN DECK

GALENE



SUN DECK

GALENE





SUN DECK

GALENE







BRIDGE DECK

GALENE



MAIN DECK



GALENE

The toys inventory has to be seen to be believed. Take on the challenge of trying everything at least once and you'll have an action-packed adventure, from the high-octane pace of the jetskis and electric surf board to more thoughtful exploration on stand up paddle boards or peaceful fishing trips in quiet coves.

# ACTION PACKED

Inflatable toys, five different types of towables, snorkelling gear and more will keep you occupied from the first light until the sun goes down. The question is: where to start?



# THE TOYBOX

**SCORPION SILURIAN 10.5M**

**PASCOE DT 7M**

**JET SKI SEA-DOO SPARK X2**

**F5S SEABOBS X2**

**JOBE WAKE SURF X1**

**JOBE WAKEBOARDS X2**

**JOBE WATERSKIS X1**

**NAISH WING 3M AND 6M X2**

**DUOTONE KITE SURF EQUIPMENT:**

**BOARDS X3**

**KITES FROM 7M TO 15M X8**

**FANATIC WINDSURFING BOARDS WITH 4X SAILS**

**ZEST SAILING DINGHY 3.6M**

**KAYAKS X2**

**RIGID SUP ALL WAVE FANATIC CARBON X3**

**INFLATABLE SUP FANATIC X2**

**TWO PERSON TOWABLE X2**

**STAR SHIP TOWABLE X1**

**BIG FLAMINGO INFLATABLE X1**

**INFLATABLE PLATFORM X1**

**AQUAGLIDE TANGO X1**

**SNORKEL EQUIPMENT**

**FISHING GEAR**



TENDERS & TOYS



GALENE





GALENE



TENDERS & TOYS

GALENE





FOR CHARTER

GALENE

# SUN DECK

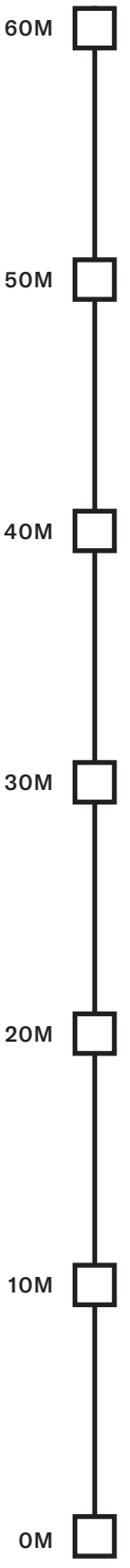
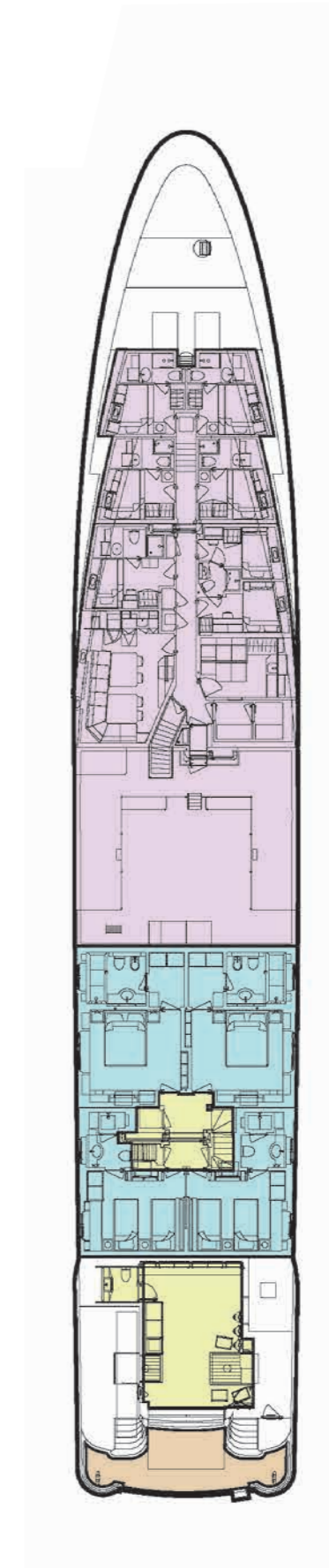
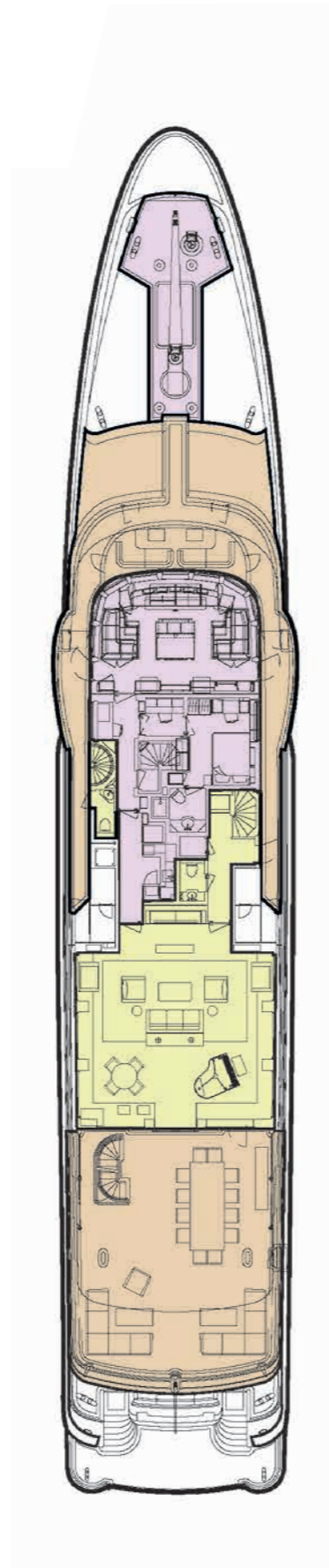
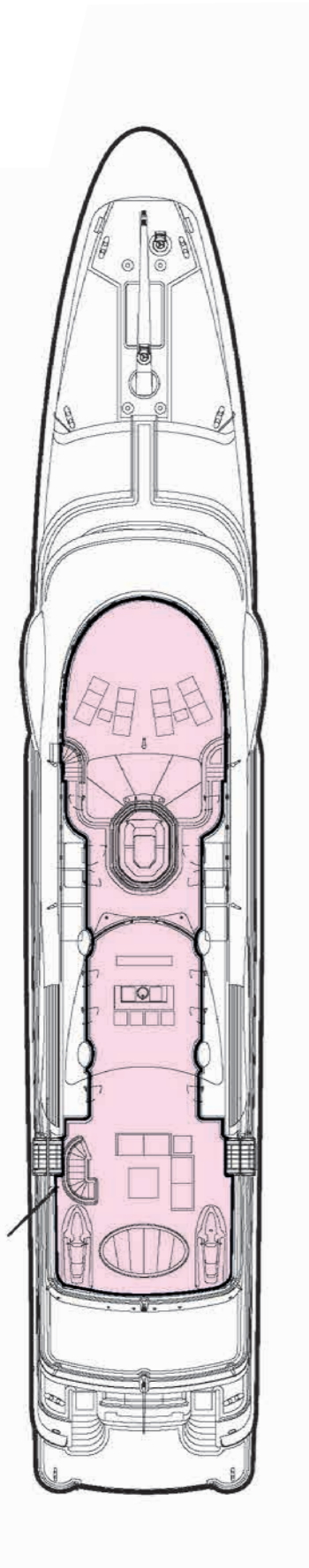
# BRIDGE DECK

# MAIN DECK

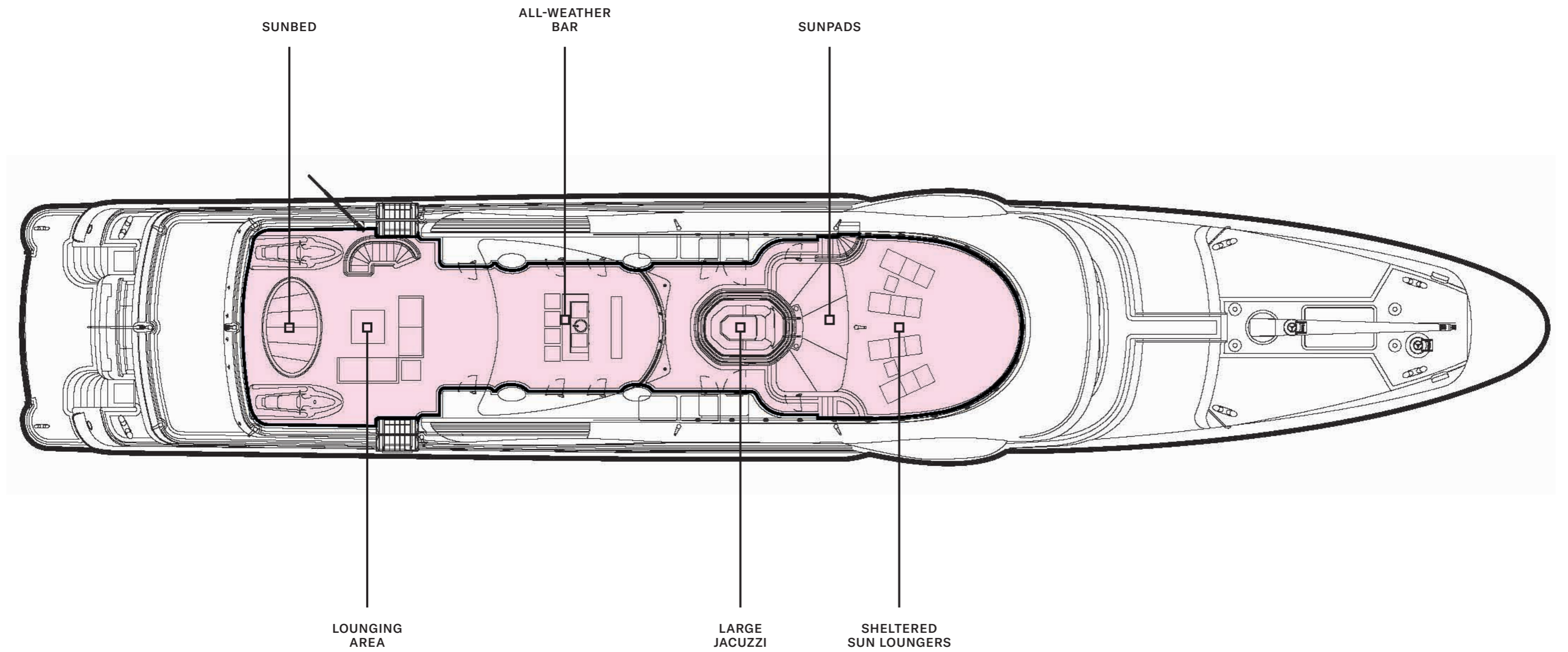
# LOWER DECK

### KEY

- DECK
- GUEST AREAS
- PRINCIPAL CABIN
- GUEST CABINS
- SUN DECK
- CREW AREAS



# SUN DECK



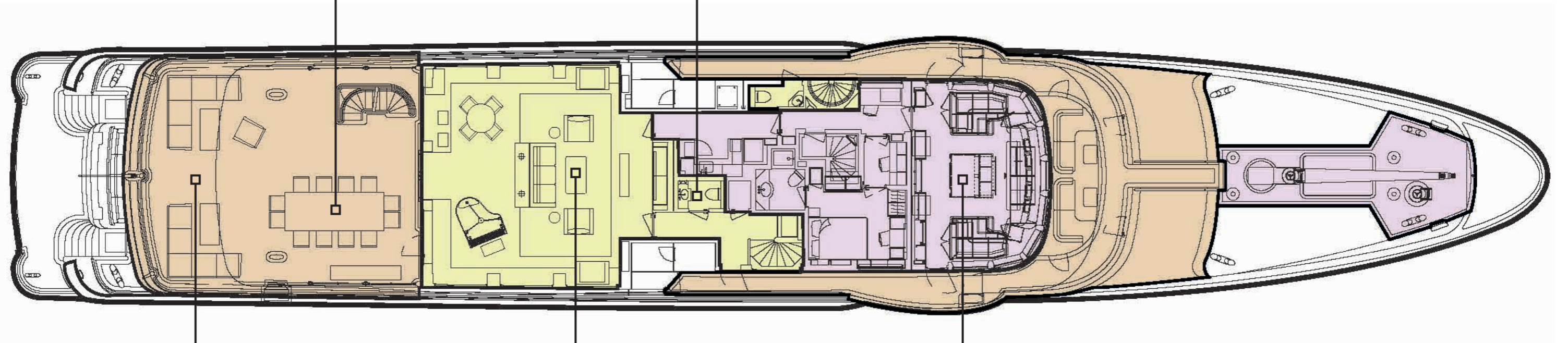
## KEY

- DECK
- GUEST AREAS
- PRINCIPAL CABIN
- GUEST CABINS
- SUN DECK
- CREW AREAS

# BRIDGE DECK

AL FRESCO  
DINING

DAYHEAD



AFT SEATING  
AREA

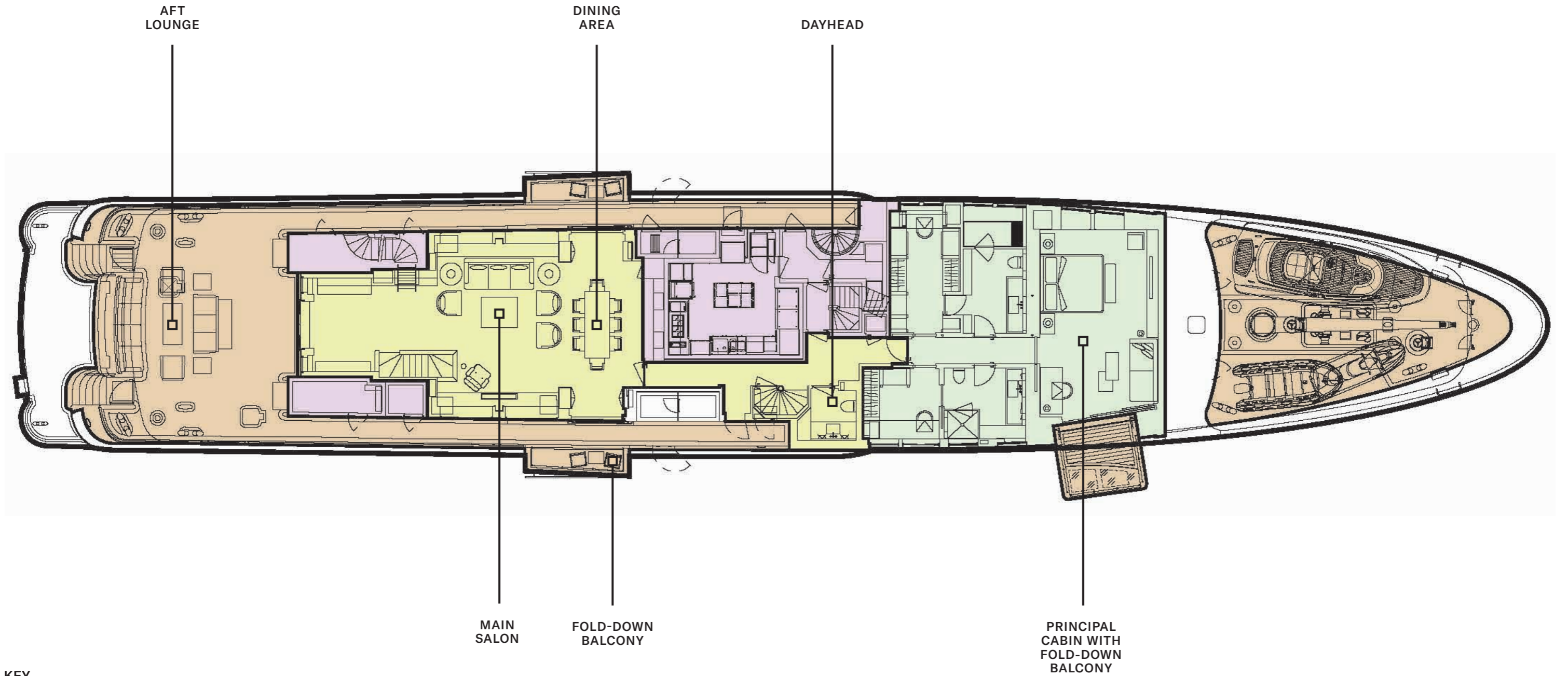
UPPER LOUNGE  
WITH PIANO

BRIDGE

## KEY

- DECK
- GUEST AREAS
- PRINCIPAL CABIN
- GUEST CABINS
- SUN DECK
- CREW AREAS

# MAIN DECK



## KEY

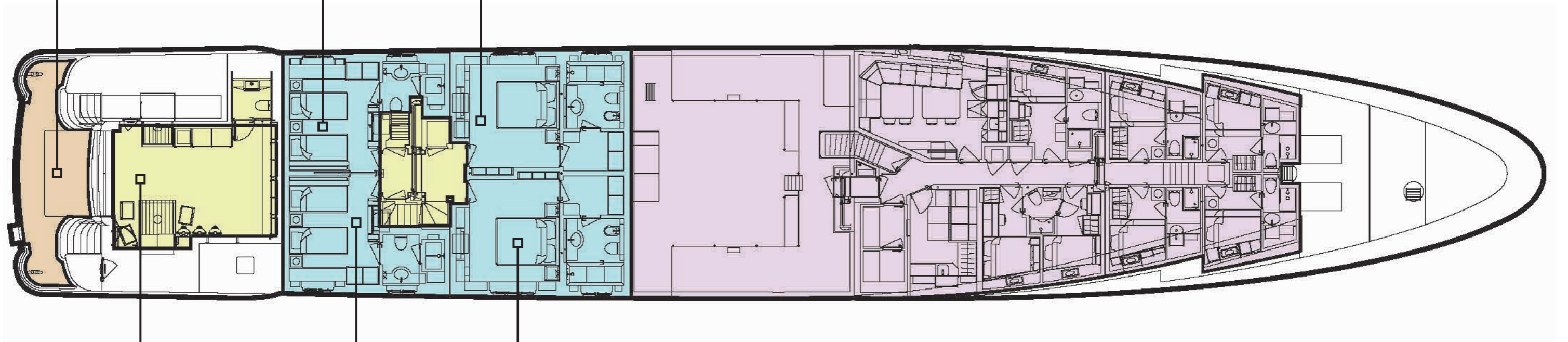
- DECK
- GUEST AREAS
- PRINCIPAL CABIN
- GUEST CABINS
- SUN DECK
- CREW AREAS

# LOWER DECK

SWIM  
PLATFORM

CONVERTIBLE  
GUEST CABIN WITH  
PULLMAN BED

VIP DOUBLE  
GUEST CABIN



BEACH CLUB  
& TOY STORAGE

CONVERTIBLE  
GUEST CABIN WITH  
PULLMAN BED

VIP DOUBLE  
GUEST CABIN

## KEY

- DECK
- GUEST AREAS
- PRINCIPAL CABIN
- GUEST CABINS
- SUN DECK
- CREW AREAS

FOR CHARTER

# GALLEN

