



# LET IT BE

118' 1" (35.97m) | Tecnomarine | 1998

# LET IT BE

## BASIC SPECIFICATIONS

---

### BUILDER

Tecnomarine

### BEAM (ft/m)

24' 1" (7.32m)

### CRUISING/MAX SPEED

20 / 24 Knots

### CREW

8

### RANGE

500 nm

### LENGTH (ft/m)

118' 1" (35.97m)

### DRAFT (ft/m)

8' 1" (2.44m)

### FUEL CONSUMPTION

750 Litres/Hr

### ACCOMMODATION

12 guests in 5 cabins

### INTERIOR DESIGNER

N/A

### BUILT/REFIT

1998 / 2016

### GROSS TONNAGE

236 GT

### ENGINES

2 x MTU 2262HP

### ARRANGEMENTS

3 Double, 2 Twin

# LET IT BE

## KEY FEATURES

---

- › SPACIOUS EXTERIOR AREAS ON MAIN & UPPER DECK TO ENTERTAIN GUESTS
- › INTERIOR AREAS DESIGNED IN CLASSIC LINES AND SOPHISTICATED SET UP
- › STABILISERS UNDERWAY
- › VARIETY OF WATER SPORT TOYS

# LET IT BE

## WATER TOYS

---

- › TENDER LOMAC 4.5M WITH YAMAHA 60HP
- › 1 X SET WATER SKI CHILDREN
- › 2 X PADDLE BOARDS (SUP)
- › 2 X SEA BOB F5
- › PLASTIMAR 2.6M WITH YAMAHA 2.5HP
- › 1 X WAKEBOARD
- › 2 X SUP AM WITH ELECTRIC POWERED FIN
- › SNORKELING EQUIPMENT
- › 2 X SETS WATER SKI ADULT
- › 2 X 1SEATER CANOE'S
- › 2 X TUBES
- › FISHING EQUIPMENT

LET IT BE



LET IT BE



LET IT BE







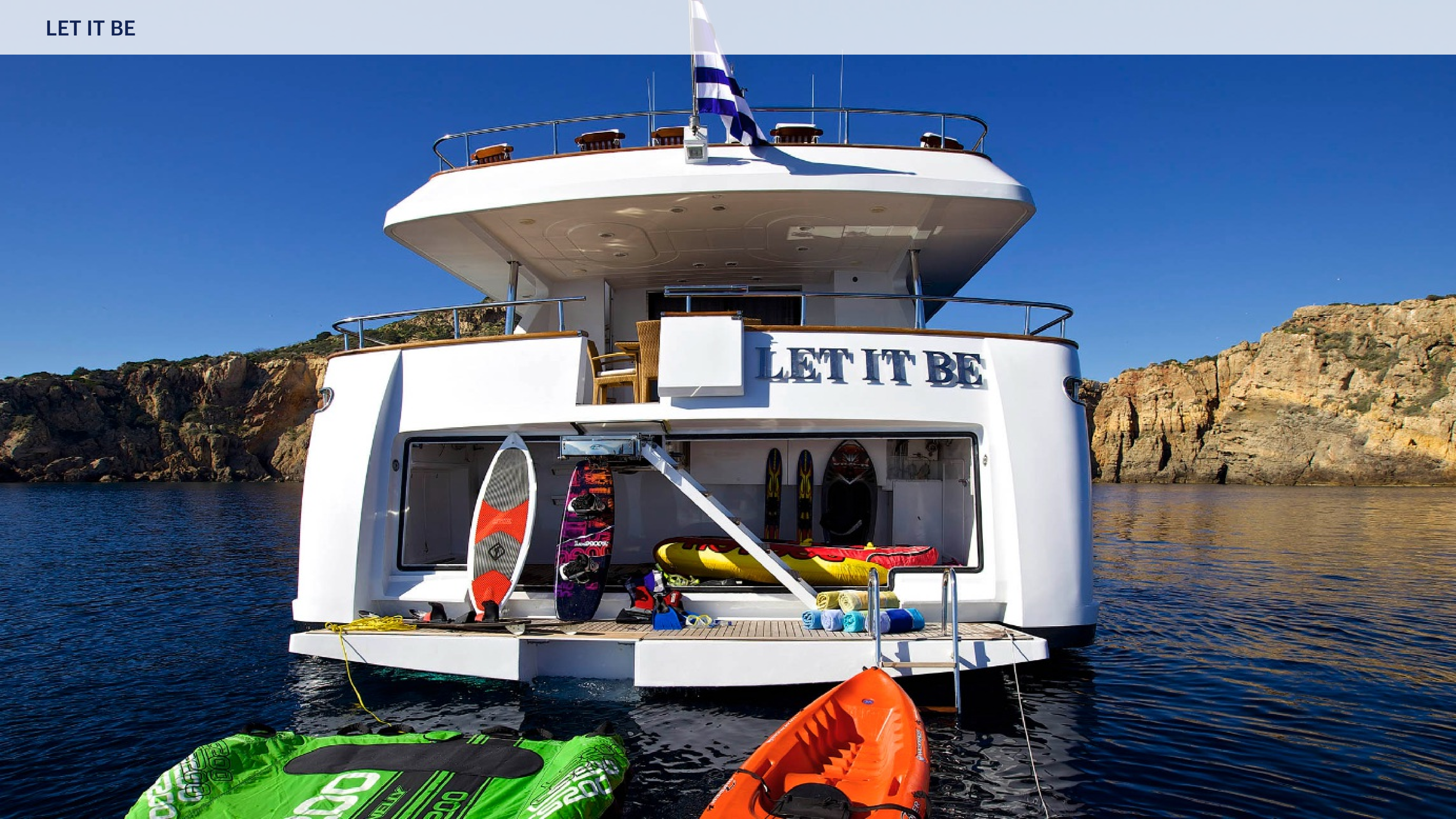
LET IT BE

AERIAL VIEW





LET IT BE



LET IT BE

AFT DECK



LET IT BE

AFT DECK

















































LET IT BE

MASTER CABIN - ENSUITE BATHROOM











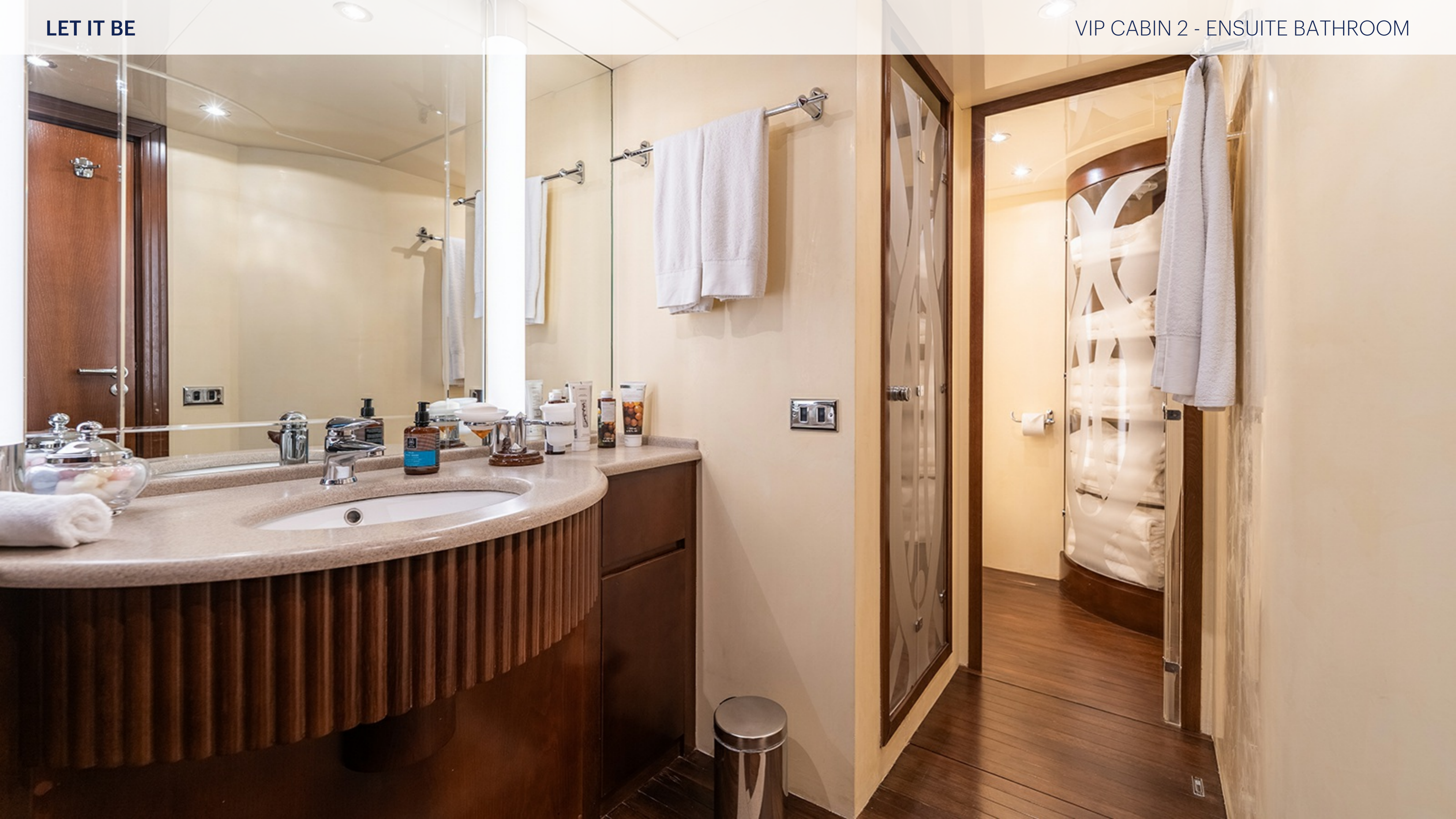














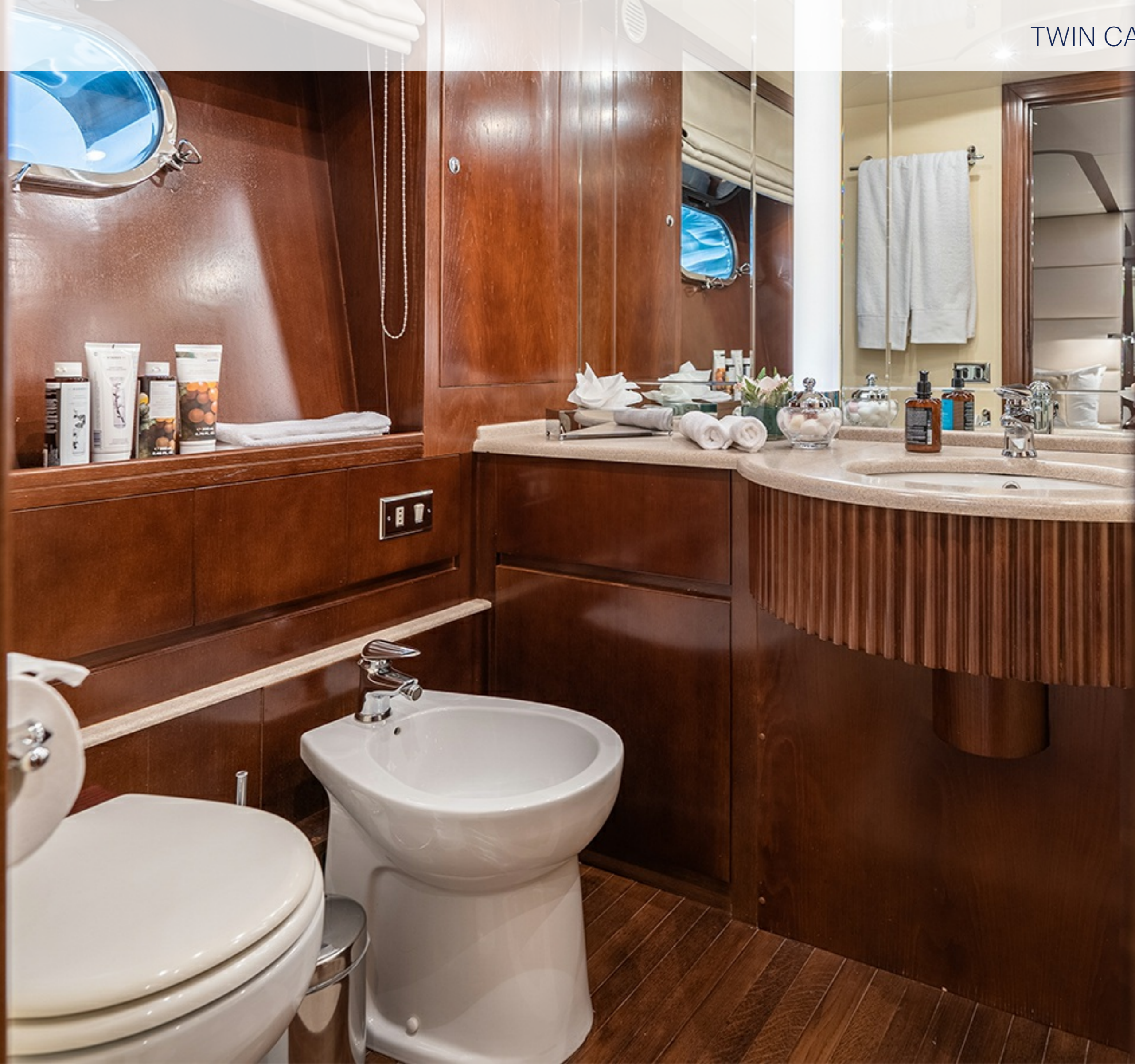






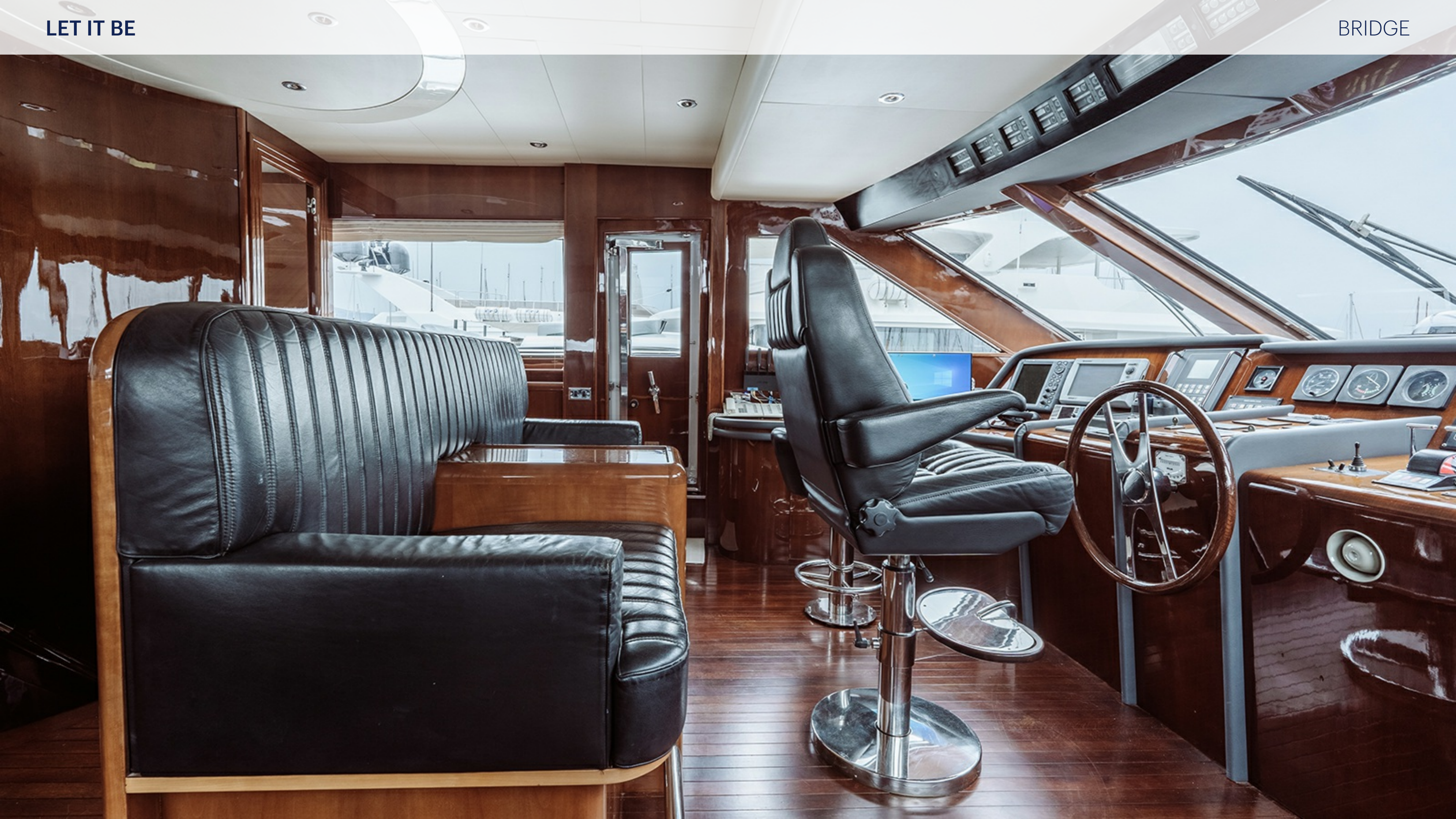










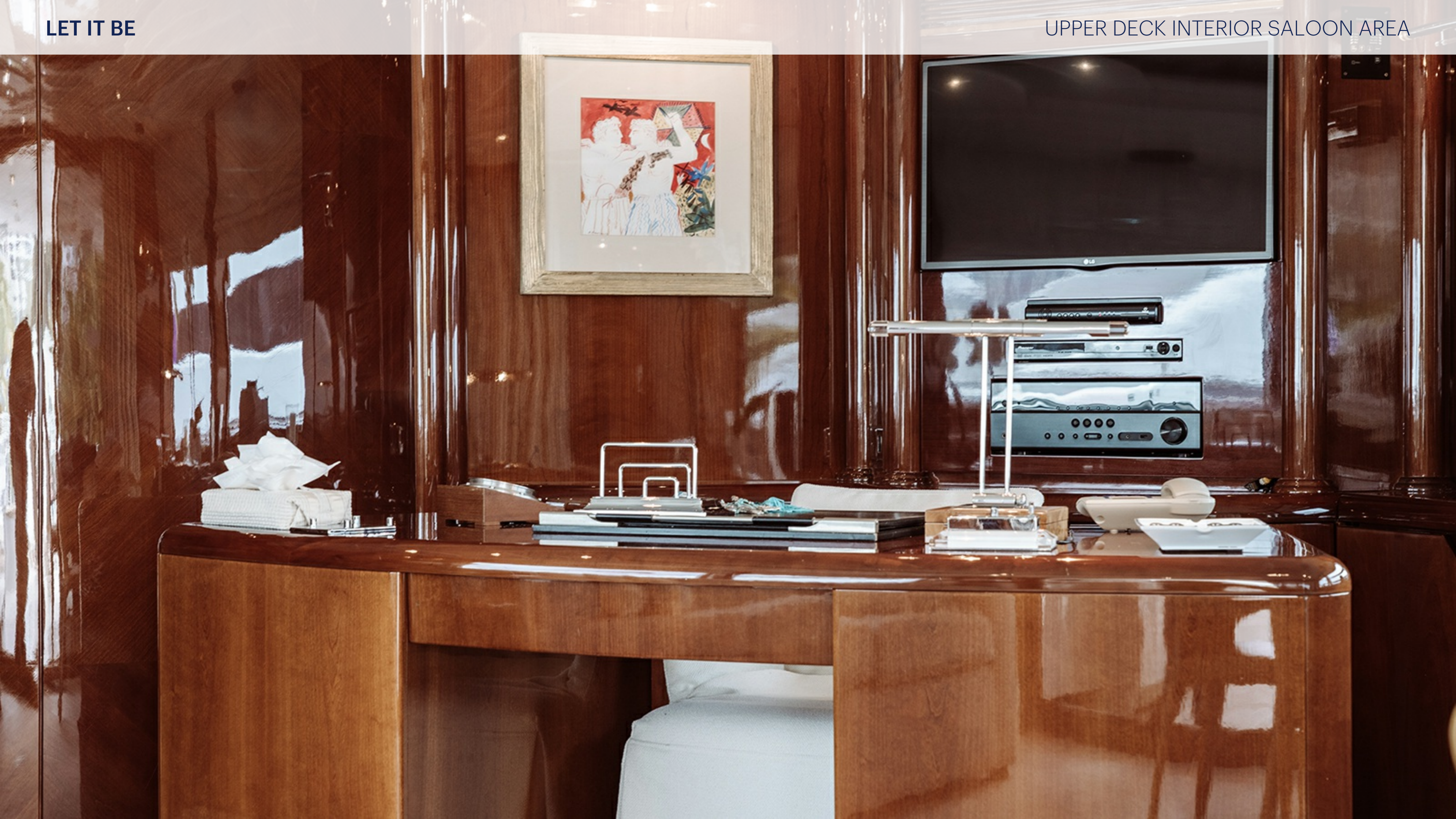


LET IT BE

UPPER DECK INTERIOR SALOON AREA







LET IT BE

UPPER DECK INTERIOR SALOON AREA





LET IT BE

UPPER DECK EXTERIOR SALOON



LET IT BE

UPPER DECK EXTERIOR DINING AREA



LET IT BE

UPPER DECK EXTERIOR DINING AREA





LET IT BE

UPPER DECK EXTERIOR AREA



LET IT BE



SIDE DECK



LET IT BE



LET IT BE

BOW DECK





