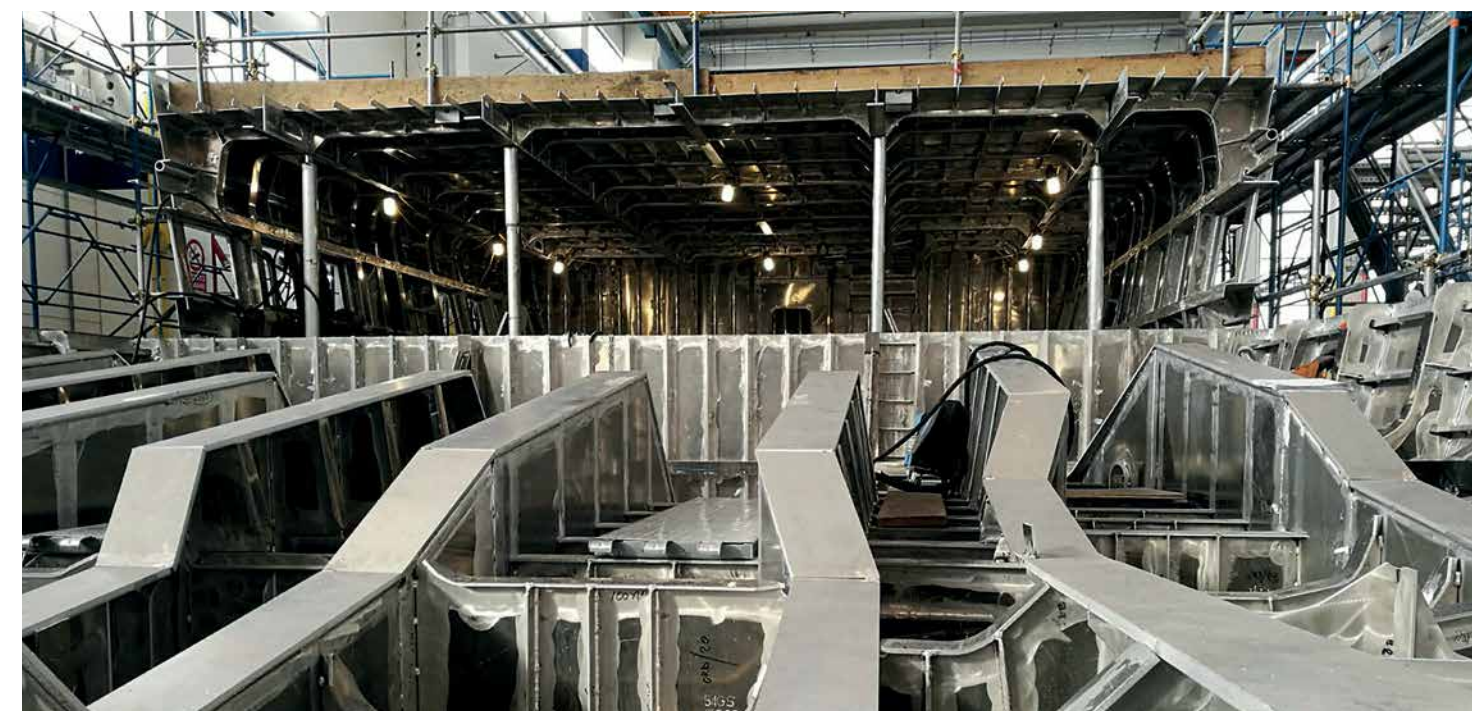


*Da Vinci*



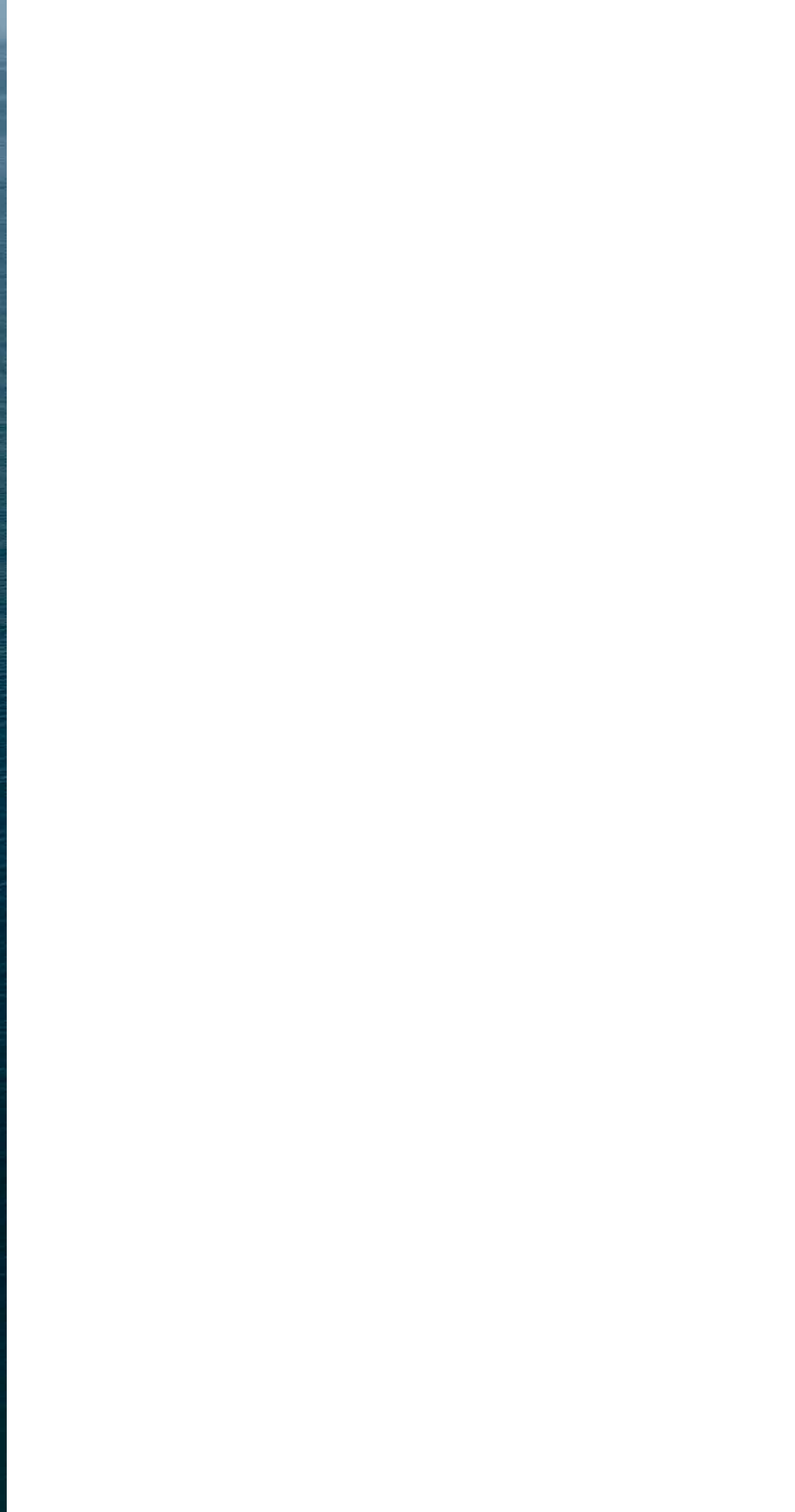
**MANGUSTA** | 165 E

welcome to  
Mangusta  
today



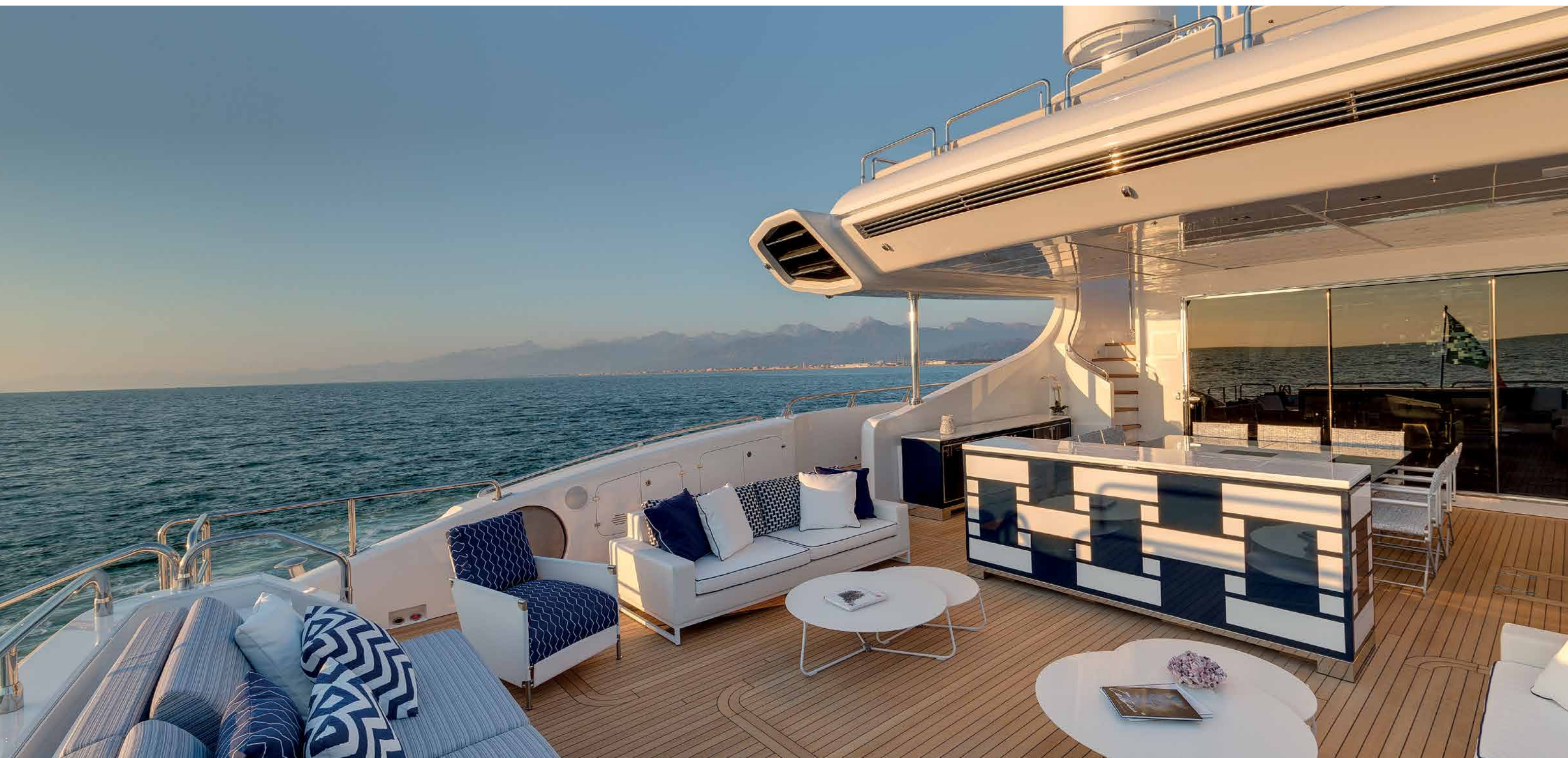
on board  
an icon  
Mangusta 165E



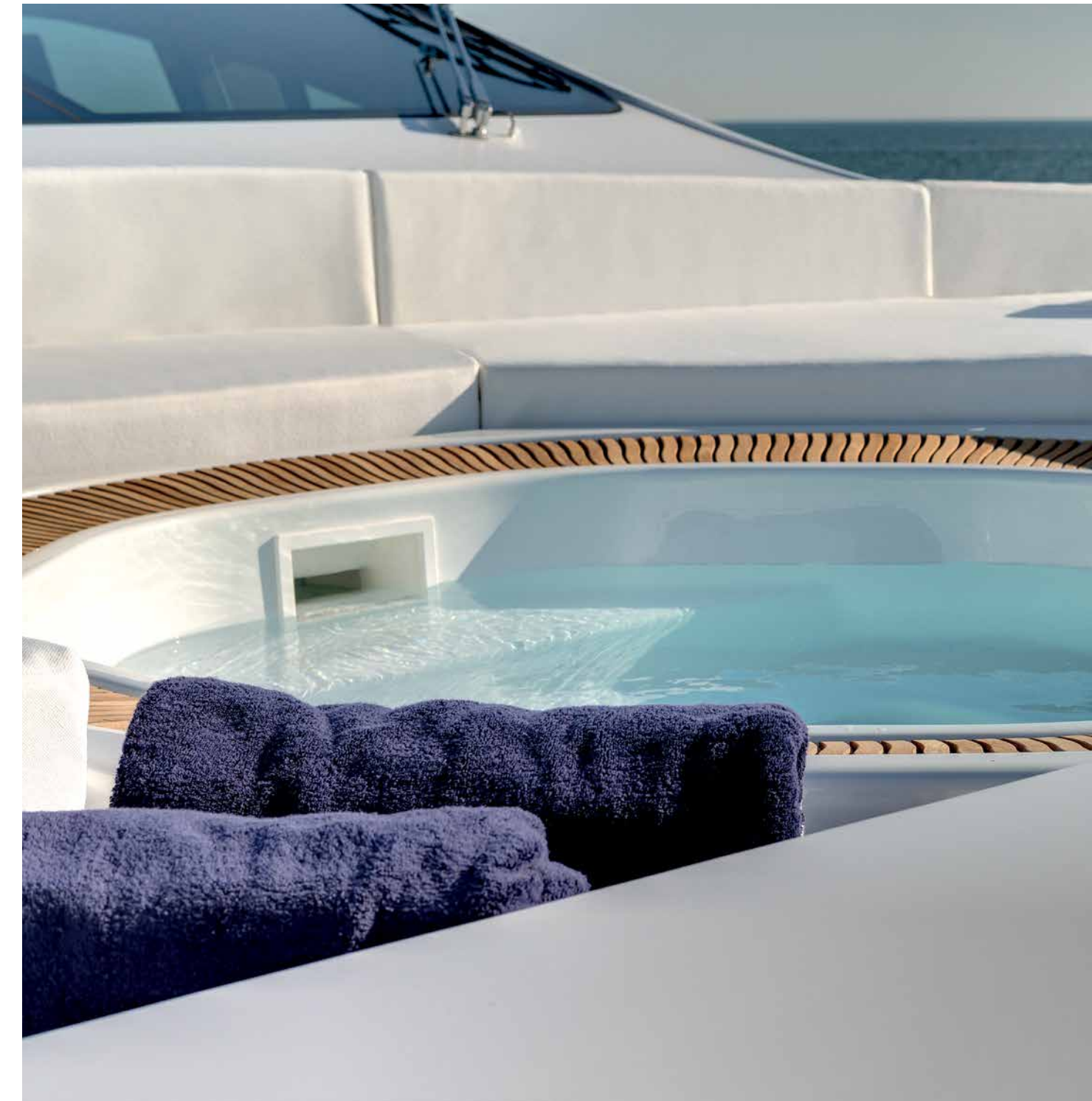












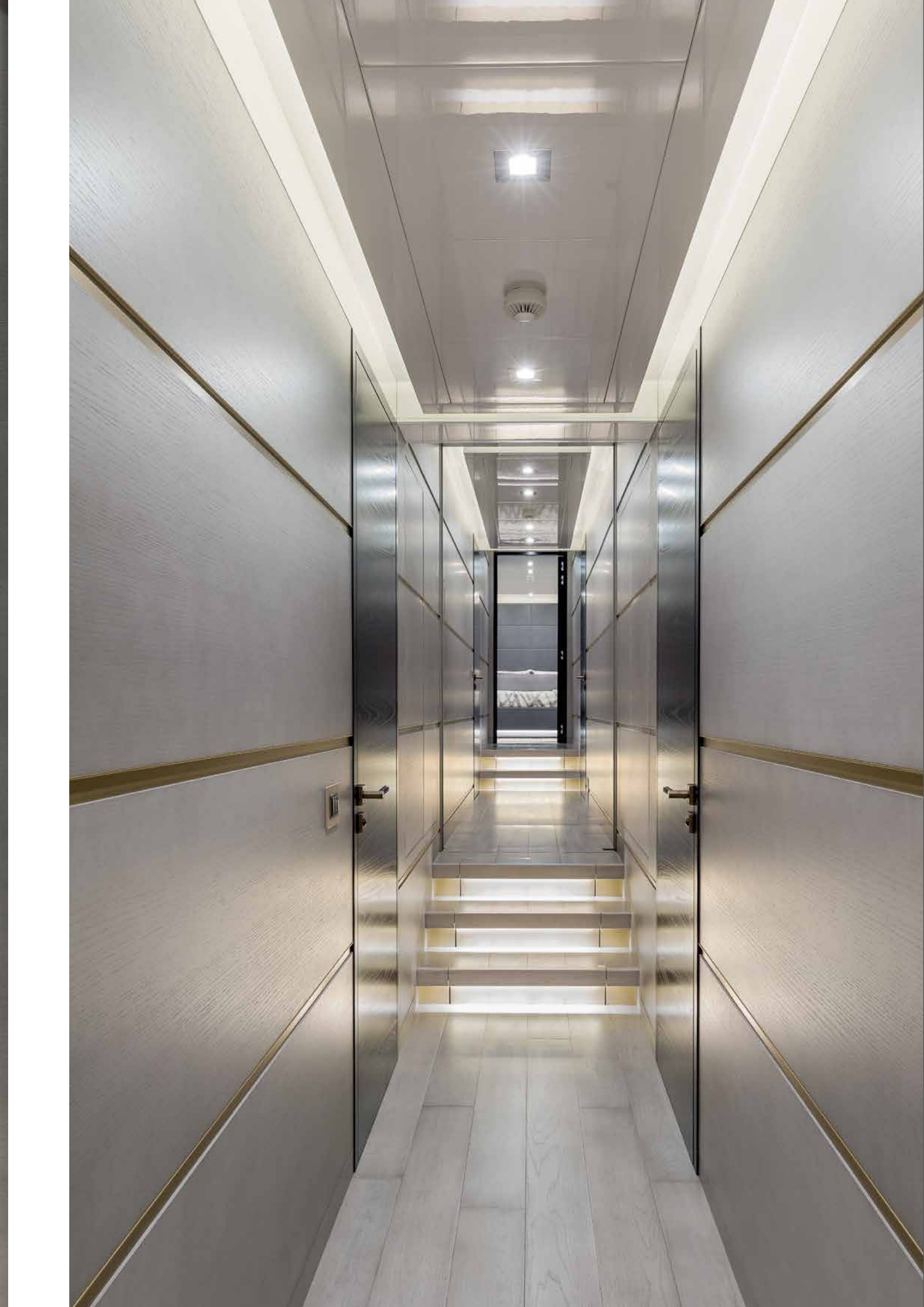
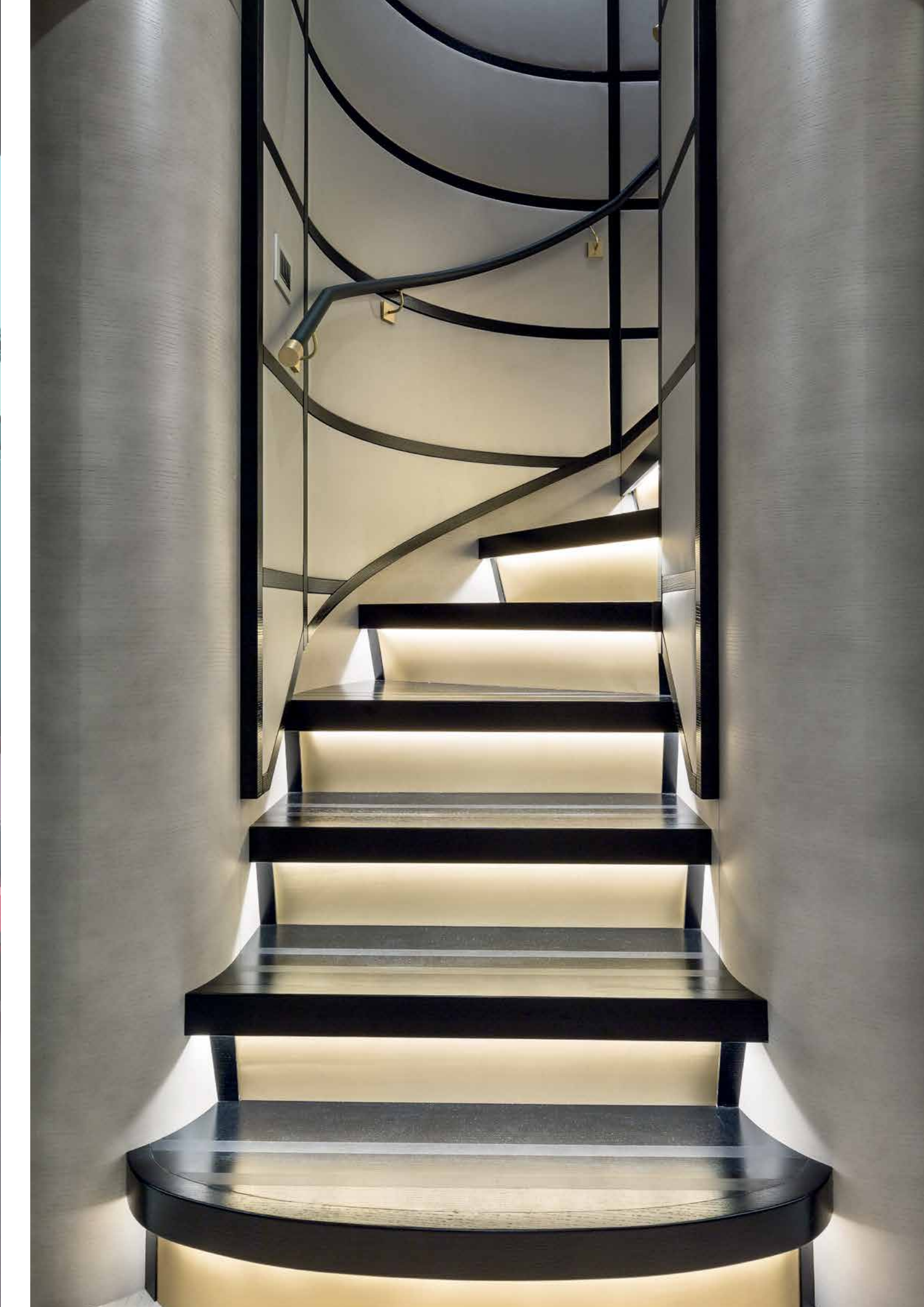






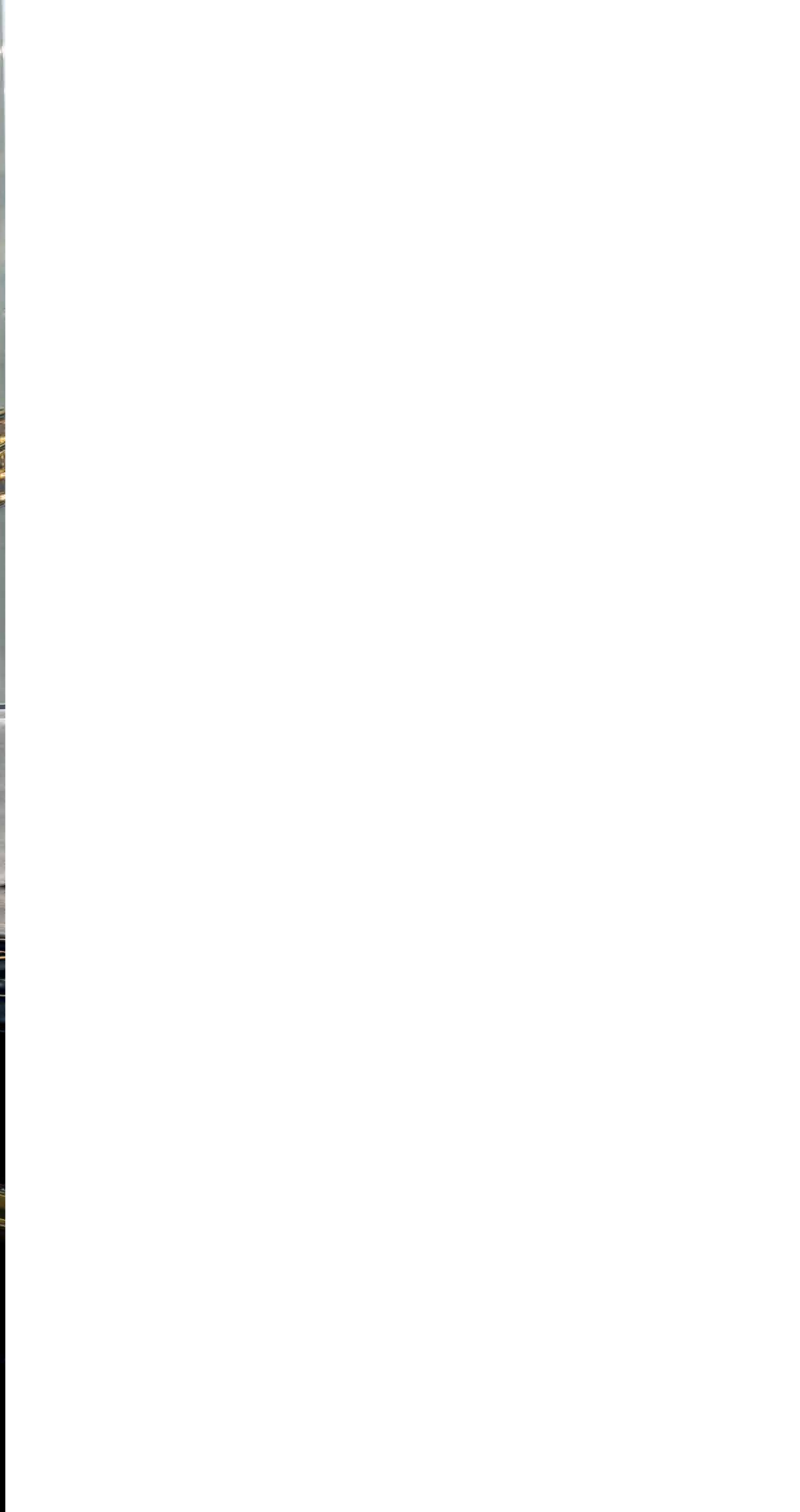


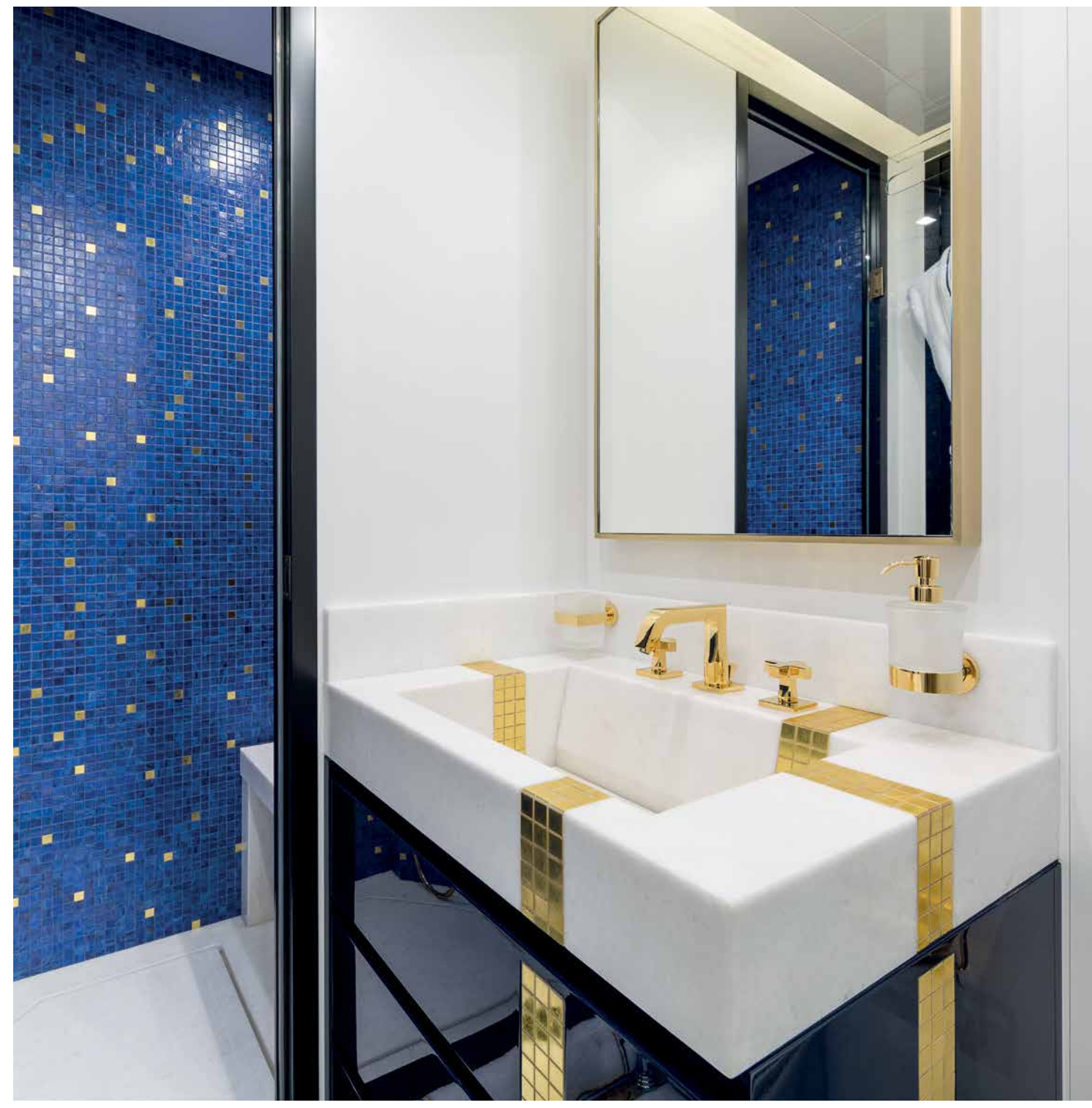
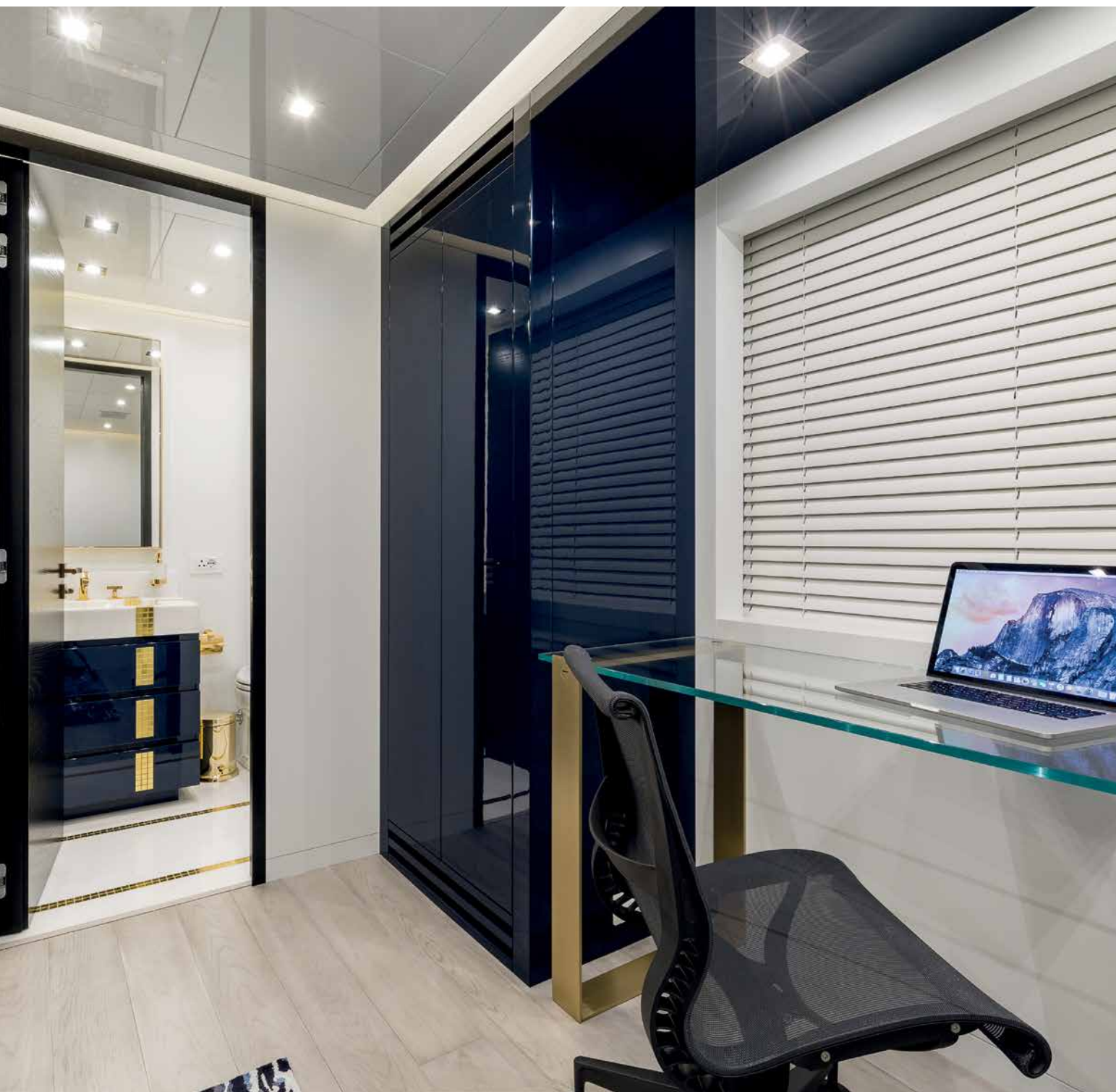




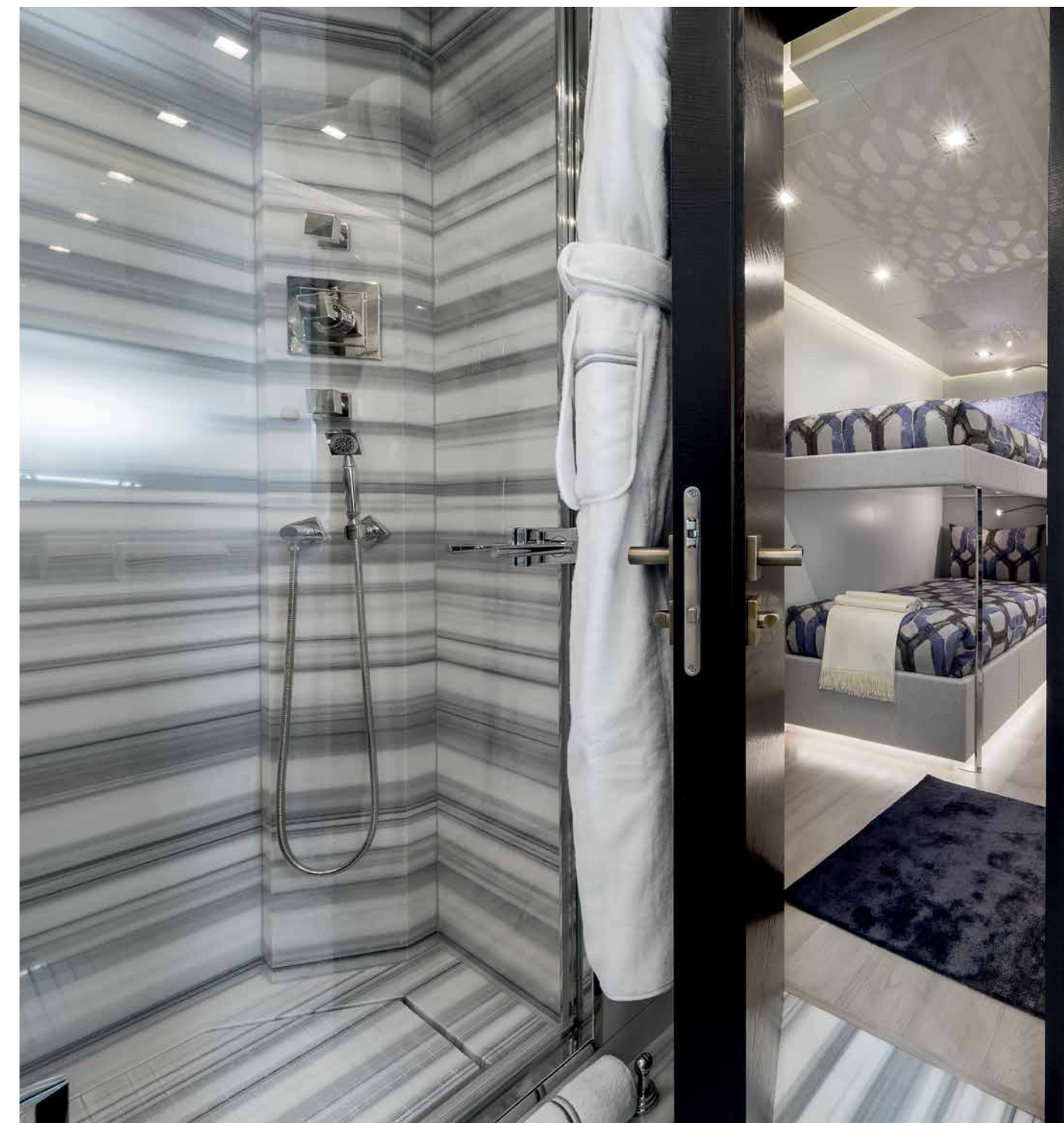
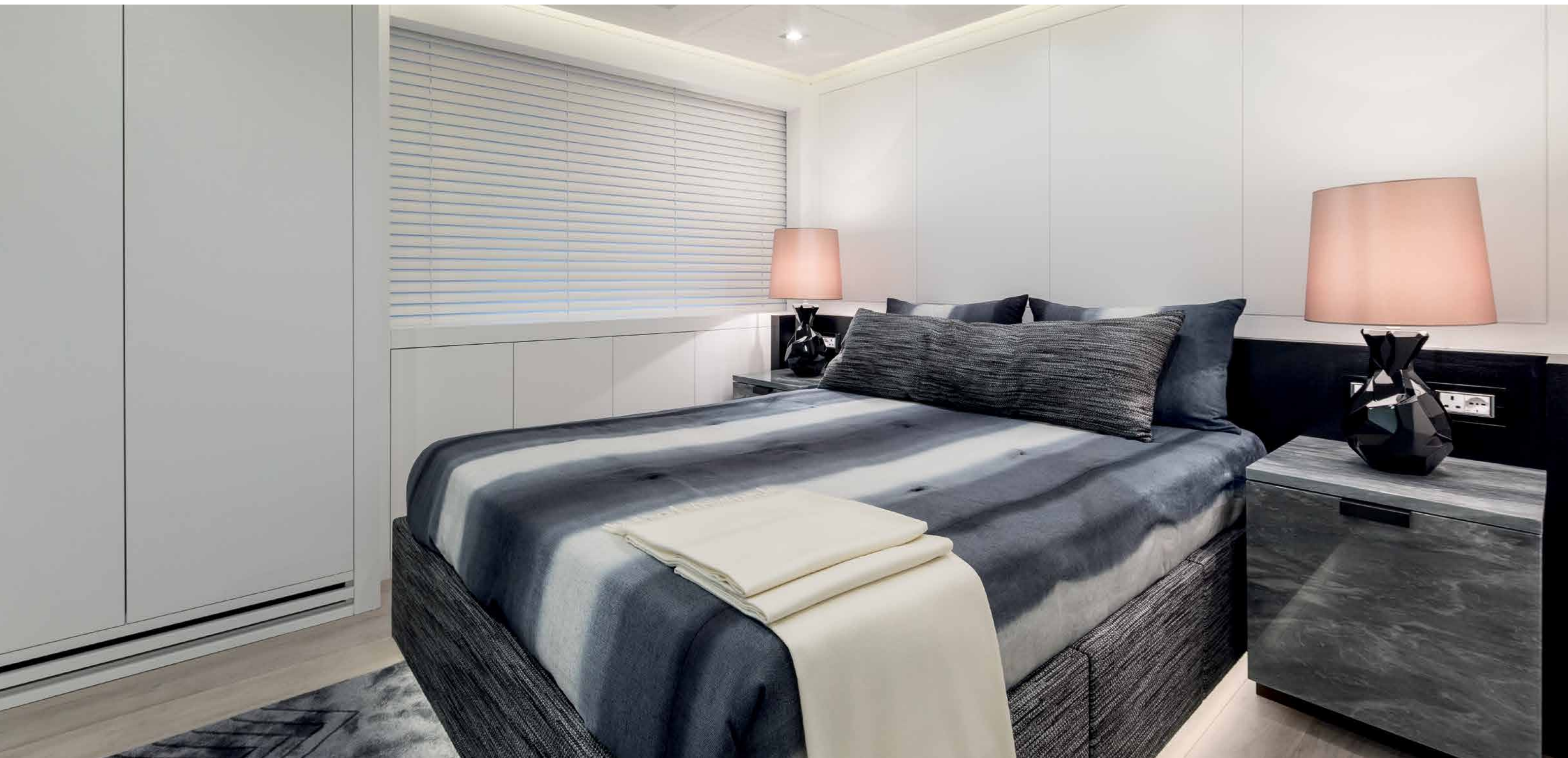


















### TECHNICAL SPECIFICATIONS MANGUSTA 165 E - DA VINCI

#### DIMENSIONS

LENGTH OVERALL	~163' 71"	49.9 M
BEAM	~ 30'18"	9.2 M
MAX DRAFT	~ 6'2"	1.9 M
DISPLACEMENT AT FULL LOAD	~ 628,317 LBS	285 T
DISPLACEMENT AT HALF LOAD	~ 584,225 LBS	265 T
GROSS TONNAGE		485 GT

#### TANK CAPACITY

FUEL CAPACITY	~ 10,567 US GALS	40,000 L
WATER CAPACITY	~ 1,057 US GALS	4,000 L

#### PROPULSION

MAIN ENGINES POWER	4 x MTU 16V 2000 M94 1939 kW (each)
TRANSMISSION	KAMEWA 2 x 71 S4 + 2 x 71 B4
STABILIZERS	4 x SEAKEEPER 35

#### PERFORMANCE

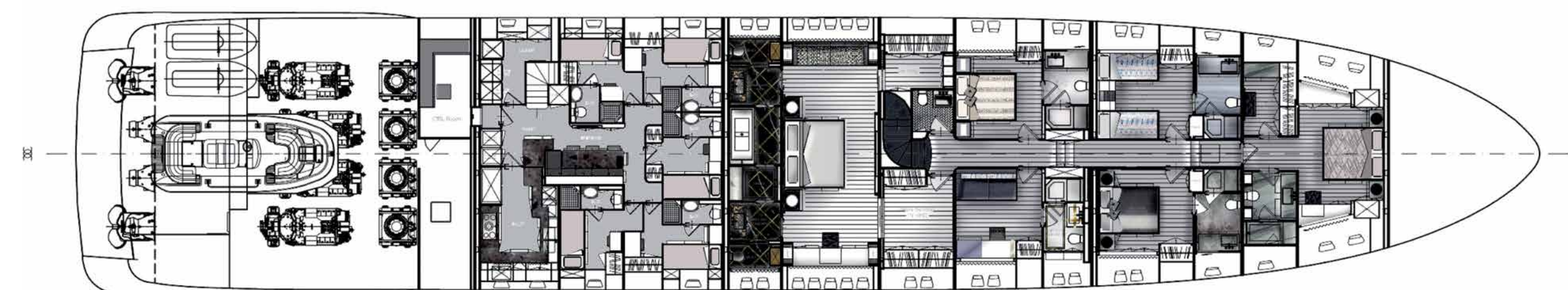
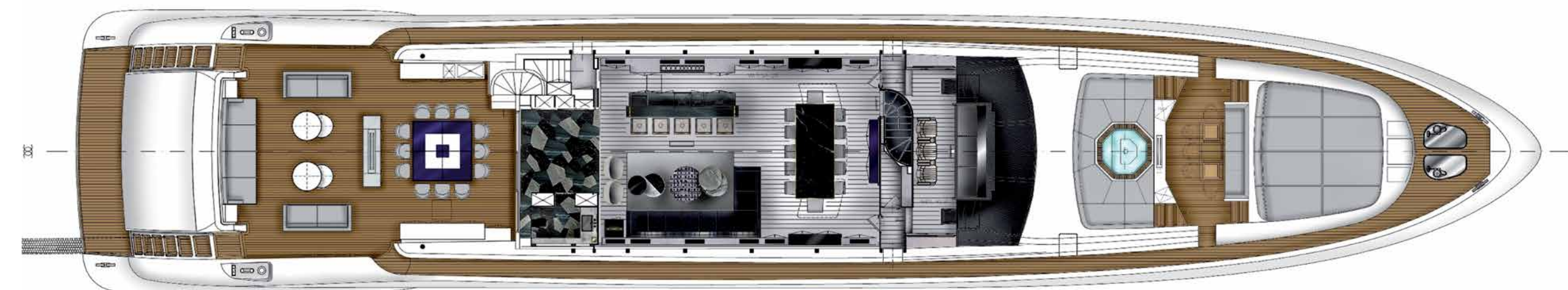
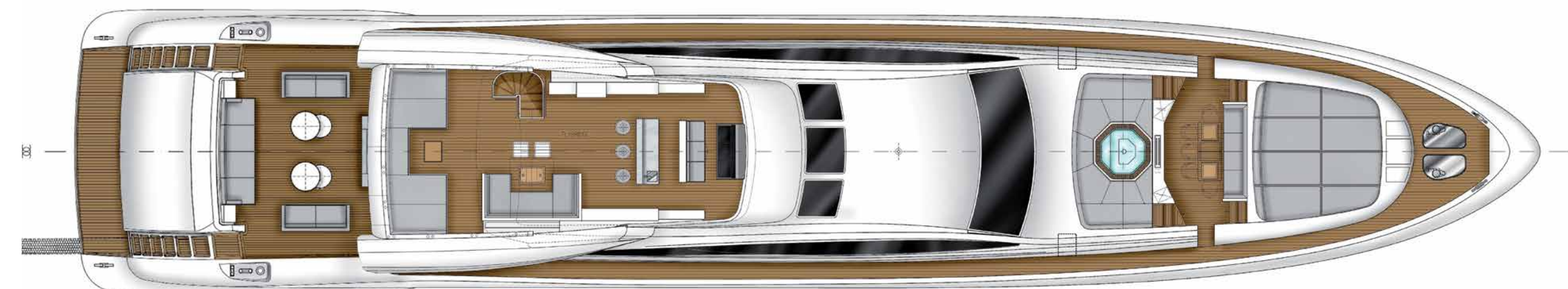
MAX SPEED HALF LOAD	37 KNOTS
RANGE AT ECONOMICAL CRUISING SPEED (20 KNOTS)	~ 900 NAUTICAL MILES

#### ACCOMMODATION

GUESTS	12 IN 5 CABINS +1 RELAX ROOM as per Owner's request
CREW	9 IN 5 CABINS

#### DESIGNERS

EXTERIORS	OVERMARINE GROUP / STEFANO RIGHINI
INTERIORS	MAXINE TISSENBAUM / OVERMARINE GROUP DESIGN DEPT



All information contained herein, including technical and performance data, technical layouts, images and graphic reproductions is provided solely by way of information.  
All technical and/or descriptive information only refers to the features of the yacht shown in this brochure.  
Consequently any binding information which is the seller's responsibility will be provided exclusively in the bill of sale and specific manual.





# MANGUSTA



**MANGUSTA OCEANO**  
43 | 46 | 55 | 60



**MANGUSTA GRANSPORT**  
45 | 54



**MANGUSTA MAXI OPEN**  
94 | 110 | 132 | 165E | 215