

# MOTOR YACHT **LA PELLEGRINA 1**



COUACH **164'**



## THE YACHT



La Pellegrina 1, delivered in 2012 by Chantier Naval Couach and refitted in 2024, is the flagship of the Couach 5000 Fly series, showcasing luxury and sophistication. Her expansive main saloon features full-height panoramic windows, a generous seating area and a refined dining space. The main deck VIP suite offers 180° views, while the upper deck master suite boasts a full-beam layout and private aft deck. Accommodating 12 guests in 6 elegant cabins, the yacht ensures ultimate comfort. Outdoor highlights include a sundeck with a spa jacuzzi, alfresco dining area and a large swimming platform for water activities.

### KEY FEATURES

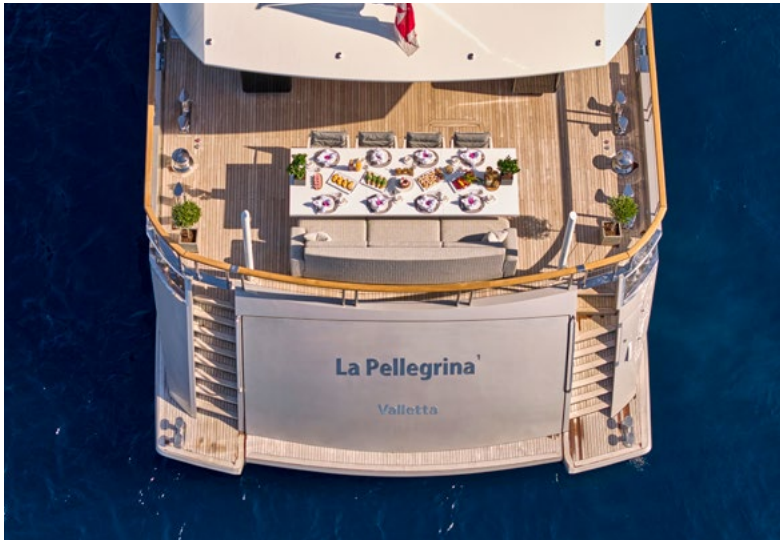
MODERN INTERIORS WITH FLOOR-TO-CEILING WINDOWS / STABILIZERS FOR SMOOTH CRUISING & ANCHORING / MASTER SUITE WITH PRIVATE TERRACE & FITNESS AREA / VIP SUITE WITH 180° PANORAMIC VIEWS / SPACIOUS DESIGN WITH HIGH CEILINGS / FUEL-EFFICIENT CRUISING / ONBOARD GYM & DECK JACUZZI / EXTENSIVE RANGE OF WATER TOYS



M/Y **LA PELLEGRINA 1**



AFT DECK



M/Y LA PELLEGRINA 1



SALOON & DINING AREA



M/Y LA PELLEGRINA 1



SALOON & DINING AREA



M/Y LA PELLEGRINA 1



MASTER SUITE



M/Y LA PELLEGRINA 1

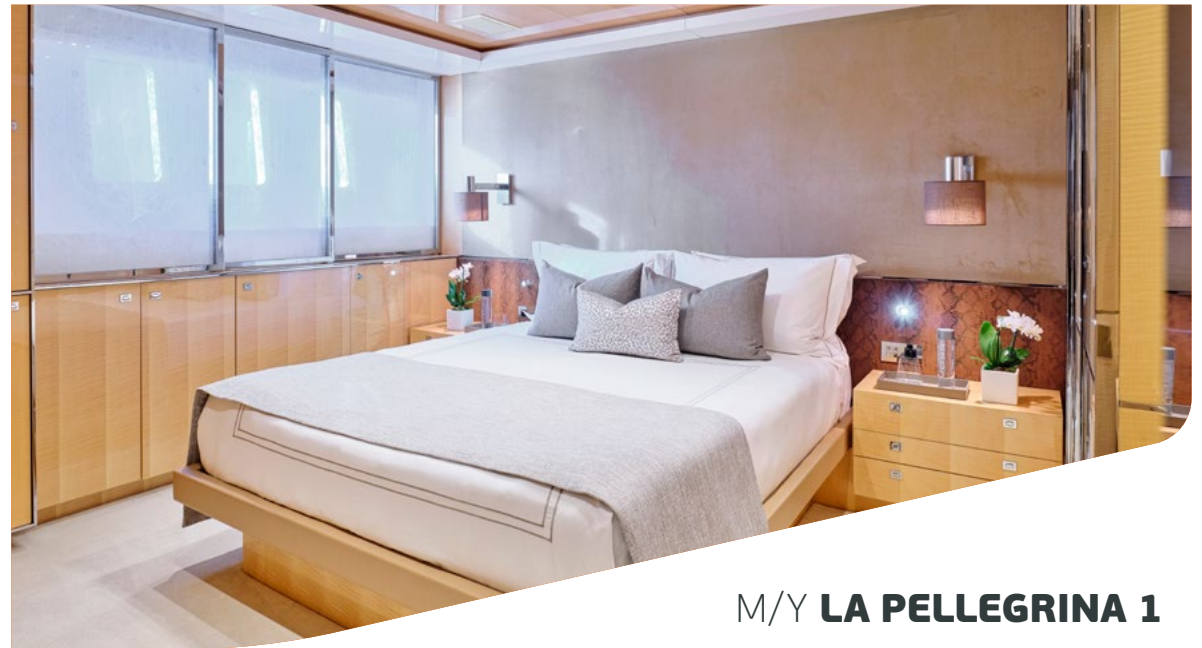




M/Y LA PELLEGRINA 1



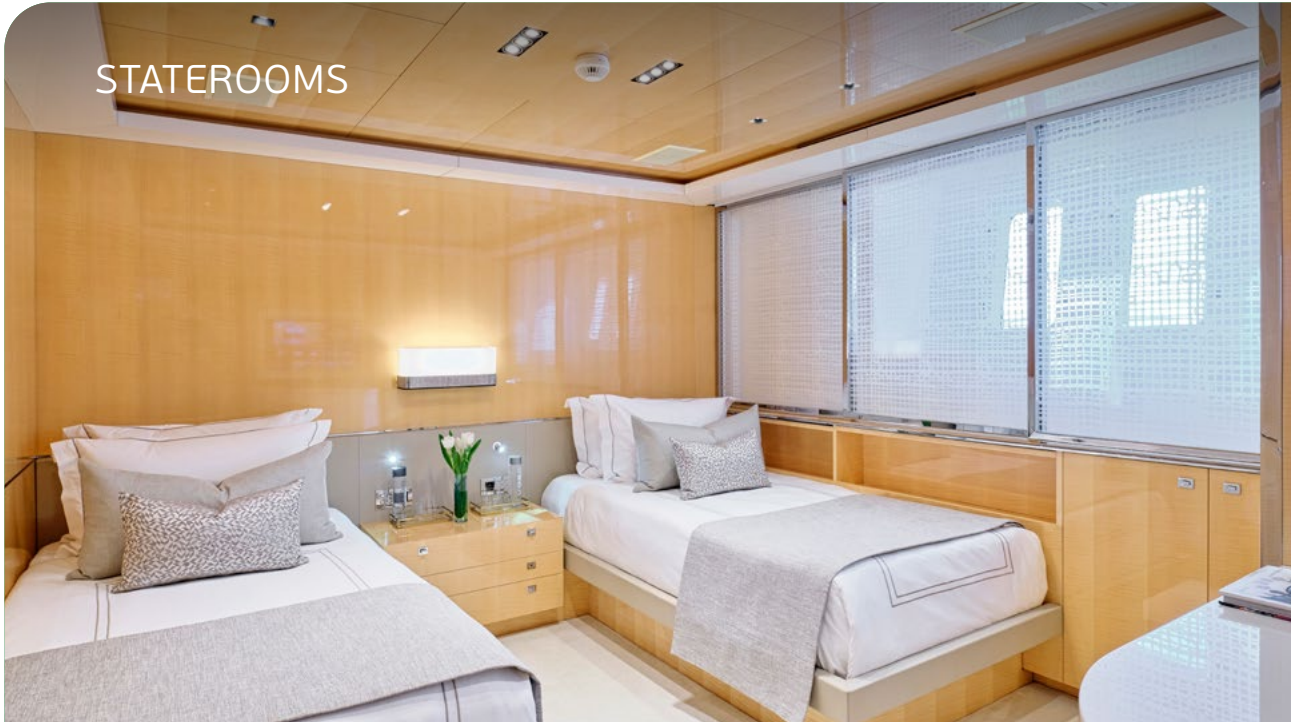
STATEROOMS



M/Y LA PELLEGRINA 1



STATEROOMS





FLYBRIDGE



M/Y LA PELLEGRINA 1



LIFESTYLE



M/Y LA PELLEGRINA 1



BOW SUNDECK



M/Y LA PELLEGRINA 1



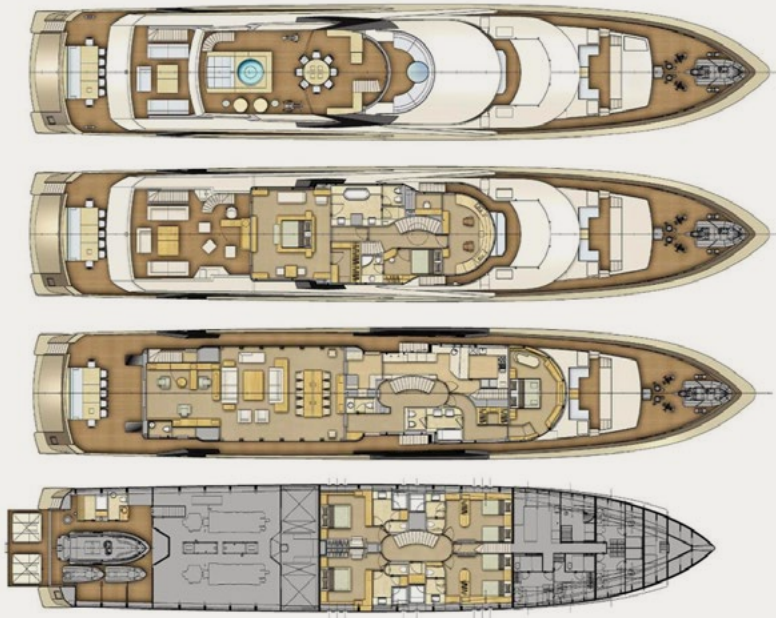
WATERTOYS



M/Y LA PELLEGRINA 1



## SPECIFICATIONS



Builder/Type: **Couach 164'**  
Built/Refit: **2012 / 2024**  
L.O.A: **50,00m / 164,10ft**  
Beam: **9,30m / 30,60ft**  
Draft: **2,50m / 8,20ft**  
Main Engines: **2x 5240hp MTU**  
Generators: **2x 125kw Kohler**  
Cruising speed: **16knots**  
Maximum speed: **26knots**  
Fuel Consumption: **620lt/hr**

**Accommodation:** 12 Guests in 1 Master Suite, 1 VIP, 3 Double and 1 Twin Cabin all with ensuite facilities.

**Crew consisting of 11:** Captain, Chief Officer, Second Officer, Chef, Chief Engineer, Second Engineer, Chief Stewardess, Second Stewardess, Third Stewardess, Stewardess, Deckhand.

**General amenities:** Stabilizers both underway and at anchor, Air conditioning, Deck Jacuzzi, Approved RYA water sports centre, WiFi connection, Gym/exercise equipment, Satellite TV, BBQ & Beach Set up.

**Tender & Toys:** Tender 18' (5.4m) Novurania Equator EQR 600, Crew Tender 3,40m inflatable 25hp Yamaha, 2x Seadoo Spark 90Cv (2020), 2x Knee Boards, 2x Wakeboards, 3x Water skis, 2x F5S Seabob, 2x 10ft Jobe Sups, 3 seat Jobe Banana, 1 Inflatable 2 seat sofa, Fishing Equipment, 2x Jobe Infinity Seascooters, Extension inflatable deck.

M/Y **LA PELLEGRINA 1**