



noor.

---

## description.

---

The only SL102 Asymmetric available on the charter market, **Noor** is the best example of what Italian superyacht yard Sanlorenzo is all about: innovative design and uncompromising luxury.

A truly avant-garde yacht, **Noor's** award-winning asymmetric design has its genesis in Sanlorenzo's partnership with American car design guru Chris Bangle, refined by the masterful eye of Zucco International Projects.

Her ingeniously thought-out lines bear the stamp of innovation and will undoubtedly attract gazes of admiration wherever she goes.


With plenty of toys and an expert and mindful crew, **Noor** is the perfect yacht for a family holiday. Welcome on board!





## cruising area.

---

 Dalmatian Coast

---

Rich in history and with hundreds of islands, the Dalmatian coast surprises everyone who visits.

From deserted coves with translucent waters to waterfront towns with commanding fortifications, Croatia has something for everyone. Go back in time by exploring medieval streets or lounge in beach clubs frequented by the global jet set. Cruise from island to island and feast on freshly caught seafood.

Noor is waiting to welcome her guests in beautiful Marina Frapa, the perfect place to start a Dalmatian coast cruise!

exterior.

---















interior.















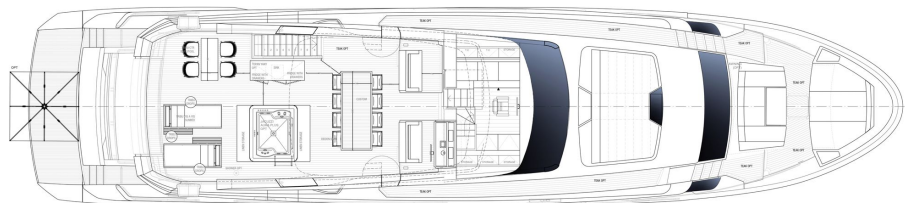






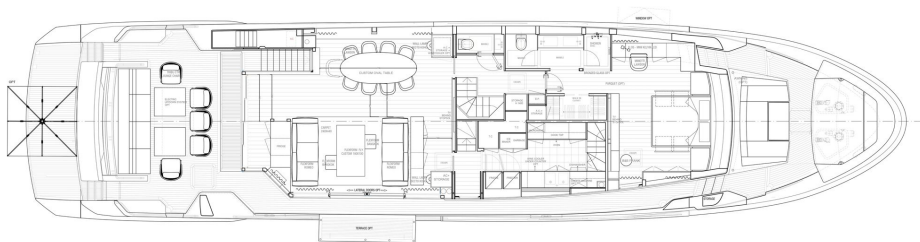


# general arrangement.



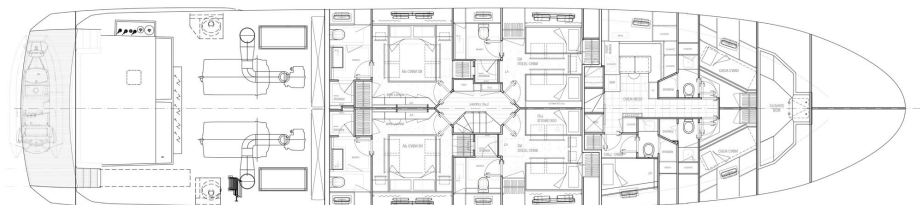
## sun deck.

- sheltered outdoor dining with bar
- games table
- jacuzzi
- sun-loungers
- 4 person sunpad



## main deck.

- comfortable aft deck lounge
- asymmetric design with full height glass
- movie theatre
- main deck master
- private foredeck lounge



## lower deck.

- 2 VIP cabins
- 2 twins (1 convertible and 1 with pullman)
- crew accommodation for 5 crew
- garage for tender and toys

# toys.

---

## Tenders

Williams Dieseljet 445

Brig Eagle 10 with 2x 350hp outboards

## Diving equipment

Wetsuits (7 sizes)

Fins/shoes

Dive compressor on board

Snorkel equipment

## Seabobs

2x Cayago F5SR

## Towables and boards

Omnia Kneeboard

Maddos Wakeboard

Tribal II 2p

Chaser 4Pp

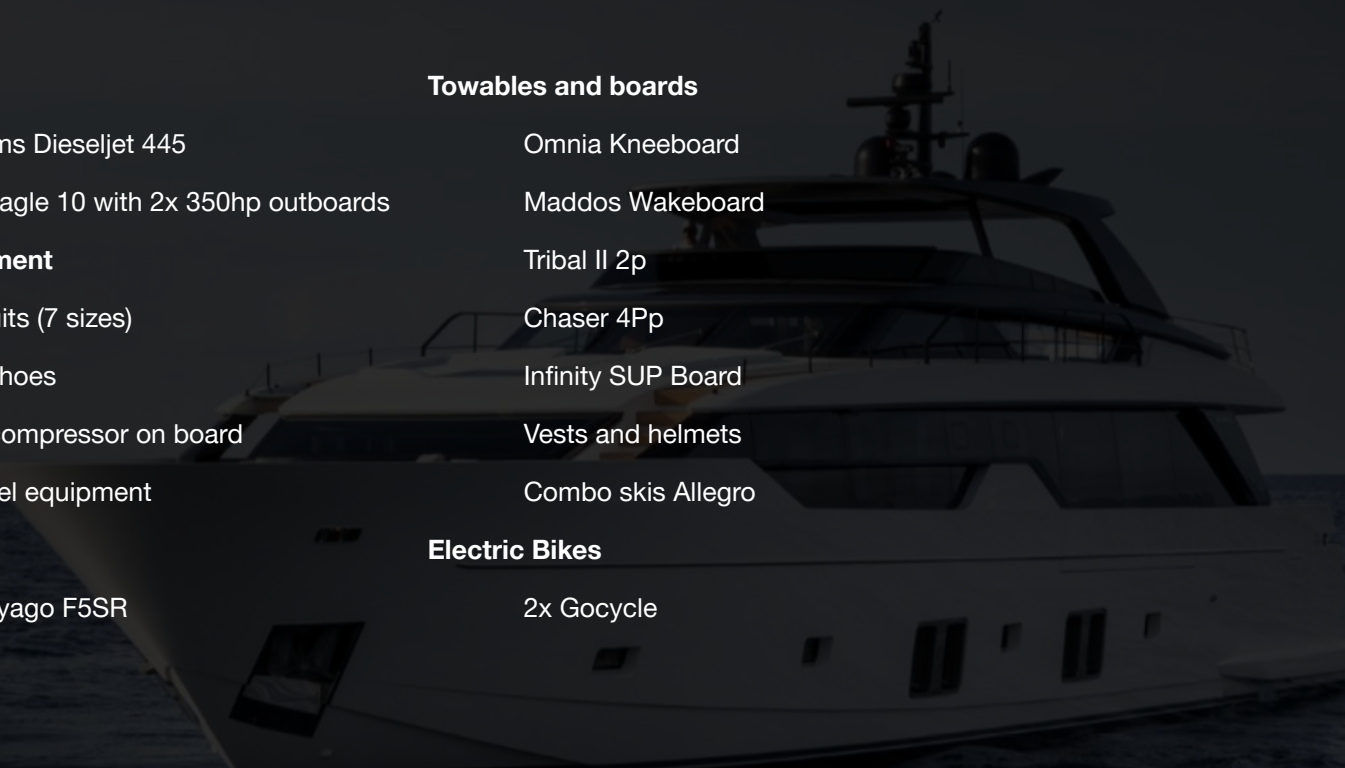
Infinity SUP Board

Vests and helmets

Combo skis Allegro

## Electric Bikes

2x Gocycle



## specifications.

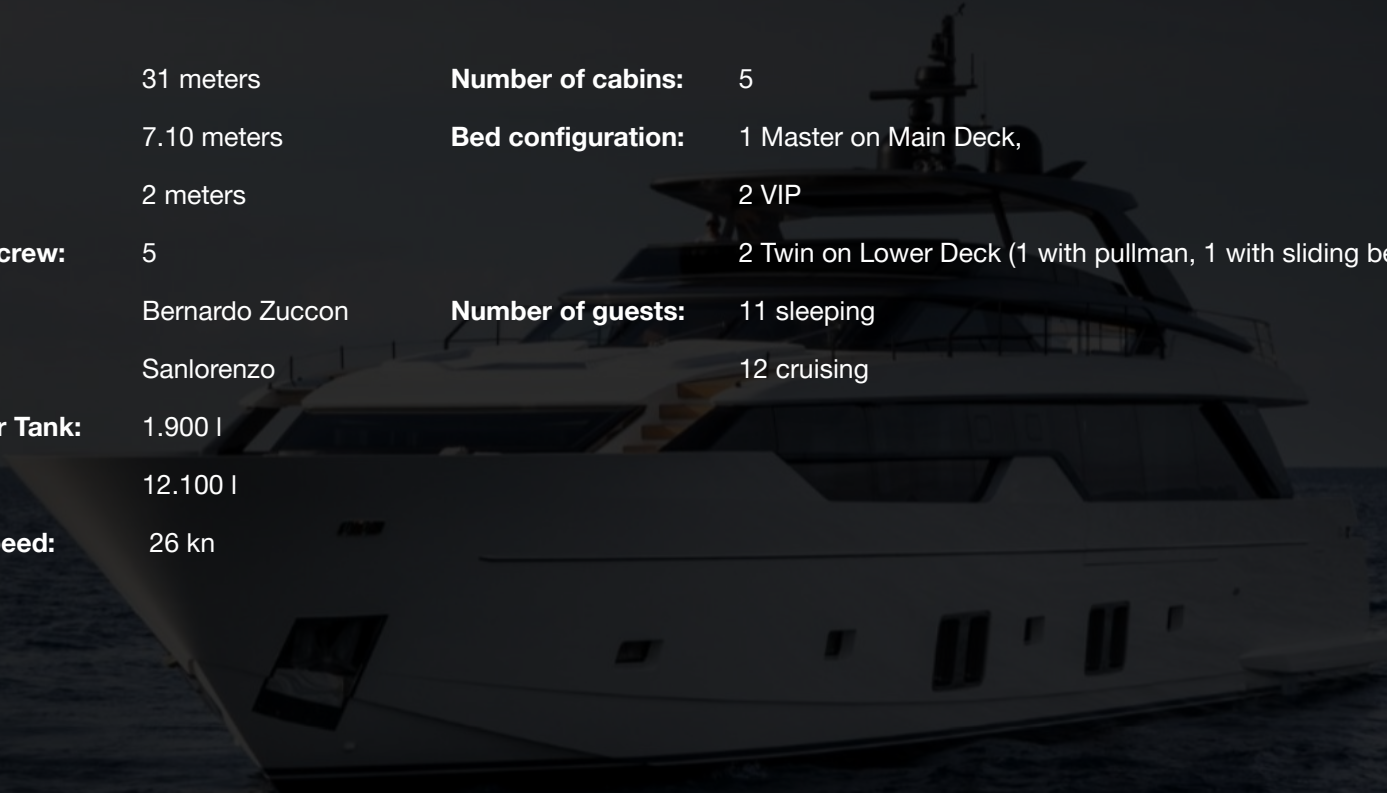
---

<b>Length:</b>	31 meters
<b>Beam:</b>	7.10 meters
<b>Draft:</b>	2 meters
<b>Number of crew:</b>	5
<b>Designer:</b>	Bernardo Zuccon
<b>Shipyard::</b>	Sanlorenzo
<b>Fresh Water Tank:</b>	1.900 l
<b>Fuel Tank:</b>	12.100 l
<b>Cruising Speed:</b>	26 kn

## accommodation.

---

<b>Number of cabins:</b>	5
<b>Bed configuration:</b>	1 Master on Main Deck, 2 VIP 2 Twin on Lower Deck (1 with pullman, 1 with sliding berths)
<b>Number of guests:</b>	11 sleeping 12 cruising



# pricing.

---

HIGH SEASON

€ 115.000 per week

LOW SEASON

€ 105.000 per week

