

LÜRSEN



Fr. Lürssen Werft GmbH & Co. KG
Zum Alten Speicher 11 · 28759 Bremen/Germany
Phone +49 421 66 04-166 · Fax +49 421 66 04-170
e-mail: yachts@lurssen.com · www.lurssen.com

NORTHERN STAR

Northern Star features large outdoor spaces and provides ample seating for open air dining, lounging and sun bathing. In cooler weather conditions a heater in the overhead and glass panels for wind protection ensure that guests feel comfortable at all times.

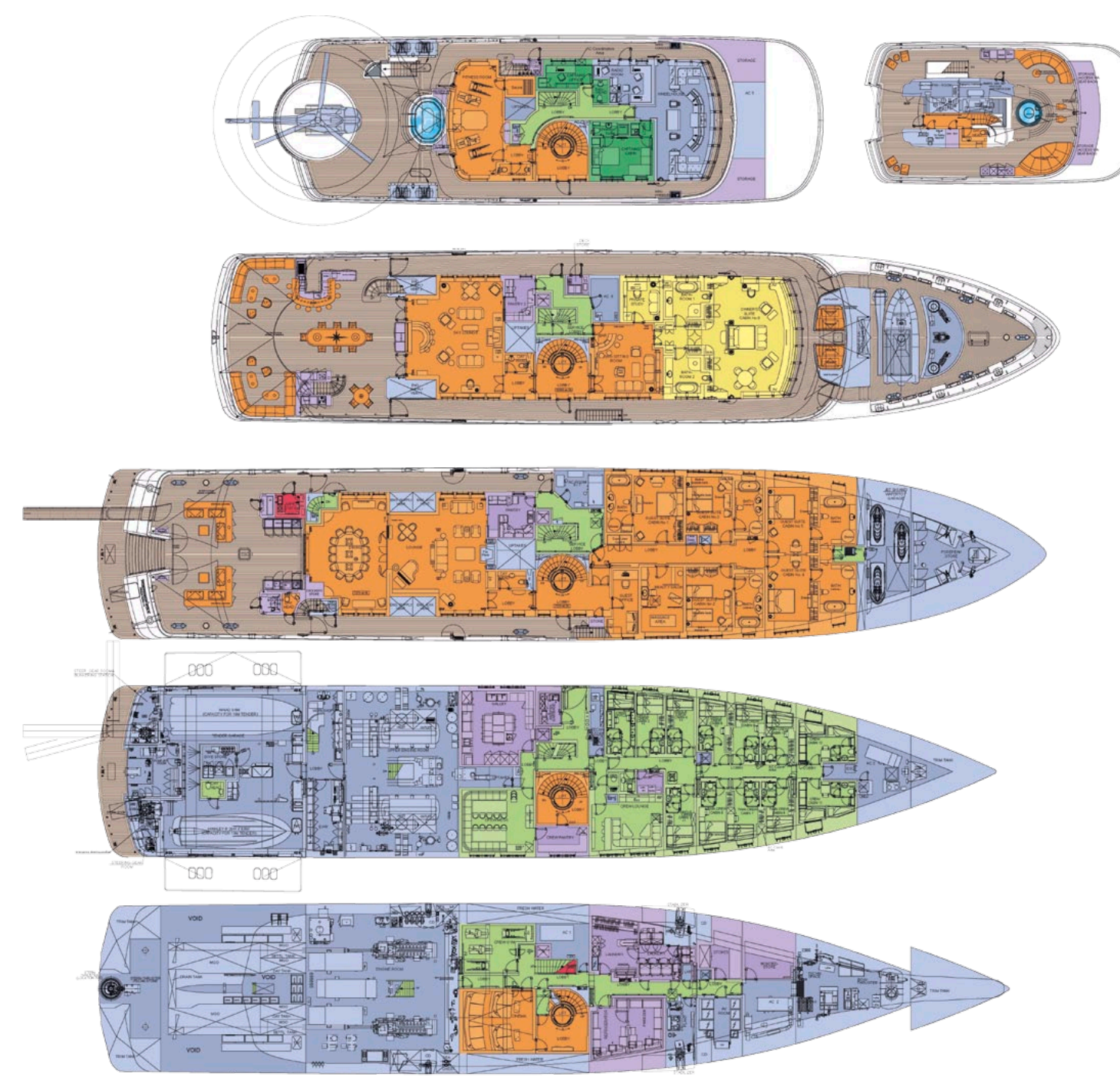


NORTHERN STAR





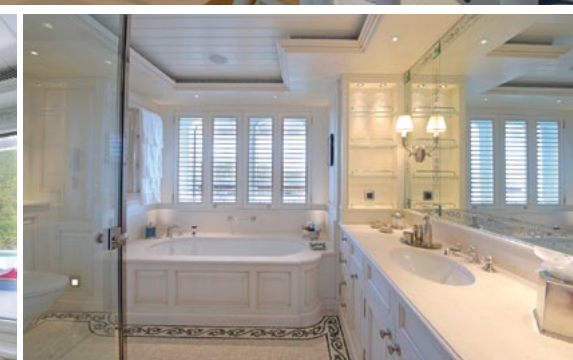
Northern Star is classed for light ice and Espen Oeino has given Northern Star a very traditional appearance. Advanced sound and vibration features guarantee an extremely quiet running of the yacht and zero speed fin-stabilizers reduce wave generated motions when at anchor. Northern Star is a yacht built for pleasure, but above all other considerations she is a yacht intended to be self-sufficient during extended voyages on the high seas and well equipped for whatever she may face.



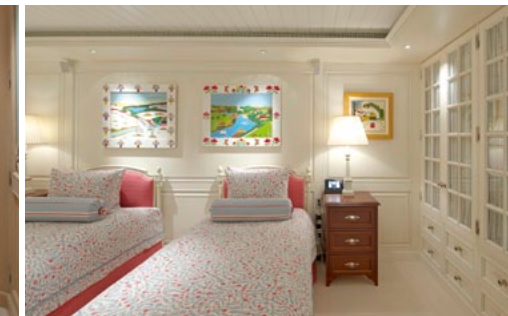
The interior, designed by Pauline Nunns, can best be described as a grand country home, which is executed in every single detail and dominated by light airy and comfortable traditional interiors with lots of wall space.



The main deck not only hosts the main salon and dining areas, which are executed in a warm red tone, but 5 guest suites, as well. The decoration of each cabin is different but all is held in light colours. The beauty and massage room next to the guest cabins is a much sought-after spot onboard.



Most of the upper deck is dedicated to the owner's suite which offers most spectacular panoramic views. The sky-lounge on the same deck is a masterpiece in its own right and has the same light-blue and white colours as the owner's suite.



Specification M/Y "Northern Star"

Builder / Year	Lürssen Yachts, 2009	Emergency generator	1 x Caterpillar C-9 DITA 162/1500, 180kVA
Designer exterior	Espen Øino Naval Architects, Monaco	Stabilizers	4 Quantum zero speed
Designer interior	Pauline Nunns, London	Bow thruster	Brunvoll, 300 kW
Length over all	75,40 m / 247'4"	Pump jet	Schottel, 300 kW
Length in waterline	66,70 m / 218'9"	Fuel capacity	240.000 l
Beam	13,50 m / 44'3"	Fresh water capacity	40t
Draught	3,80 m / 12'5"	Fresh water makers	HEM, 2 x 25.000l / day
Construction material	Hull: steel, Ice class 1-D/superstructure: aluminium	Air conditioning	Heinen & Hopmann
Speed	17 knots	Class	LRoS ÷ 100A1, SSC Yacht mono, G6 ÷ LMC UMS Ice class 1-D, MCA LY2
Range	7.000 nm at 12 knots	Accommodation	
Main engines	2 x Caterpillar 3516 DITA-SWAC, 2000 kW / 1600 rpm	Owner / Guests	6 cabins for 12
Generator sets	2 x Caterpillar C-18, each 383 kW / 350 kVA 1 x Caterpillar C-18, 492 kW / 440 kVA	Crew	13 cabins for 26