

O'Lion

Cruising through seas of wonders.



A project develops when a passion for the sea meets the elegance of exquisite design and cutting-edge technology, in which style and comfort blend together, creating a yacht with unique charm: **O'Lion**.





Making room for style.

The megayacht **O'Lion** merges the balance and simplicity of her external lines with the refined elegance of her interior furnishings. Fifth hull in the Navetta 43 displacement line in composite material, this ship features both the indoor spaciousness and large outdoor areas typical to it. **O'Lion** was produced by the Ancona shipyard on a project drawn up by the technical and design offices of CRN in association with Studio Zuccon International Project, which dealt with the external and internal layouts. She can accommodate 10 passengers and 9 crew members.





Exclusive comfort amidst art and technology.

Amongst the warm shades of the “Canaletto” walnut, the only wood used aboard, and the radiant shades of the leather clad ceilings and Tai Ping carpet, this yacht is a perfect balance between past and future, history and technology. **The** technology finds its expression in myOlos, an integrated system of entertainment, information and home automation. Developed through a partnership between the shipyard, Videoworks and Intel it guarantees CRN clients on-board functionality and cutting-edge user-friendly technology. Using a simple iPod, this system makes it possible to manage and control all entertainment functions (including audio and video on demand), as well as air-conditioning, on-board video surveillance, and the control of lights and curtains.

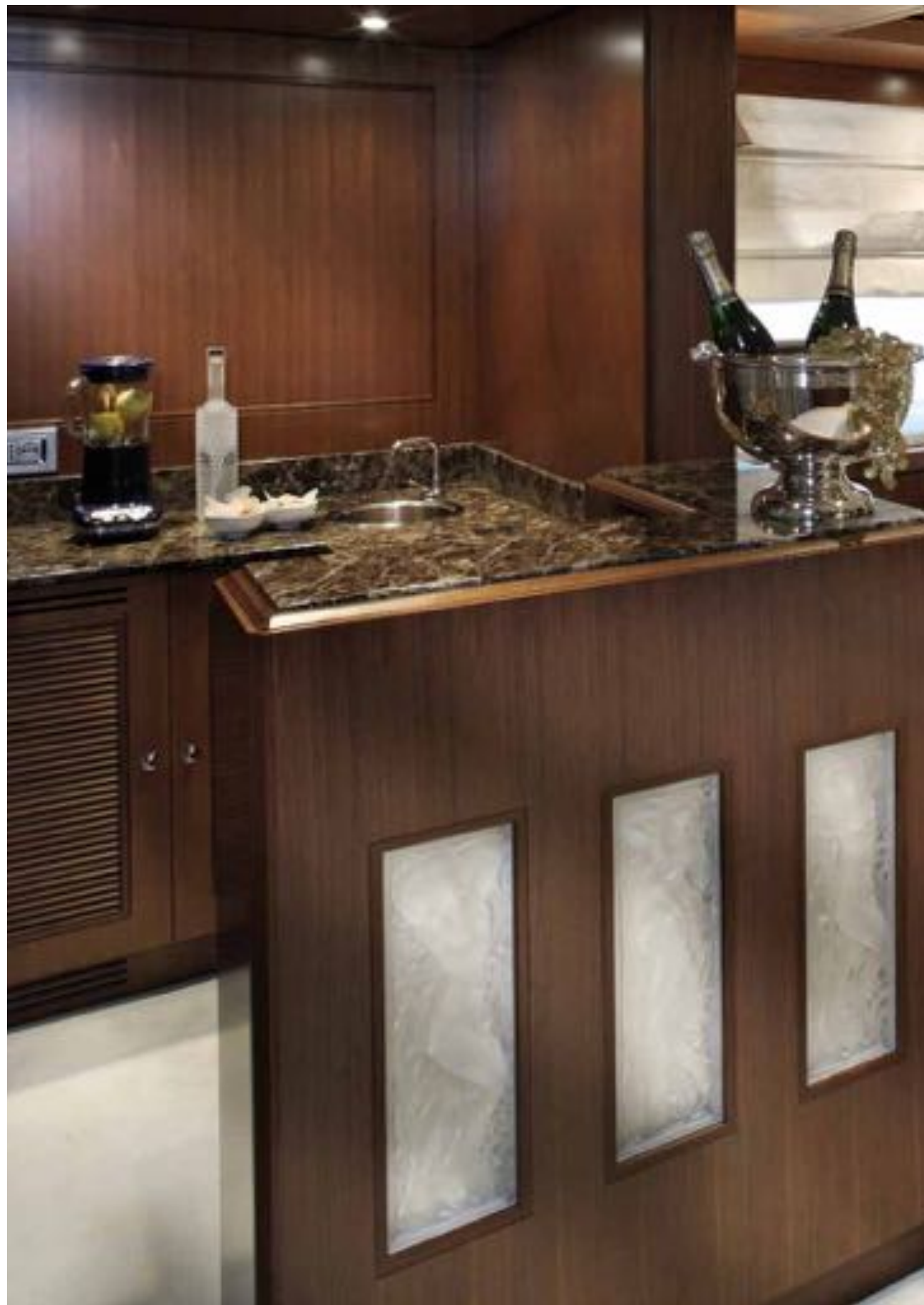
O'Lion blends total comfort with a classical style whose unique, essential design, moves away from tradition to create smart, modern environments.

Main deck, classy experience.

Guests going onto the **O'Lion's** main deck are welcomed into the comfortable stern cockpit fitted out with small rattan divans and armchairs in natural colours with coordinated cushioning.







Upon entering the main salon, the lighter colours of the ceiling become predominant, as well as those of the valuable Tai Ping carpet and smart divans, whilst the warmer shades of the wainscoting in interwoven natural fabrics stand out.

The painstaking care taken over each and every detail makes this environment a jewel of style and taste.

The lamps and backlit inserts of the bar area have been enriched with valuable Lalique crystal.

High quality, undulating decorative panels in bronze-coloured wood decorate the two large cupboards in the centre of the main salon, in which all the table accessories have been stored. All accessories have been produced by well-known Parisian company Christofle.





Style and functionality merge together in the salon. An electric Venetian blind door splits this area in two, creating a large living area on one side, in which guests can relax and converse in a tranquil environment; and a smart dining-room featuring a large crystal table with a leather clad pedestal which seats 12 on the other. In more detail, the observer's eye is immediately caught by the important, signed canvases mounted in valuable frames which decorate the bulkheads and mark off the dining area.

Heading from stern towards the bow of the main deck, guests will pass an area designed for use with the Owner's private rooms. The natural shades of the fabrics and upholstery are the same as those on the rest of the yacht. The Owner's taste is revealed here, as indeed in the salon, in the attentive choice of materials and painstaking care over detail: from the low headboard in leather interwoven with the decorative fabrics produced by Loro Piana, to the woven leather chest of drawers, each and every detail is proof of a simple, elegant style.







To the left, the Owner's bathroom, produced in classical polished heated travertine marble, featuring a central shower cubicle and jacuzzi tub, embellished with taps and fittings with Lalique crystal knobs.



Ever present, as is indeed the tradition aboard CRN megayachts, is the exclusive balcony offering a sea view, a privileged area in which to fully enjoy the exclusive panorama in complete privacy. A spacious walk-in closet and private study complete the Owner's suite.



Lower deck, the breath of the sea.

Four spacious cabins, two VIP cabins with double beds and two guest cabins with twin beds are located on the lower deck. Here too, style is dictated by minimalist elegance and attention to detail.

The wainscoting and fabrics in each room have been produced by Loro Piana, whilst the headboard was chosen in a valuable, creamy coloured leather. A conveniently large walk-in closet and private head in polished Cedarstone marble complete the cabins, which are ideal for offering guests exclusive comfort and privacy.





Natural colours, a linear design, inviting spaces: the simple, comfortable style of O'Lion extends to the guest cabin areas.





The stern of the lower deck of **O'Lion** features a solution which has now become typical to CRN hulls. A sophisticated hatch which can be opened, once the engines are off, turns the stern into an inviting small beach club, devoted to well-being and the pleasure of outdoor life. The Owner has also had a cedar Klafs sauna fitted on the deck area and a gym with Technogym® equipment for fitness enthusiasts.







Upper deck, moments to frame.

A large, circular luncheon table dominates the stern cockpit of the upper deck, followed by comfortable structural divans astern where those aboard can enjoy relaxing outdoors, enjoy the view during a voyage or take advantage of the TV with its “up and down” system fitted in the side unit.

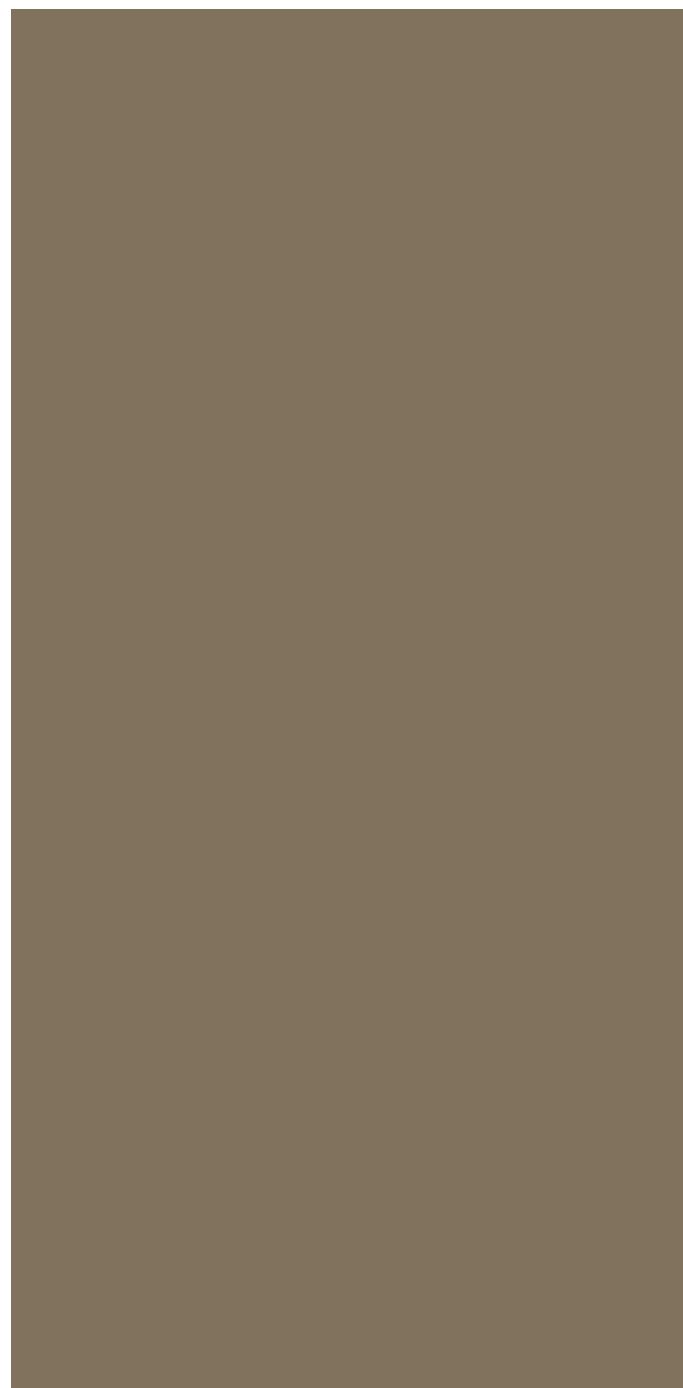




The pleasant panoramic salon is where guests can experience on-board socialising to the full. The Cedarstone marble fireplace immediately catches the onlooker's eye. To complete the setting, there are two large customized divans and two Promemoria armchairs, all in light beige fabric, which furnish the salon along with the coffee table and "Canaletto" walnut console. These free standing pieces contrast perfectly with an environment where shades of brown prevail along with the crossed veining of the checked carpet.



To the left, the smart panoramic salon featuring a Tai Ping rug with refined patterns dominated by light blue and shading, taken up again in the cushions decorating the divans. To the right, the pleasant warmth of the fireplace and sophisticated, high-tech system, two of the souls of O'Lion which contribute to making her such a comfortable yacht.





Beyond the sky lounge is the lobby. Guests can descend from here to the main deck using either the staircase, the walls of which are clad in leather in keeping with the natural shades of the yacht, or the lift, with its crystal walls and polished Emperor marble flooring. Subsequently there is the captain's cabin, adjacent to the full-beam pilot house set at the far bow of the upper deck, as always on the CRN Navetta 43 line.







Sundeck, at the borders of the sky.

The sundeck provides the largest space for enjoying the sun and sea breeze. In order to make full use of its potential, an extension of the stern area has been studied, making it possible - for the first time ever - to fit a 43 metre yacht out with a helipad.



The central area is fitted with a round wooden table and the bar counter of the covered part, ideal places in which to enjoy life on-board to the full.



Lovers of the regenerating effects of a jacuzzi can take advantage of the tub fitted at bow, an area featuring a comfortable asymmetric, semi-circular relaxation area, divans and sunbeds. A handy food lift and a second driving position - meaning the yacht can also be driven from the highest deck - are located on the left hand side.





Comfort in all directions.

Minimalism and rationality are the guidelines followed for fitting out the well-equipped galley aboard **O'Lion**. Professional Siemens and Miele appliances and a small wine cellar provide all which is necessary for Owner and guests to enjoy the excellence of top cuisine wherever they are.

The captain's cabin is near the wheelhouse on the upper deck. The living quarters for the chef and crew are located next to the bow area of the lower deck, which is also where their dinette and cabins are located.





Spending time on board **O'Lion** is pure pleasure, which is also guaranteed by the twin Caterpillar C32-C engines located in the engine room on the lower deck. Thanks to these, the yacht sails at a cruise speed of 13 knots and can reach a top speed of 15.5. Two jet skis are housed at bow of the main bridge together with two canoes and two sea bobs. The latter are kept in the garage with a 21' Castoldi tender, and complete the water toys of this splendid jewel.

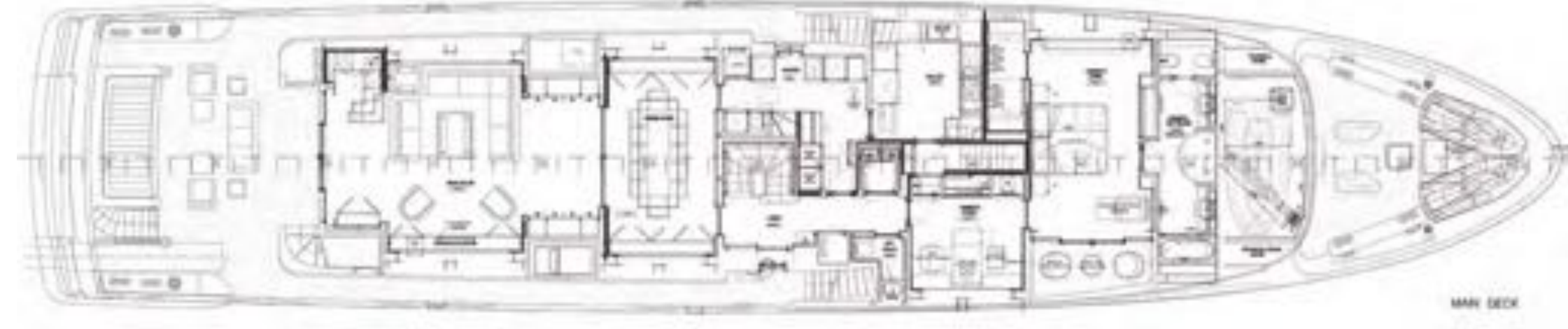
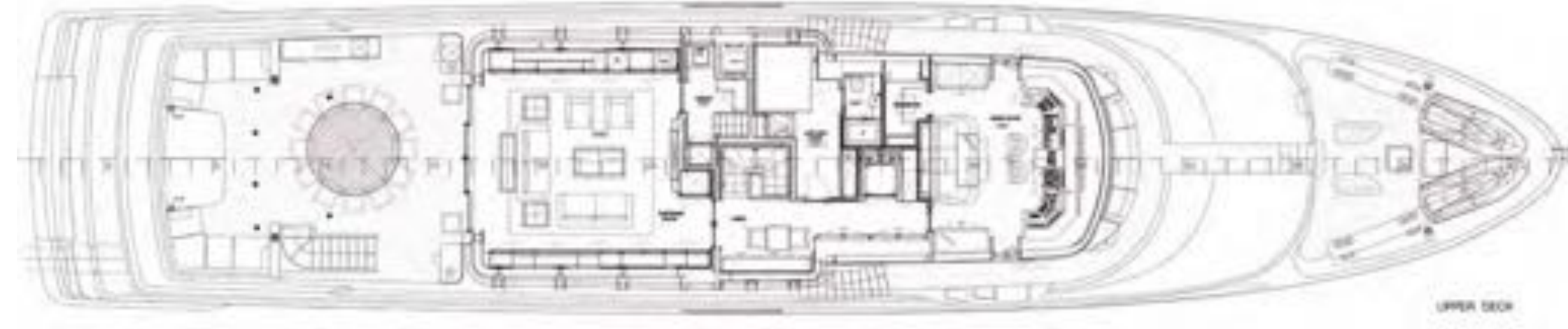




Technical data

CRN 43

Material hull / Superstructure	Composite material (GRP)	Water tank	7'000 lt / 1'800 gallons
Type	DISPLACEMENT Hull, bulbous bow	Black and grey water	2 x 2'700 lt / 2x710 US gals
L.O.A.	42.6 m / 139 ft 9 in	Engines	2 x CATERPILLAR C32-C 1044 Kw @2300rpm
Beam moulded	8.65 m / 28 ft 4 in	Main generators	2 x KOHLER 125 ekW @ 50 Hz
Depth to main deck	4.60 m / 15 ft 1 in	Max speed	15.4 Knots
Draft at full load	2.35 m / 7 ft 8 in	Cruising speed	13 Knots
Draft at full load under propeller	2.70 m / 8 ft 10 in	Range at 11 Kts	3'800 nm
Displacement full load	330 t / 727'500 lbs	Helicopter platform	Suitable for 1'500 Kg helicopter
Guest (cabin)	N° 10 persons (n. 1 owner suite + n. 4 VIP cabins)	Naval architecture	CRN Engineering
Crew (cabin)	N° 9 persons	Interior and exterior design	Zucon International Project
Fuel tank	45'000 lt / 11'800 gallons	Classification	RINA ✕ 100-A-1.1 "Y" MCA compliance
		Stabilization @ anchor	VOSPER VTNM 525





The sea paints charming new panoramas every day. Exploring the enchantment of infinite horizons aboard **O'Lion** is an incomparable pleasure for all lovers of beauty. An exclusive privilege, to experience amidst elegance.



