



SASSA LA MARE

FOR CHARTER





SASSA LA MARE

SASSA LA MARE is an impressive 33.8-metre tri-deck charter yacht, defined by her boholuxe award-winning interiors. Cantiere Delle Marche built her in Ancona, Italy in 2019.

OVERVIEW

Take advantage of the Nordic track SE7i Cross Trainer and selection of weights. Alternatively, you could get out on the water and partake in an all-encompassing activity. Use the water skis or the seabobs provided onboard and release your inner child. Crashing around on one of the inflatable towables is a giggle.

GUEST CAPACITY

SASSA LA MARE accommodates 8-10 guests in 5 staterooms and two deluxe Pullman beds. The main salon is devoted to lounging and sits adjacent to the open large club space sundeck, ideal for canapes and cocktails outside on balmy evenings. The floating staircase with an encased glass balustrade is a crowning architectural element of the boat, leading guests to the upper deck.

SPECIFICATIONS

33.85M | CANTIERE DELLE MARCHE | 2019

 LENGTH 33.85m BEAM 7.57m NO. OF GUESTS 8-10 MAX SPEED 12kts GUEST SUITES 5 RANGE 5,500 nm

INTERIOR

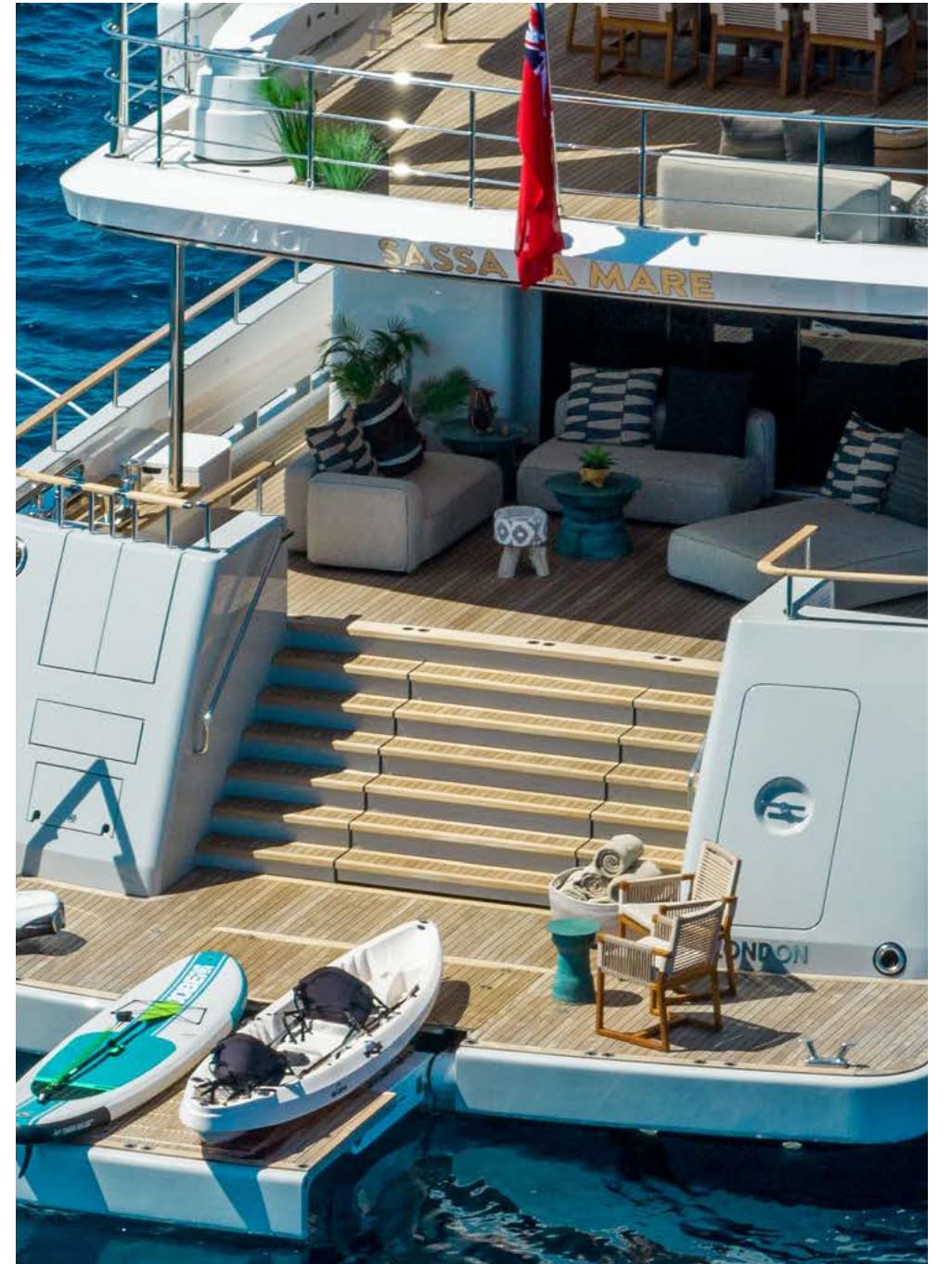
She was awarded the 2019 Boat International Design and Innovation Award. The interiors are characterised by an elegant use of curved lines, luxurious fabrics and organic shapes in muted tones. The luxury beach house-style grace of superyacht interiors is now homogenous with the ocean. Reclaimed materials are scattered around all three decks, reinforcing the yacht's intrinsic relationship with the natural elements. SASSA LA MARE is an interior design lover's haven.

DECK EQUIPMENT

Located aft on the sundeck, the illuminated glass-walled hot tub is elevated three floors high and has the best panoramic views of the entire yacht. The outside deck is furnished by sunpads and offers plenty of leisure space to unwind and socialise. Adjacent to the sundeck is a relaxed alfresco dining and bar area with a covered roof for protection from the wind.

















































































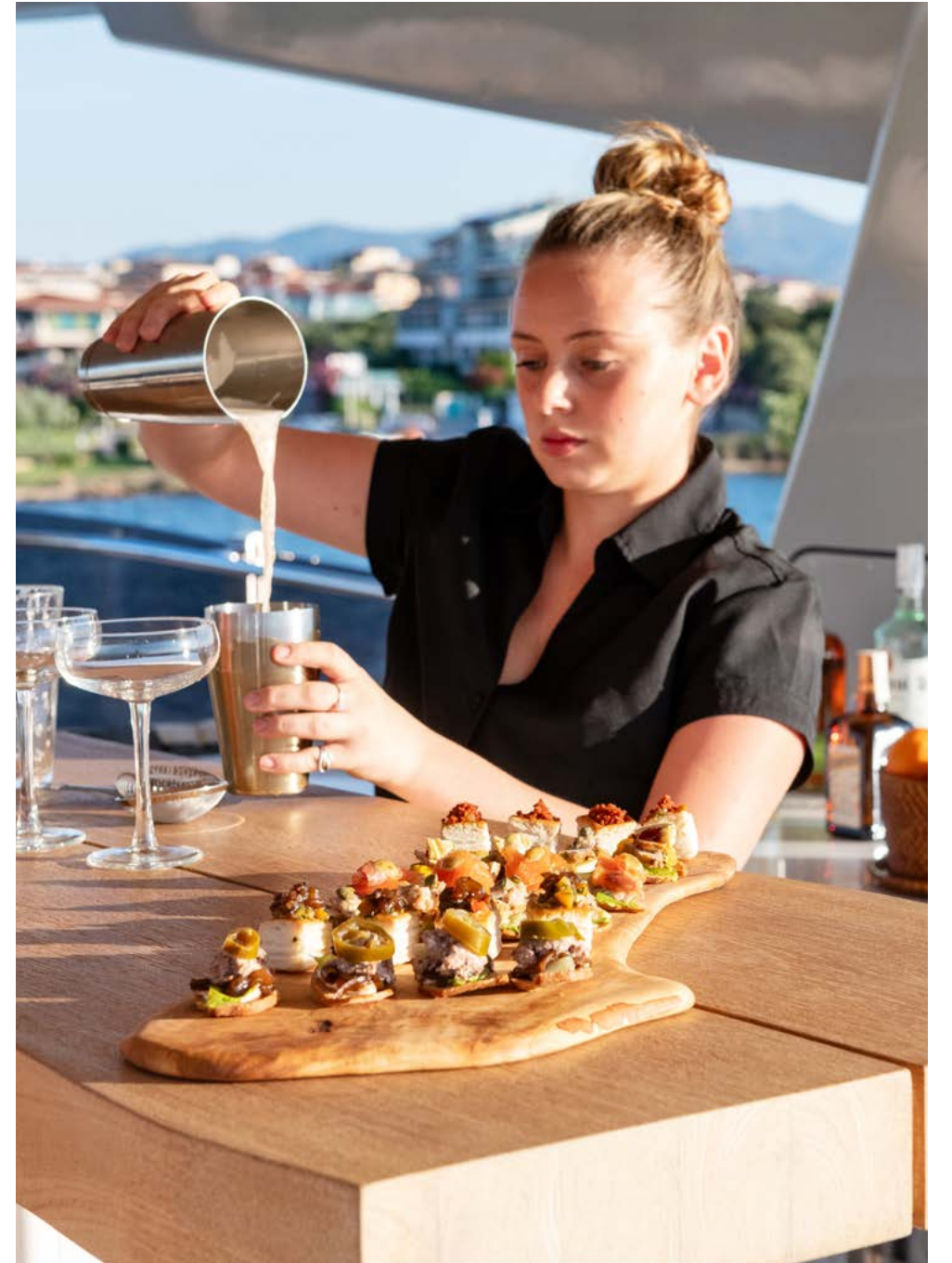
















TOYS & TENDERS

TOYS, EQUIPMENT & ACCESSORIES

- Tender: Extender SRL, EXT645, 6.5m, 2018 with Honda 100 hp. (towed weather permitting when on charter).
- 1 x Jet Ski (Sea-Doo XPS)
- 2 x Seabobs
- 2 x Kayaks
- 2 x Paddle boards
- 1 x Water skis
- Assorted Snorkel equipment
- 3 x e-bikes
- 1x Towable inflatable
- Approved RYA Center offering personal watercraft training.



S P E C I F I C A T I O N S

COMMUNICATIONS EQUIPMENT

- SASSA LA MARE'S internet speeds are all from SIM cards & therefore are governed by the local networks.
- Stream capability is good as long as there is a mobile network signal.
- SASSA LA MARE provides 100GB free and then charge 2.50Euro per GB to the charterer. They have a system onboard that will monitor guest usage of the SIM internet connection.
- This is the only form of internet SASSA LA MARE has there is no VSAT onboard therefore the costs are relatively low. E.G. streaming at medium quality is approximately 1 GB per hour.

AUDIO-VISUAL

- Wifi limited to 3/4G sim cards
- Sonos music system in the main and upper saloon and all deck areas
- Apple TV in all staterooms, main and upper saloon
- Canal & Satellite TV in the master stateroom and main & upper saloon
- Guests able to play music in guest staterooms.

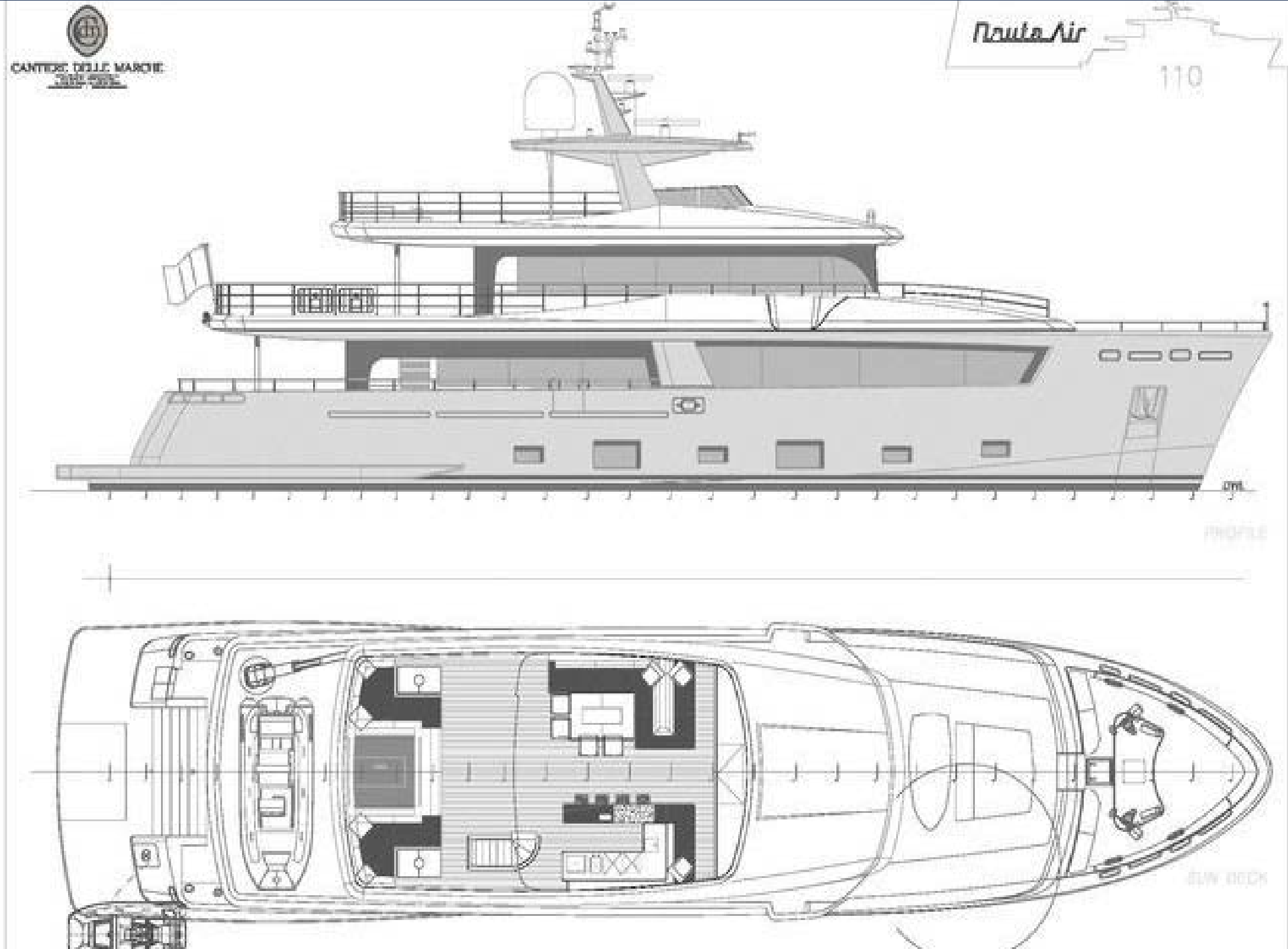
GYM EQUIPMENT

- Nordic track SE7i Cross Trainer and weights
- 4 x Yoga mats
- 1 X 20Kg weight kit
- Pilates Resistant band
- Pilates Ball & Stable base
- Leather skipping rope

MAIN MACHINERY

- 2 x Caterpillar C18 Acerta EPA tier 3 (533kW@1800-2100rpm) C rating
- 2 x 55kW Kohler
- Range of 5500nm calculated at 9knts.
- 170lt p/hr based on cruising speed of 12knts.
- CMC stabilisers for at anchor and underway.
- Fuel consumption: 170 Litres/Hr
- Gross Tons: 295
- Cruising speed: 10 knots
- Range: 5500
- Max Speed: 12 knots





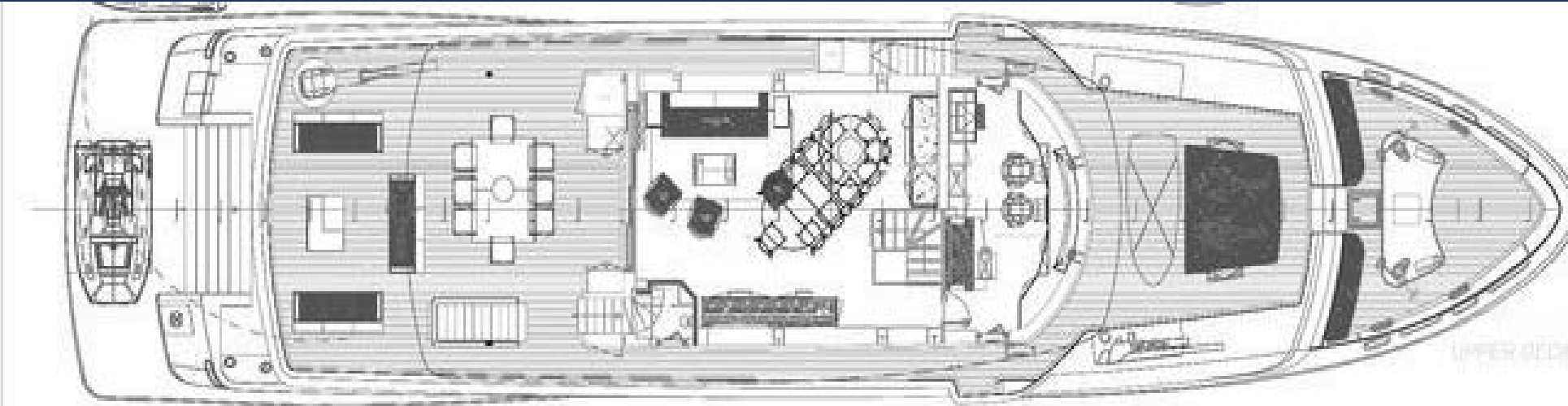
SUNDECK

DISCLAIMER

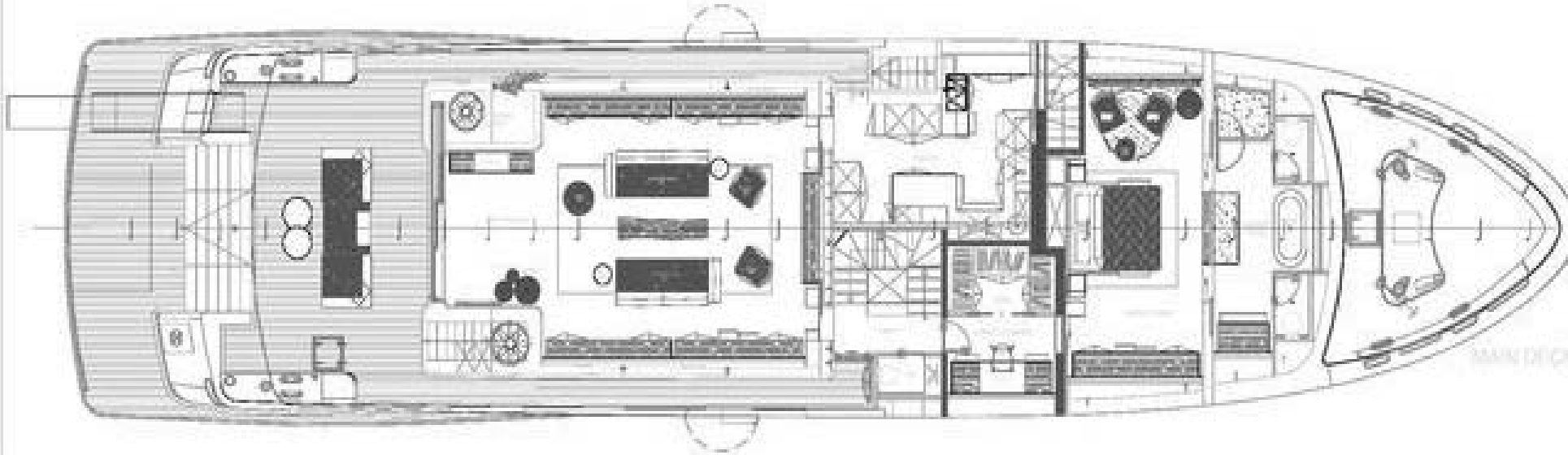
While every effort has been made to ensure that the information contained within this presentation is as up-to-date and accurate as possible at the time of going to press, this cannot be guaranteed. All rights reserved. No part of this publication may be reproduced or used in any form without prior written permission.



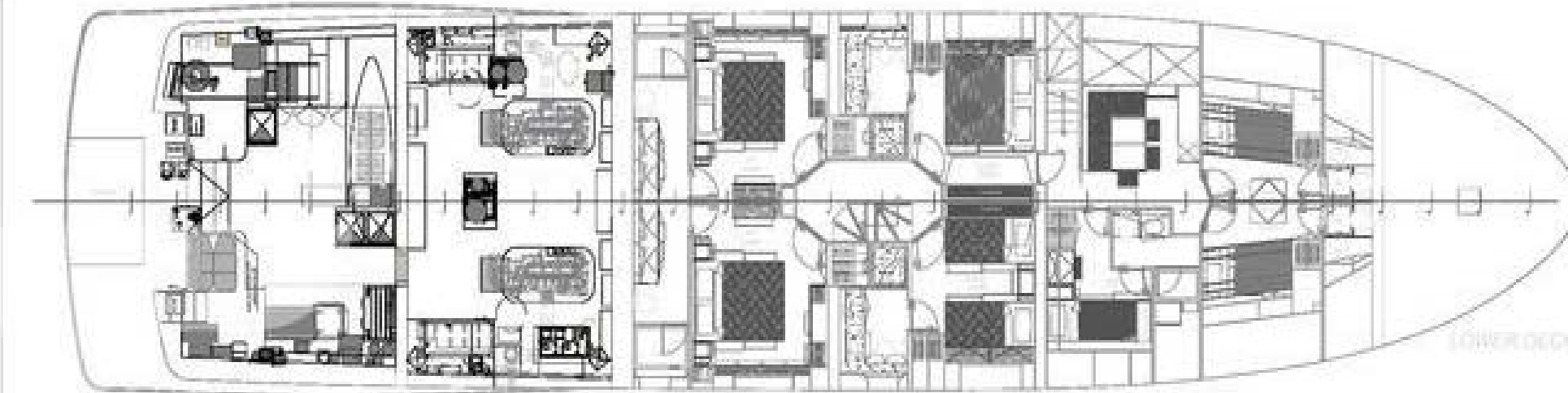
UPPER DECK



MAIN DECK



LOWER DECK



DISCLAIMER

While every effort has been made to ensure that the information contained within this presentation is as up-to-date and accurate as possible at the time of going to press, this cannot be guaranteed. All rights reserved. No part of this publication may be reproduced or used in any form without prior written permission.