



TELEOST

FOR CHARTER



# ELEGANCE & PERFORMANCE

---

TELEOST is one of the most note-worthy superyachts in the industry by virtue of being the premium 50m Feadship on the charter market.

With TELEOST you have an open invitation to enjoy some of the most beautiful places in the world.

Lovingly cared for by her dedicated crew, TELEOST is in impeccable condition and family-friendly with a whole host of exciting features, TELEOST is in high demand on the charter market.

TELEOST has been through a refit in 2023. Built for adventure, TELEOST cruises comfortably at 11 knots and is capable of taking you to the world's most remote regions. She has a firstclass crew of 10 onboard and an endless array of luxury amenities to ensure an unforgettable charter experience.

Styled by UK-based designer John Munford, TELEOST's vast interior is a modern classic. Polished mahogany panelling is paired with silk window panels and chic neutral furnishings to create a luxurious setting to relax and socialise. The large main salon is an elegant and comfortable space to spend time with family and friends. Huge windows overlook your destination and fill the room with natural light. Equipped with a full entertainment system, the salon also has a huge selection of music, games and books for guests to enjoy.

---

FOR CHARTER



---

TELEOST





Spacious and comfortable, TELEOST has accommodation for up to 12 guests in 5 generously sized double staterooms.

Classically elegant, each of the staterooms is equipped with a home entertainment system and opens into a private ensuite bathroom. Her full-beam master suite is located on the main deck and features a private lounge area plus a spa pool for relaxation.

The guest accommodation can be found on the lower deck and is made up of 2 double and 2 twin cabins. TELEOST also has accommodation for her professional and experienced crew of 10 on the lower deck.

With her vast decks plus multiple lounge and dining areas, TELEOST is designed to take outdoor living to the next level. Created by Studio De Voogt, TELEOST's distinct profile and open-plan exterior layout give her a perfectly balanced signature on the water. The aft deck has an outdoor dining area and bar plus built-in seating for after-dinner lounging.

At the stern, TELEOST has a vast custom swim platform with an outside shower and a swim ladder. The perfect launchpad for the extensive collection of water toys.

An adventure yacht at heart, TELEOST has a massive selection of water toys to choose from. Highlights include 2 tenders, wave runners, lift efoils, seabobs, kayaks, SUPs, wakeboards, water skis, windsurfers and inflatables. She also has a custom 5m water slide in addition to the Nitrox system onboard for diving, snorkeling and fishing gear.





S P E C I F I C A T I O N S

49.07M | FEADSHIP | 1998/2023



LENGTH 49.07m



NO. OF GUESTS 12



GUEST CABINS 5



BEAM 8.51m



MAX SPEED 14kts



INTERIOR John Munford

FOR CHARTER

TELEOST



---

# KEY FEATURES

---

49.07M | FEADSHIP | 1998/2023

- Extensive refit during winter 2022/2023
- The most premium 50m Feadship on the charter market
- Family charter yacht
- Massive selection of water toys
- Starlink installed, offering faster internet speeds

---

FOR CHARTER



---

TELEOST



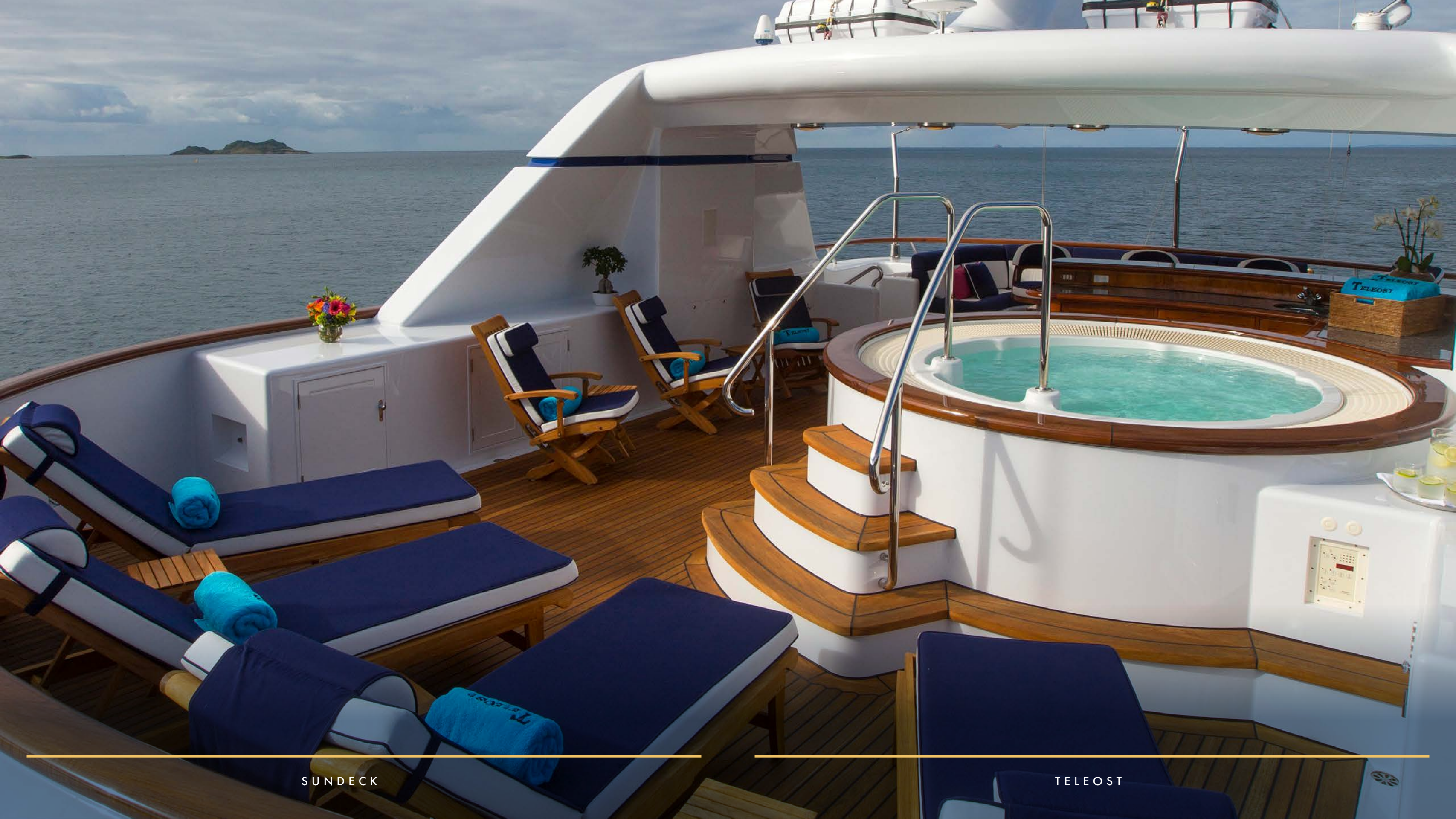


---

FOR CHARTER

TELEOST





SUNDECK

TELEOST





SUNDECK

TELEOST





SUNDECK

TELEOST

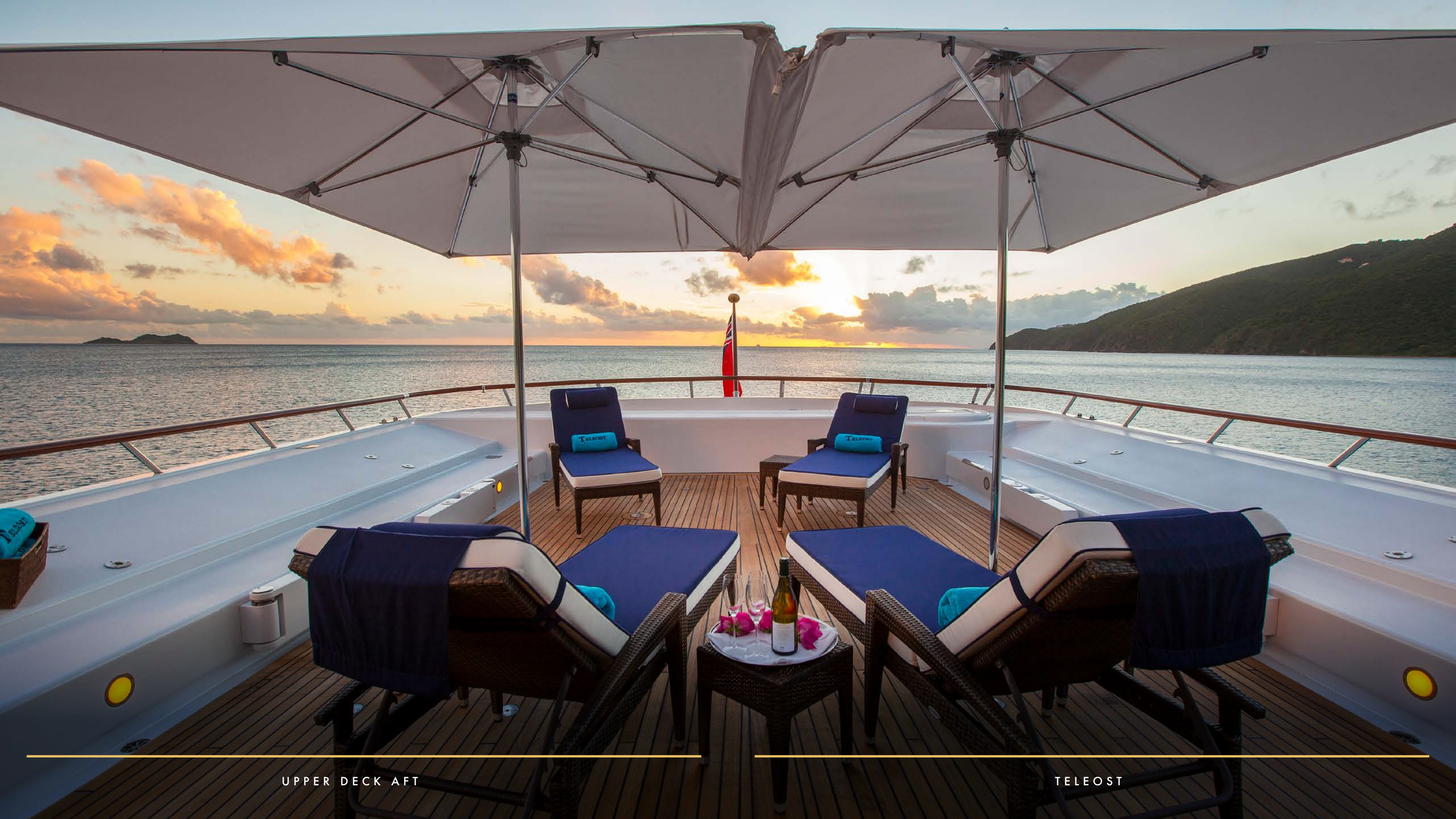




UPPER DECK AFT

TELEOST





UPPER DECK AFT

TELEOST





UPPER DECK SALON

TELEOST





UPPER DECK BAR

TELEOST





BRIDGE

TELEOST





MAIN DECK CONVERTIBLE DINING TABLE

TELEOST





MAIN DECK CONVERTIBLE TABLE

TELEOST





MAIN DECK SALON

TELEOST





MAIN DECK SALON

TELEOST





MAIN DECK DINING TABLE

TELEOST





FOR CHARTER



TELEOST





FOR CHARTER



TELEOST

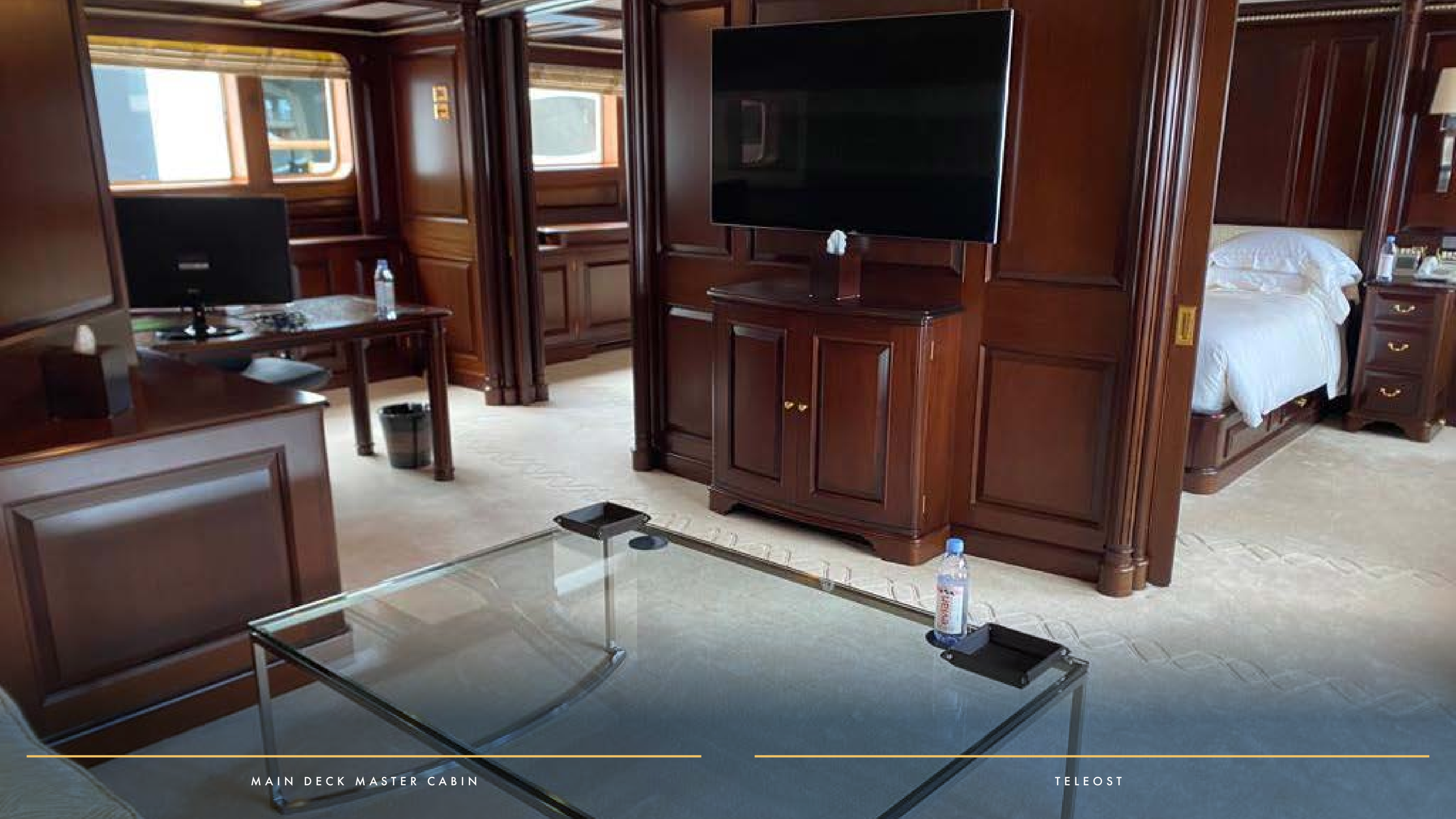




MAIN DECK MASTER CABIN

TELEOST









MAIN DECK MASTER CABIN

TELEOST

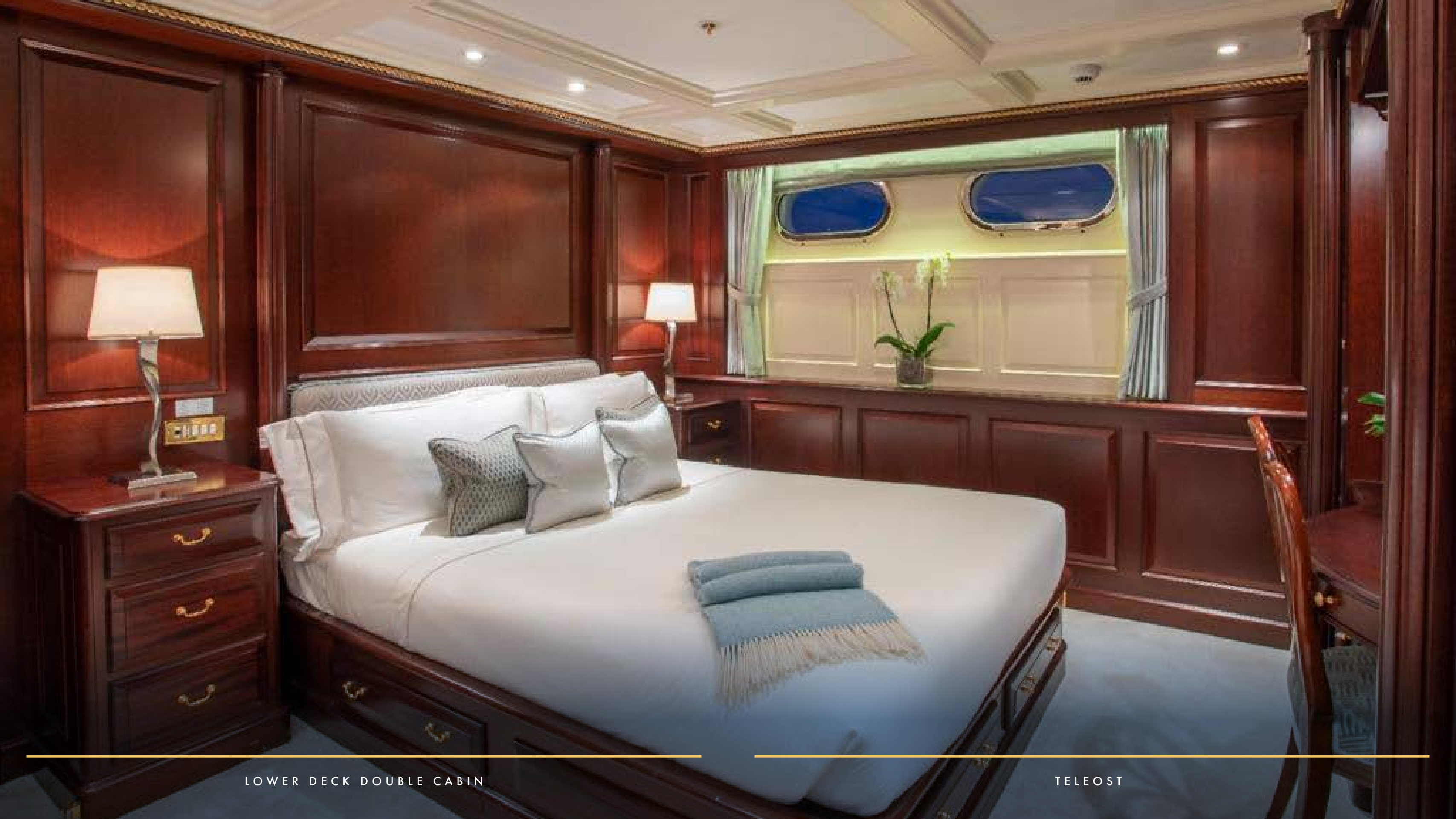




MASTER CABIN BATHROOM

TELEOST

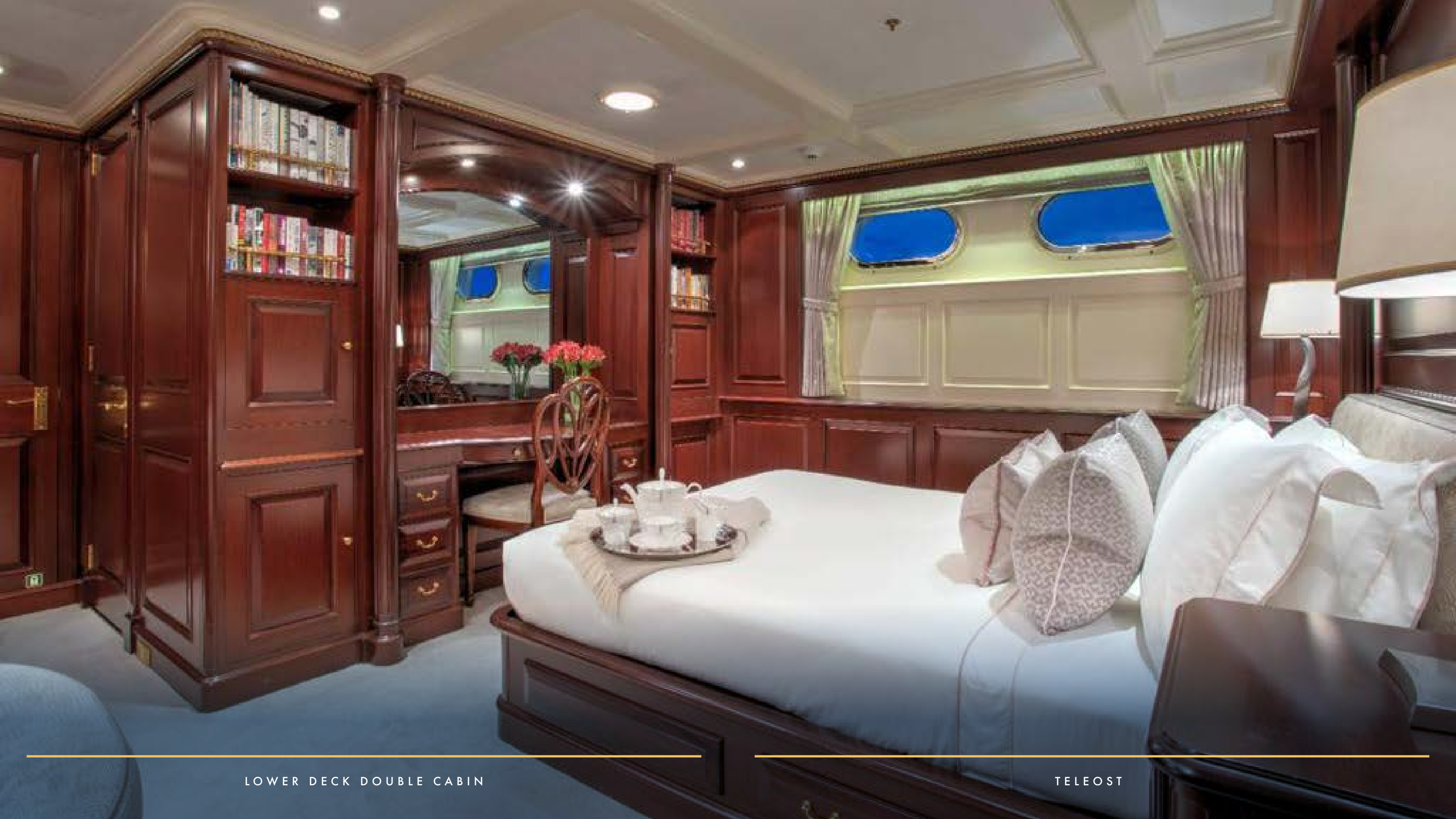




LOWER DECK DOUBLE CABIN

TELEOST





LOWER DECK DOUBLE CABIN

TELEOST





LOWER DECK TWIN CABIN 1

TELEOST









---

FOR CHARTER

---

TELEOST





---

FOR CHARTER

TELEOST



# TENDERS & TOYS

49.07M | FEADSHIP | 1998/2023

## TENDERS

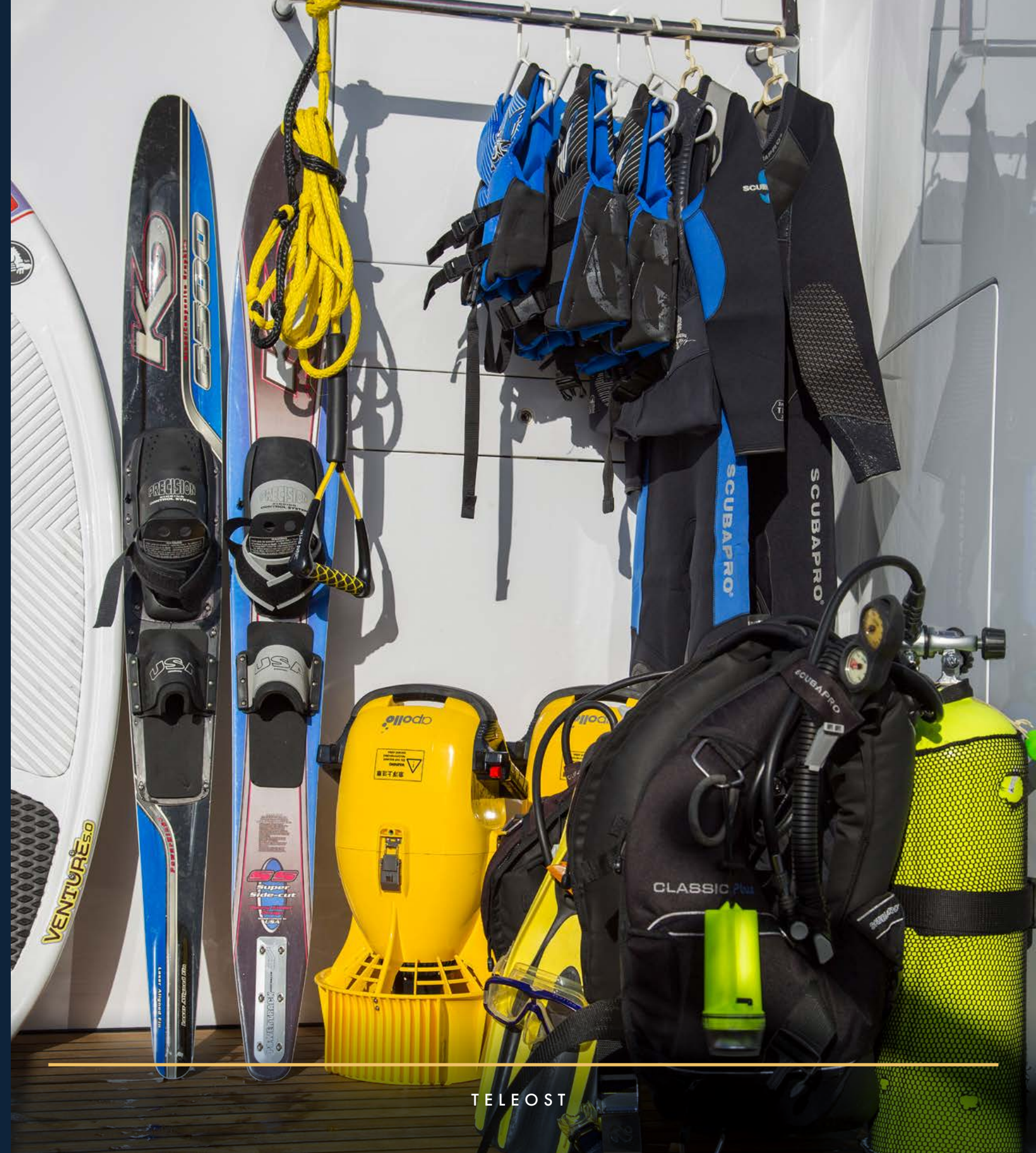
- 2 ft/6.95 m centre console Zodiac Open 7 with Yamaha 250hp outboard engine (a perfect platform for diving, fishing and watersports). Max capacity 16, including crew.
- 20 ft /6.32m Williams 625 Dieseljet RIB with a Yanmar 6BY3 260hp Diesel inboard engine. Max capacity 11, including crew.

## WATER TOYS

- 2 x eFoils (Lift Foils 5'6" boards)
- 2 x 3-man Yamaha waverunners (4 stroke)
- 2 x Seabob F5S
- 2 x Red Paddle Co. Inflatable paddleboards
- 1 x Red Paddle Co. Inflatable Windsurf board (can also be used as paddleboard)
- 1 x Inflatable Paddle Board
- Snorkeling gear
- 4 x wakeboards
- 1 x wake surf board
- 1 x wake skate board
- 3 x pairs waterskis (Large, S/M & children)
- 2 x Individual slalom waterskis
- Assorted inflatable toys (hot dog towable, 2 x donut ring inflatables, 1 x Large Mable couch inflatable)
- Extensive fishing gear
- 2 x single and 2 x double kayaks
- 1 x double pedal / paddle Hobie kayak
- 5m custom waterslide
- Assorted beach toys (pool noodles, bat & ball, volleyball, waterguns etc.)

### Scuba Gear:

- Nitrox system onboard for diving
- 16 x tanks
- 8 x B.C's
- Weight belts
- Wetsuits
- Dive computers
- 2 dive compressors with cascade system for fast tank refills



FOR CHARTER

TELEOST



# S P E C I F I C A T I O N S

49.07M | FEADSHIP | 1998/2023

## AUDIO-VISUAL & DECK EQUIPMENT

- Completely streaming of Blu-Ray & HD DVD Video-on-Demand system and upgraded TV panels in all guest cabins and Skylounge
- Plex Media Server with onboard media library of the latest Movies & TV Shows
- Crestron control system running on Samsung tablets
- High Availability Synology NAS storage system
- Airplay & HDMI Input for streaming personal content
- Plexus Direct TV (US West Coast region) for live TV
- Sonos Audio System in guest cabins and public areas
- Master cabin with SAT TV (American channels)
- Main Salon: Entertainment centre includes CD & Integrated Music System with MP3 input facility. Board games, movie and book libraries.
- Dining Salon: Forward, formal seating for 12. May be enclosed with partitioning door. Forward day head.
- Aft deck: Ample, built-in stern seating with dining for 12. Smoking permitted.

## AUDIO-VISUAL & DECK EQUIPMENT (CTD.)

- Skylounge: SAT TV + Entertainment centre includes DVD, Blu-Ray, VCR, CD, Karaoke and Integrated Music System with MP3 input facility. 75inch 4k LED TV fitted for DVD/Blu-Ray playback with facility for Laptop input (HDMI/Composite Video). Wet bar and day head forward, Dining for 12 with retractable awning.
- Sun Deck: Integrated Music System, Jacuzzi, wet bar with 4 stools, built-in stern seating, awnings, BBQ, 4 x sunbeds and 4 x sun chairs.
- Master cabin and sky lounge with SAT TV (American channels)
- Boarding and water access: Passerelle (stern) boarding and side boarding. Custom swim platform with ladder to water and outside shower; extensive BBQ Grill; day head and shower within adjacent lazarette.

## REFIT/MAINTENANCE

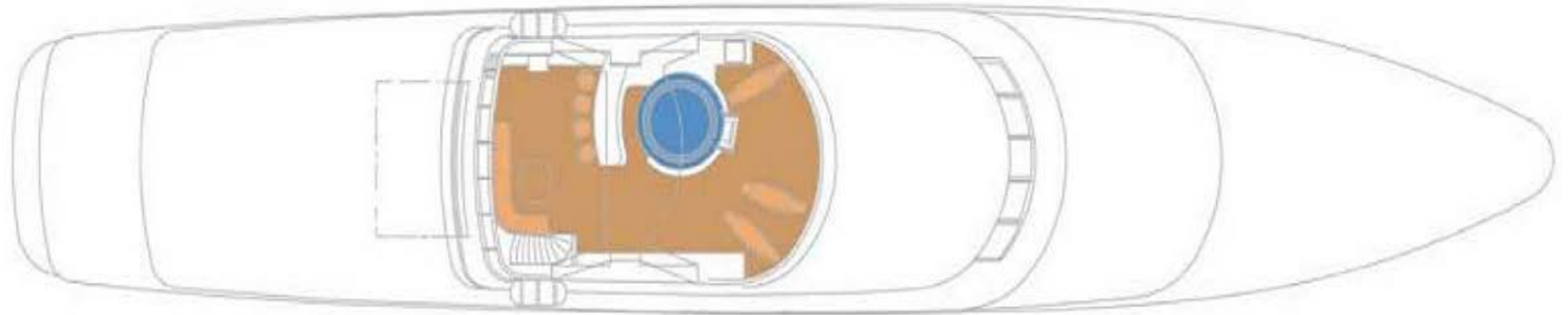
- Winter 2022 – 2023: Complete exterior paint system, full exterior varnish refinishing, all new exterior deckheads and custom LED exterior lighting system with updated control system, new exterior soft furnishings, extensive interior woodwork refinishing throughout guest areas to original specifications, new interior deckheads and blinds where required in guest areas, updated on demand audio-visual system and onboard computer network, tenders updated with new cushions and furnishings along with extensive refinishing, two new 2023 Yamaha Waverunners (3-person), new inflatable water slide and updated water toys, new generators that meet the latest low emission standards, new electrical system including shore power convertor, new sewage system to meet the latest standards.
- Winter 2017 – 2018: Mechanical, Full Exterior Cosmetic Paint, New Air Conditioning system, new water-makers and new Jacuzzi. Full re-paint. Interior woodwork repairs and refinishing. Sat-Com upgrades (Kymeta flat panel satellite antennas installed, a new V-Sat antenna installed) upgraded 4G connections. Exterior soft furnishings re-covered.
- Winter 2012-2013: Mechanical, Full Exterior Cosmetic Paint, Interior Facelift (Every existing soft furnishings, carpets, headliner, drapes, curtains, furniture is being replaced, including lights and minor changes to wood trim).
- Winter 2007-08 refit: full re-paint, new fabrics in the cabins
- 2002 Refit including a full paint job.



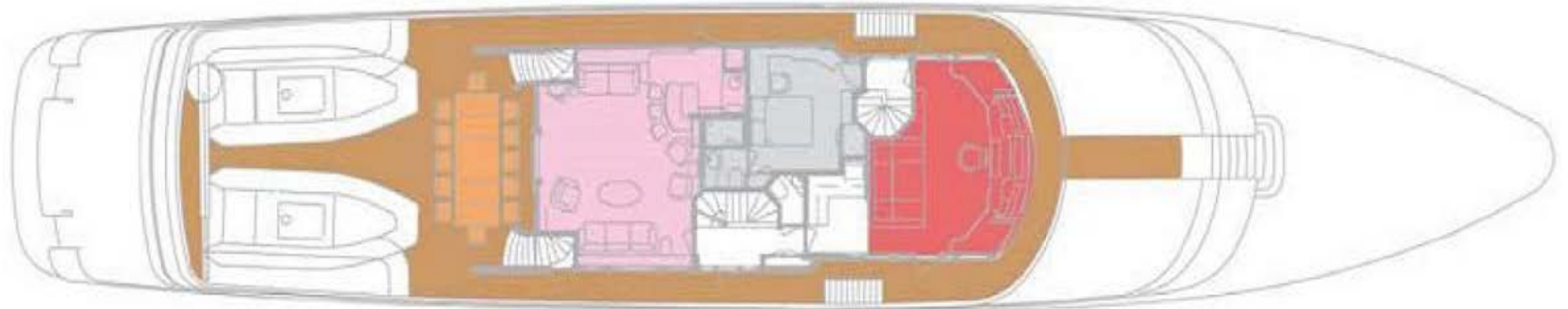
# GENERAL ARRANGEMENT

49.07M | FEADSHIP | 1998/2023

SUNDECK



UPPER DECK



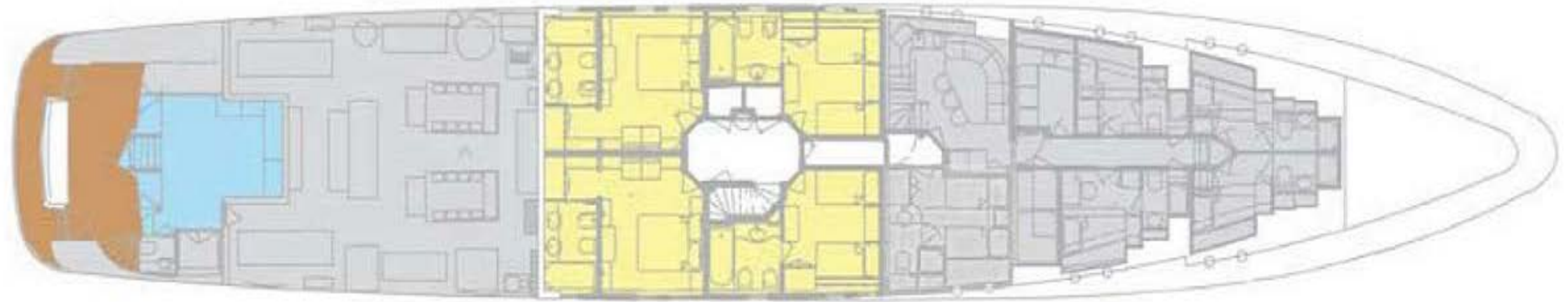
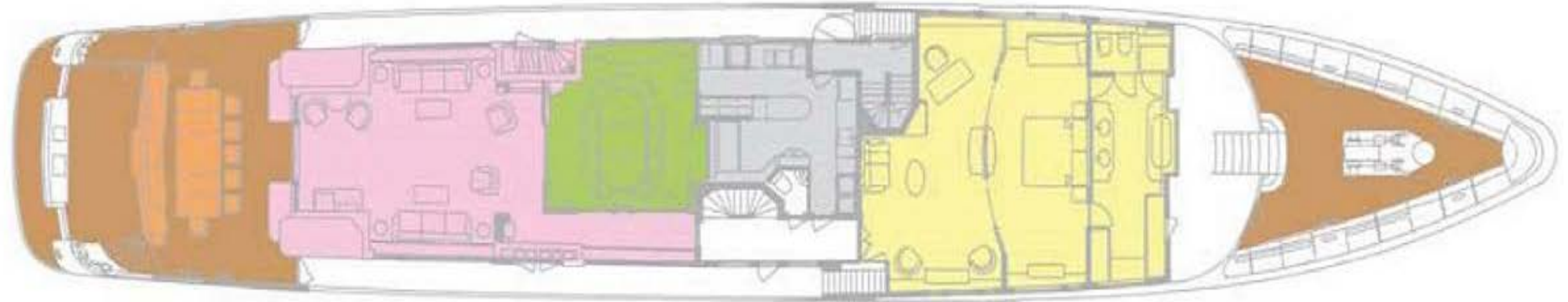
## DISCLAIMER

While every effort has been made to ensure that the information contained within this presentation is as up-to-date and accurate as possible at the time of going to press, this cannot be guaranteed. All rights reserved. No part of this publication may be reproduced or used in any form without prior written permission.



# GENERAL ARRANGEMENT

49.07M | FEADSHIP | 1998/2023



## DISCLAIMER

While every effort has been made to ensure that the information contained within this presentation is as up-to-date and accurate as possible at the time of going to press, this cannot be guaranteed. All rights reserved. No part of this publication may be reproduced or used in any form without prior written permission.