



## HEMISPHERE

Yacht Charter Details for 'Hemisphere', the 44.2m Superyacht built by Pendennis

### SPECIFICATIONS

LENGTH  
44.2m / 145'

BEAM                      DRAFT  
16.6m / 54'6            2.8m / 9'2

YEAR                      REFIT  
2011                      2023

CRUISING SPEED  
11 Knots

### ACCOMMODATION

GUESTS      CABINS      CREW  
**12      5      10**

CABIN CONFIGURATION  
2 VIP                      2 Double  
1 Twin

### CHARTER RATES

SUMMER  
from  
\$260,000 / week + expenses

WINTER  
from  
\$260,000 / week + expenses

Details correct as of 19 Sep, 2024

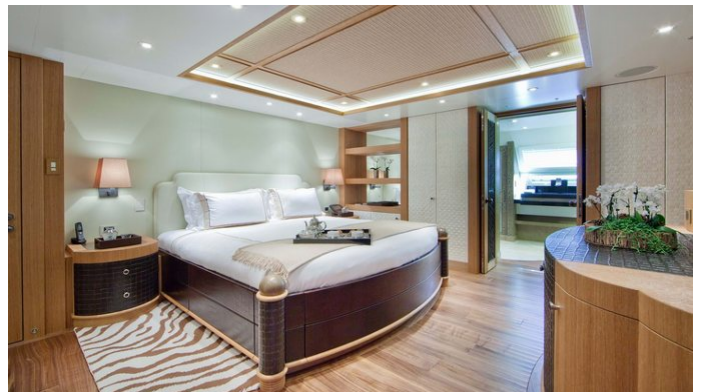
FOR MORE INFORMATION:

[CLICK HERE](#) 

or SCAN QR CODE







MORE PHOTOS, VIDEO OR INTERACTIVE DECK PLANS:



[CLICK HERE](#)

## HEMISPHERE YACHT CHARTER

Superyacht HEMISPHERE was built in 2011 by Pendennis. She is a 44.2m / 145' Custom sail yacht with exterior design by Van Peteghem Lauriot Prévost (VPLP) and interior styling by Michael Leach . Hemisphere offers accommodation for up to 12 guests in 5 cabins with additional room for her crew of 10. She features a variety of amenities to ensure comfortable charter vacations, including, Air Conditioning, WiFi connection on board & Deck Jacuzzi. She also carries an impressive collection of toys as listed below.

## HEMISPHERE AMENITIES & TOYS



Jacuzzi



Wi-Fi



Ipod Docking



Satcom



Deck Jacuzzi



Air Conditioning



Satellite TV

For a full up-to-date list of leisure facilities or amenities onboard Sail Yacht Hemisphere please contact your Yacht Charter Broker prior to booking your vacation. If there is a particular water toy that you would like, but it is not listed, then it may be possible to rent this equipment for you.

MORE TENDERS, TOYS & YACHT AMMENITIES INFO:



[CLICK HERE](#)

## CHARTER HEMISPHERE

If you are interested in chartering HEMISPHERE please contact your yacht charter broker for more information about booking a luxury charter vacation on board this Pendennis superyacht .