



LADY ROSE

Yacht Charter Details for 'Lady Rose', the 45m Superyacht built by Hitachi Zosen

SPECIFICATIONS

LENGTH
45m / 147'8

BEAM DRAFT
8.94m / 29'4 2.92m / 9'7

YEAR REFIT
1986 2008

CRUISING SPEED
13 Knots

ACCOMMODATION

GUESTS	CABINS	CREW
12	7	9

CABIN CONFIGURATION

CHARTER RATES

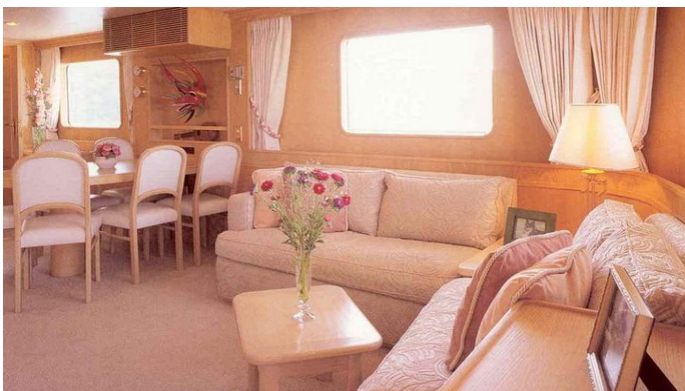
Details correct as of 20 Sep, 2024

FOR MORE INFORMATION:

[CLICK HERE](#) 

or SCAN QR CODE





MORE PHOTOS, VIDEO OR INTERACTIVE DECK PLANS:

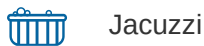


[CLICK HERE](#)

LADY ROSE YACHT CHARTER

Superyacht LADY ROSE was built in 1986 by Hitachi Zosen. She is a 45m / 147'8 Custom motor yacht with exterior design by Jack Hargrave and interior styling by Larvor . Lady Rose offers accommodation for up to 12 guests in 7 cabins with additional room for her crew of 9. She features a variety of amenities to ensure comfortable charter vacations, including, Air Conditioning, WiFi connection on board, Deck Jacuzzi & Gym/exercise equipment. She also carries an impressive collection of toys as listed below.

LADY ROSE AMENITIES & TOYS



Jacuzzi



Wi-Fi



Deck Jacuzzi



Gym



Air Conditioning

For a full up-to-date list of leisure facilities or amenities onboard Motor Yacht Lady Rose please contact your Yacht Charter Broker prior to booking your vacation. If there is a particular water toy that you would like, but it is not listed, then it may be possible to rent this equipment for you.

MORE TENDERS, TOYS & YACHT AMMENITIES INFO:



[CLICK HERE](#)

CHARTER LADY ROSE

If you are interested in chartering LADY ROSE please contact your yacht charter broker for more information about booking a luxury charter vacation on board this Hitachi Zosen superyacht .