



## MATA MUA

Yacht Charter Details for 'Mata Mua', the 38.5m Superyacht built by Scheepswerf Friesland

### SPECIFICATIONS

LENGTH  
38.5m / 126'4

BEAM  
8.1m / 26'7

DRAFT  
3.6m / 11'10

YEAR  
1993

REFIT  
2017

CRUISING SPEED  
10 Knots

### ACCOMMODATION

GUESTS  
**9**

CABINS  
**4**

CREW  
**6**

#### CABIN CONFIGURATION

1 Master            1 VIP  
1 Double           1 Twin  
1 Pullman

### CHARTER RATES

SUMMER  
from  
€68,000 / week + expenses

WINTER  
from  
€68,000 / week + expenses

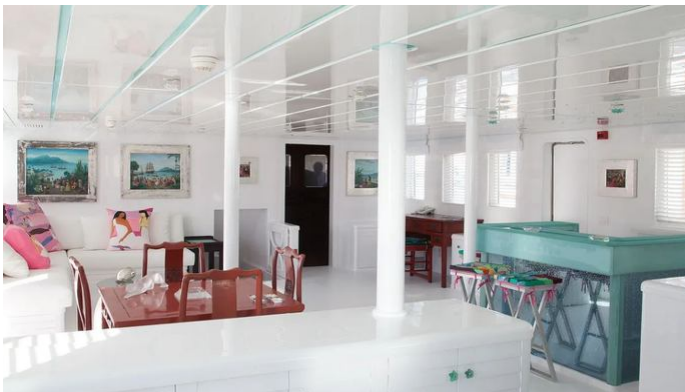
Details correct as of 20 Sep, 2024

FOR MORE INFORMATION:

[CLICK HERE](#) 

or SCAN QR CODE





MORE PHOTOS, VIDEO OR INTERACTIVE DECK PLANS:



[CLICK HERE](#)

## MATA MUA YACHT CHARTER

Superyacht MATA MUA was built in 1993 by Scheepswerf Friesland. She is a 38.5m / 126'4 sail yacht with exterior design by Diana Yacht Design and interior styling by Lemmer . Mata Mua offers accommodation for up to 9 guests in 4 cabins with additional room for her crew of 6. She features a variety of amenities to ensure comfortable charter vacations, including Air Conditioning. She also carries an impressive collection of toys as listed below.

---

## MATA MUA AMENITIES & TOYS



### Air Conditioning

For a full up-to-date list of leisure facilities or amenities onboard Sail Yacht Mata Mua please contact your Yacht Charter Broker prior to booking your vacation. If there is a particular water toy that you would like, but it is not listed, then it may be possible to rent this equipment for you.

MORE TENDERS, TOYS & YACHT AMMENITIES INFO:



[CLICK HERE](#)

---

## CHARTER MATA MUA

If you are interested in chartering MATA MUA please contact your yacht charter broker for more information about booking a luxury charter vacation on board this Scheepswerf Friesland superyacht .