



## SEVEN S

Yacht Charter Details for 'Seven S', the 40.5m Superyacht built by Mondo Marine

### SPECIFICATIONS

LENGTH  
40.5m / 132'10

BEAM                      DRAFT  
8.5m / 27'11            2.15m / 7'1

YEAR                      REFIT  
2010                      2014

CRUISING SPEED  
14 Knots

### ACCOMMODATION

GUESTS      CABINS      CREW  
**10      5      8**

#### CABIN CONFIGURATION

1 Master                      3 Double  
1 Twin                          1 Pullman

### CHARTER RATES

SUMMER  
from  
€130,000 / week + expenses

WINTER  
from  
€130,000 / week + expenses

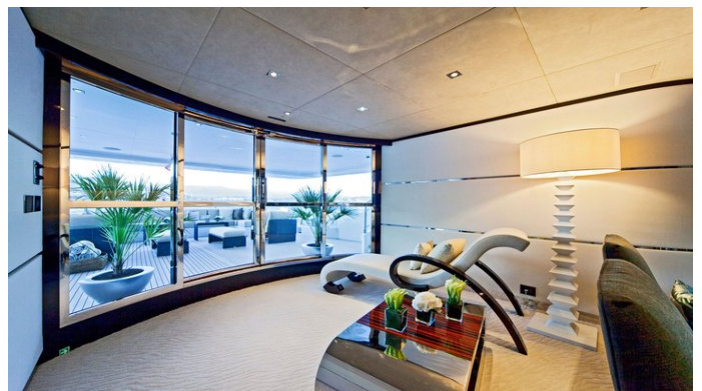
Details correct as of 19 Sep, 2024

FOR MORE INFORMATION:

[CLICK HERE](#) 

or SCAN QR CODE





MORE PHOTOS, VIDEO OR INTERACTIVE DECK PLANS:



[CLICK HERE](#)

## SEVEN S YACHT CHARTER

Superyacht SEVEN S was built in 2010 by Mondo Marine. She is a 40.5m / 132'10 motor yacht with exterior design by Cor D. Rover Design and interior styling by LUCA DINI Design & Architecture . Seven S offers accommodation for up to 10 guests in 5 cabins with additional room for her crew of 8. She features a variety of amenities to ensure comfortable charter vacations, including, Air Conditioning, WiFi connection on board, Deck Jacuzzi & Stabilizers at Anchor. She also carries an impressive collection of toys as listed below.

## SEVEN S AMENITIES & TOYS



Jacuzzi



Wi-Fi



At-Anchor Stabilizers



Deck Jacuzzi



Movie Theatre



Gym



Air Conditioning

For a full up-to-date list of leisure facilities or amenities onboard Motor Yacht Seven S please contact your Yacht Charter Broker prior to booking your vacation. If there is a particular water toy that you would like, but it is not listed, then it may be possible to rent this equipment for you.

MORE TENDERS, TOYS & YACHT AMMENITIES INFO:



[CLICK HERE](#)

## CHARTER SEVEN S

If you are interested in chartering SEVEN S please contact your yacht charter broker for more information about booking a luxury charter vacation on board this Mondo Marine superyacht .