



## PERTULA

Yacht Charter Details for 'Pertula', the 30.48m Superyacht built by Sanlorenzo

### SPECIFICATIONS

LENGTH  
30.48m / 100'

BEAM  
6.61m / 21'8

DRAFT  
1.22m / 4'

YEAR  
2007

REFIT  
2020

CRUISING SPEED  
22 Knots

### ACCOMMODATION

GUESTS  
**8**

CABINS  
**4**

CREW  
**5**

#### CABIN CONFIGURATION

1 Master  
1 Double

1 VIP  
1 Twin

### CHARTER RATES

SUMMER  
from  
€65,000 / week + expenses

WINTER  
from  
€60,000 / week + expenses

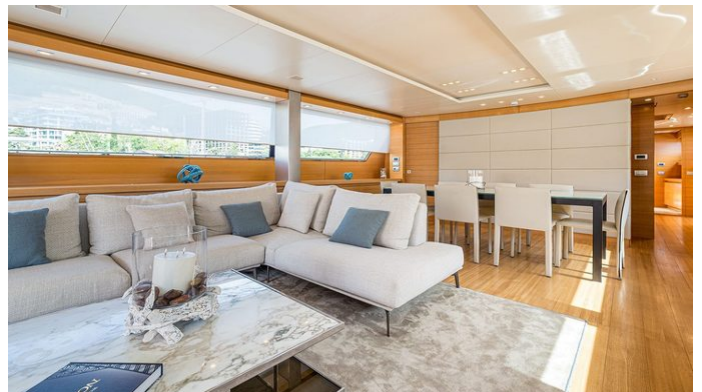
Details correct as of 20 Sep, 2024

FOR MORE INFORMATION:

[CLICK HERE](#) 

or SCAN QR CODE





MORE PHOTOS, VIDEO OR INTERACTIVE DECK PLANS:



[CLICK HERE](#)

## PERTULA YACHT CHARTER

Superyacht PERTULA was built in 2007 by Sanlorenzo. She is a 30.48m / 100' SL100 motor yacht with exterior design by Francesco Paszkowski Design and interior styling by . Pertula offers accommodation for up to 8 guests in 4 cabins with additional room for her crew of 5. She features a variety of amenities to ensure comfortable charter vacations, including, Air Conditioning, WiFi connection on board, Stabilisers underway & Stabilizers at Anchor. She also carries an impressive collection of toys as listed below.

## PERTULA AMENITIES & TOYS



Stabilizers Underway



Underwater Lights



Foredeck Seating With Table



Wi-Fi



Swimming Platform



At-Anchor Stabilizers



Sunpads



Air Conditioning

For a full up-to-date list of leisure facilities or amenities onboard Motor Yacht Pertula please contact your Yacht Charter Broker prior to booking your vacation. If there is a particular water toy that you would like, but it is not listed, then it may be possible to rent this equipment for you.

MORE TENDERS, TOYS & YACHT AMMENITIES INFO:



[CLICK HERE](#)

## CHARTER PERTULA

If you are interested in chartering PERTULA please contact your yacht charter broker for more information about booking a luxury charter vacation on board this Sanlorenzo superyacht .