



DEEP BLUE

Yacht Charter Details for 'Deep Blue', the 54.99m Superyacht built by Amels

SPECIFICATIONS

LENGTH
54.99m / 180'5

BEAM
9m / 29'6

DRAFT
3.35m / 11'

YEAR
2014

REFIT
2024

CRUISING SPEED
13 Knots

ACCOMMODATION

GUESTS	CABINS	CREW
12	6	13

CABIN CONFIGURATION

1 Master	1 VIP
1 Double	1 Twin
1 Double/Twin	

CHARTER RATES

SUMMER
from
€285,000 / week + expenses

WINTER
from
€285,000 / week + expenses

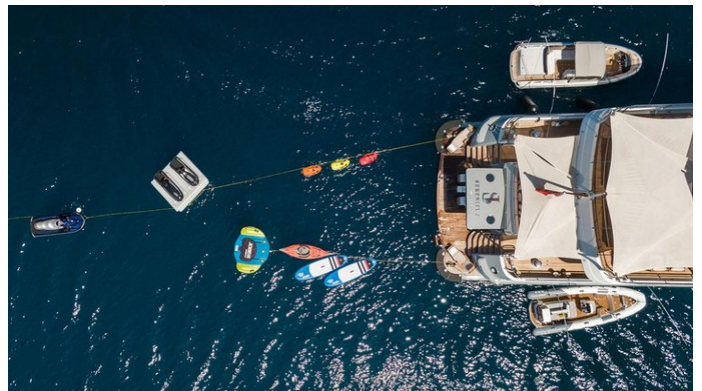
Details correct as of 20 Sep, 2024

FOR MORE INFORMATION:

[CLICK HERE](#) 

or SCAN QR CODE





MORE PHOTOS, VIDEO OR INTERACTIVE DECK PLANS:



[CLICK HERE](#)

DEEP BLUE YACHT CHARTER

Superyacht DEEP BLUE was built in 2014 by Amels. She is a 54.99m / 180'5 motor yacht with exterior design by Tim Heywood Design and interior styling by Laura Sessa Romboli . Deep Blue offers accommodation for up to 12 guests in 6 cabins with additional room for her crew of 13. She features a variety of amenities to ensure comfortable charter vacations. She also carries an impressive collection of toys as listed below.

DEEP BLUE AMENITIES & TOYS



Outdoor Gym



Exterior Bar



Underwater Lights



Sun Deck



Foredeck Seating With Table



Outdoor Shower



Wi-Fi



At-Anchor Stabilizers



Hydraulic Swim Platform



Sunpads



Deck Jacuzzi



Beach Club



Air Conditioning



Inflatable Water Slide

For a full up-to-date list of leisure facilities or amenities onboard Motor Yacht Deep Blue please contact your Yacht Charter Broker prior to booking your vacation. If there is a particular water toy that you would like, but it is not listed, then it may be possible to rent this equipment for you.

MORE TENDERS, TOYS & YACHT AMMENITIES INFO:



[CLICK HERE](#)

CHARTER DEEP BLUE

If you are interested in chartering DEEP BLUE please contact your yacht charter broker for more information about booking a luxury charter vacation on board this Amels superyacht .