



JESMA II

Yacht Charter Details for 'Jesma II', the 40m Superyacht built by Tecnomar

SPECIFICATIONS

LENGTH
40m / 131'3

BEAM
8m / 26'3

DRAFT
2.2m / 7'3

YEAR
2017

REFIT

CRUISING SPEED
18 Knots

ACCOMMODATION

GUESTS CABINS CREW

12 5 7

CABIN CONFIGURATION

CHARTER RATES

SUMMER
from
€130,000 / week + expenses

WINTER
from
€130,000 / week + expenses

Details correct as of 10 Nov, 2024

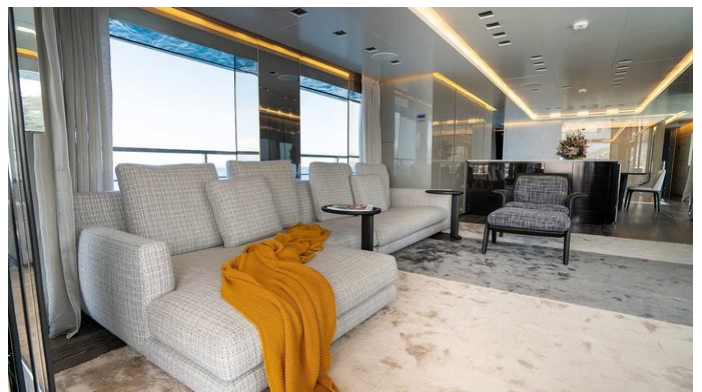
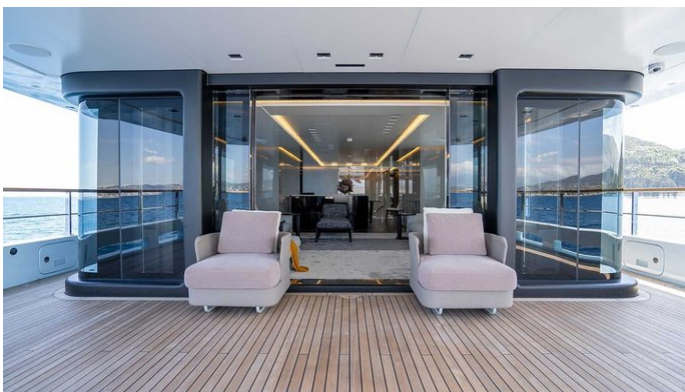
FOR MORE INFORMATION:

[CLICK HERE](#)



or SCAN QR CODE





MORE PHOTOS, VIDEO OR INTERACTIVE DECK PLANS:



[CLICK HERE](#)

JESMA II YACHT CHARTER

Superyacht JESMA II was built in 2017 by Tecnomar. She is a 40m / 131'3 Impero 40 motor yacht with exterior design by LUCA DINI Design & Architecture and interior styling by Gian Marco Companino Design . Jesma II offers accommodation for up to 12 guests in 5 cabins with additional room for her crew of 7. She features a variety of amenities to ensure comfortable charter vacations, including, Crane & Underwater Lights. She also carries an impressive collection of toys as listed below.

JESMA II AMENITIES & TOYS



Underwater Lights



Crane



Wi-Fi



Beach Club



Air Conditioning

For a full up-to-date list of leisure facilities or amenities onboard Motor Yacht Jesma II please contact your Yacht Charter Broker prior to booking your vacation. If there is a particular water toy that you would like, but it is not listed, then it may be possible to rent this equipment for you.

MORE TENDERS, TOYS & YACHT AMMENITIES INFO:



[CLICK HERE](#)

CHARTER JESMA II

If you are interested in chartering JESMA II please contact your yacht charter broker for more information about booking a luxury charter vacation on board this Tecnomar superyacht .