



YachtCharterFleet

THE SMARTEST WAY TO SEARCH



LISA OF THE SEAS

Yacht Charter Details for 'Lisa Of The Seas', the 20.36m Superyacht built by Fountaine Pajot

SPECIFICATIONS

LENGTH
20.36m / 66'10

BEAM DRAFT
9.84m / 32'3 1.7m / 5'7

YEAR REFIT
2020

CRUISING SPEED
6 Knots

ACCOMMODATION

GUESTS	CABINS	CREW
10	5	3

CABIN CONFIGURATION
1 Master 1 VIP
3 Double

CHARTER RATES

SUMMER
from
€38,000 / week + expenses

WINTER
from
\$52,000 / week + expenses

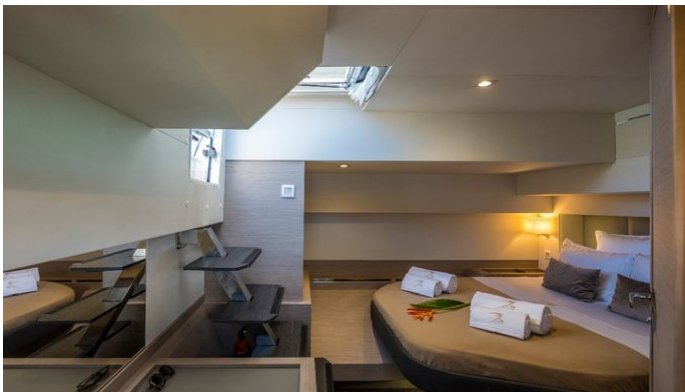
Details correct as of 19 Sep, 2024

FOR MORE INFORMATION:

[CLICK HERE](#) 

or SCAN QR CODE





MORE PHOTOS, VIDEO OR INTERACTIVE DECK PLANS:



[CLICK HERE](#)

LISA OF THE SEAS YACHT CHARTER

Superyacht LISA OF THE SEAS was built in 2020 by Fountaine Pajot. She is a 20.36m / 66'10 motor/sailer yacht with exterior design by . Lisa Of The Seas offers accommodation for up to 10 guests in 5 cabins with additional room for her crew of 3. She features a variety of amenities to ensure comfortable charter vacations. She also carries an impressive collection of toys as listed below.

LISA OF THE SEAS AMENITIES & TOYS



Outdoor Shower



Wi-Fi



Swimming Platform



Sunpads



Deck Jacuzzi



Air Conditioning

For a full up-to-date list of leisure facilities or amenities onboard Motor/Sailer Yacht Lisa Of The Seas please contact your Yacht Charter Broker prior to booking your vacation. If there is a particular water toy that you would like, but it is not listed, then it may be possible to rent this equipment for you.

MORE TENDERS, TOYS & YACHT AMMENITIES INFO:



[CLICK HERE](#)

CHARTER LISA OF THE SEAS

If you are interested in chartering LISA OF THE SEAS please contact your yacht charter broker for more information about booking a luxury charter vacation on board this Fountaine Pajot superyacht .